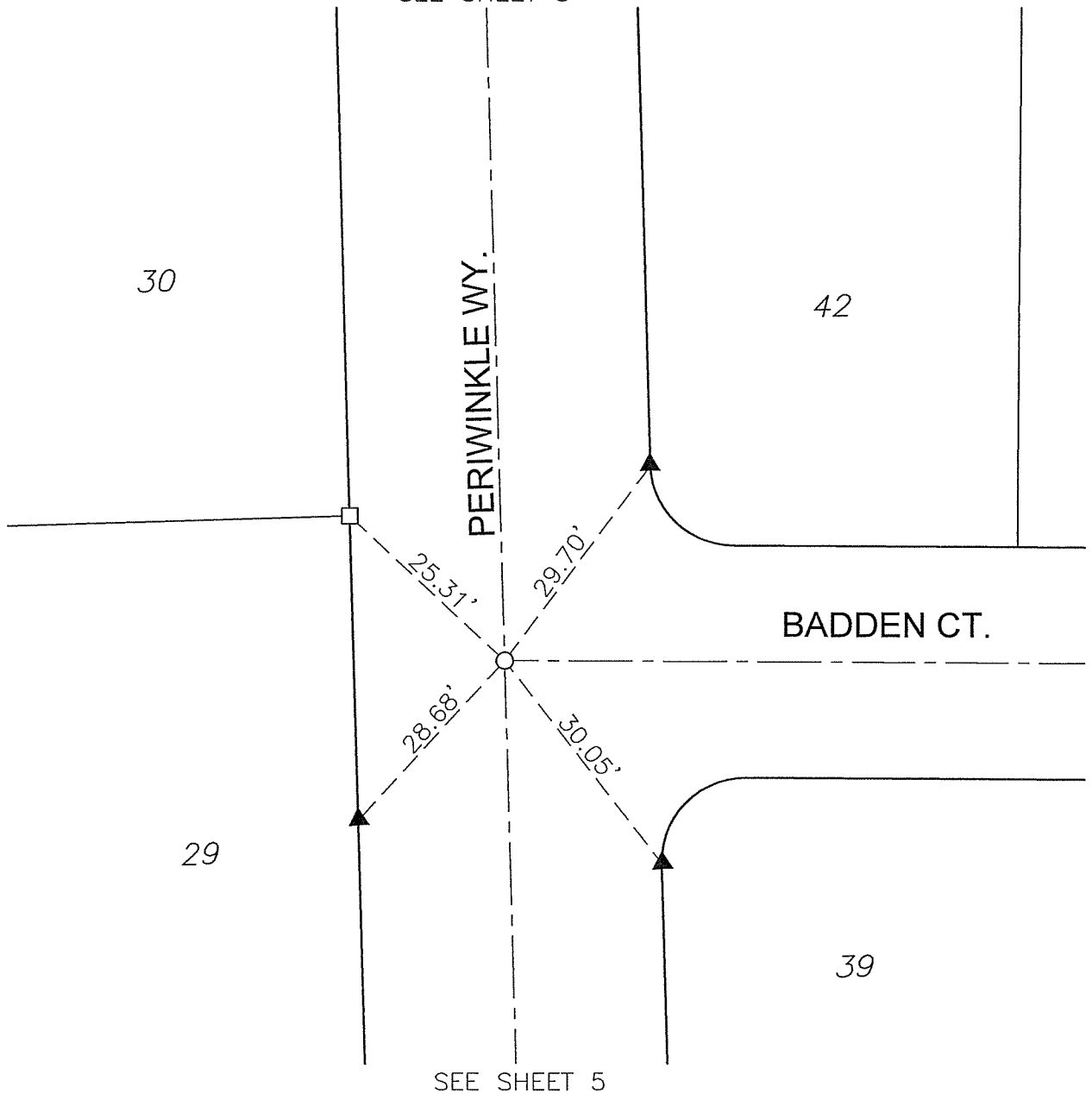


# TR 32772-3

MB 416/62-66

SEE SHEET 3

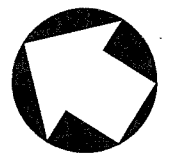
STREET PERIWINKLE WY. X-STREET BADDEN CT. OFFICE USE ONLY



SEE SHEET 8

### SURVEYORS' NOTE

- ▲ - INDICATES SET NAIL IN TC
- - INDICATES SET NAIL AND "LS 5022" TAG FLUSH
- - INDICATES SET 1/2" SPIKE AND "LS 5022" TAG, FLUSH



SCALE: 1" = 20'

DATE: 06-15-11

DR. BY: AAP

4RIV250100

## --- OFFICIAL TIE PLAT --- CITY OF RIVERSIDE

PREPARED BY:

# PSOMAS

2010 Iowa Avenue #101 Riverside, California 92507  
(951) 787-8421 www.psomas.com

SHEET

4

OF 11 SHEETS

13738.117