

# SWING TIES

13946.TIF

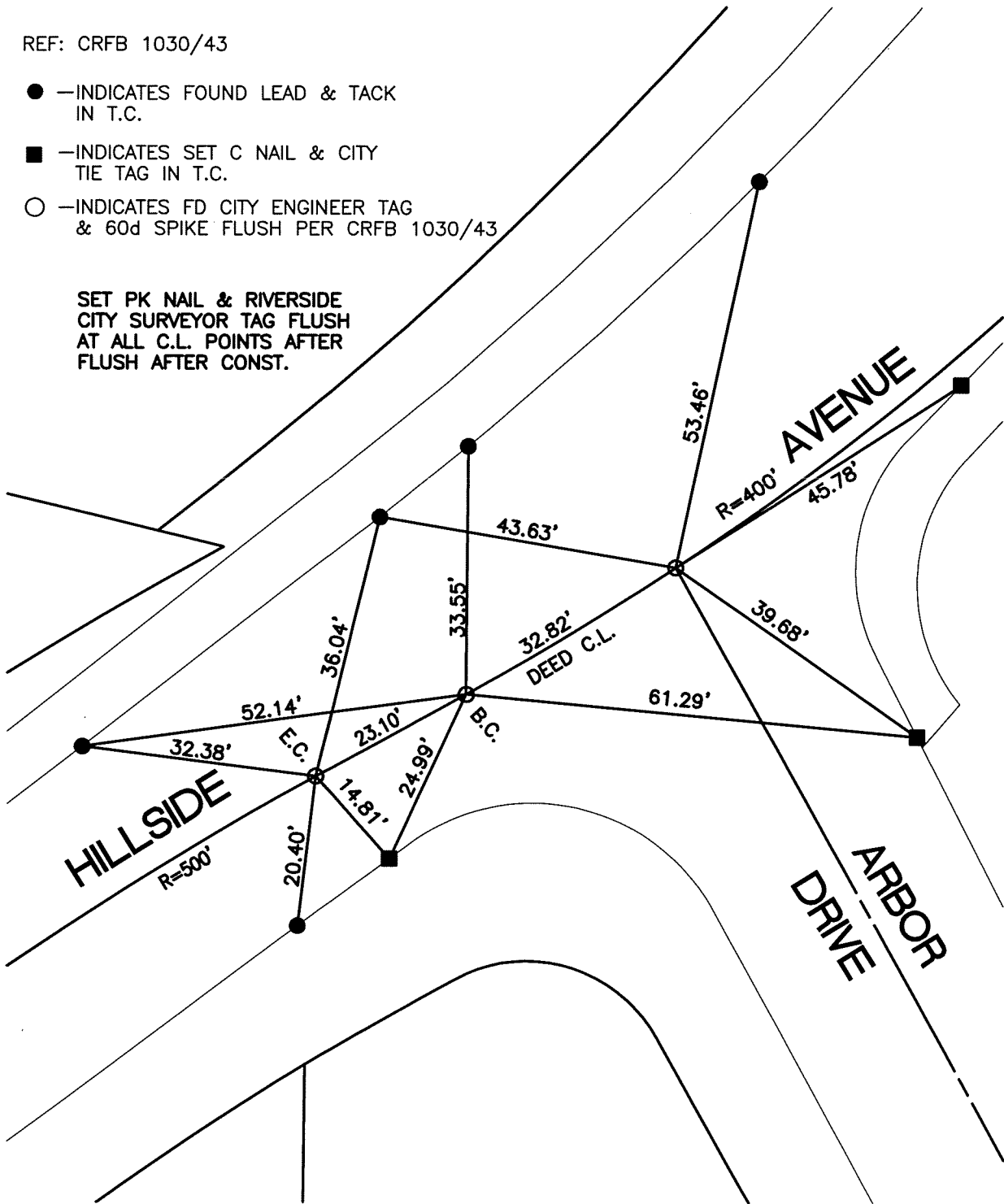
STREET: HILLSIDE AVENUE

X-STREET: ARBOR DRIVE  
OFFICIAL USE ONLY

REF: CRFB 1030/43

- -INDICATES FOUND LEAD & TACK IN T.C.
- -INDICATES SET C NAIL & CITY TIE TAG IN T.C.
- -INDICATES FD CITY ENGINEER TAG & 60d SPIKE FLUSH PER CRFB 1030/43

SET PK NAIL & RIVERSIDE CITY SURVEYOR TAG FLUSH AT ALL C.L. POINTS AFTER FLUSH AFTER CONST.



SCALE: 1"=20'

DATE: 11/17/11

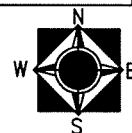
DRAWN BY: CURT

F.B.:

SEC: 32 T.2S.,R.5 W

## OFFICIAL TIE PLAT CITY OF RIVERSIDE

THESE TIES ARE FOR THE PURPOSE OF PERPETUATING THE FOUND MONUMENTATION. NO CLAIM IS MADE AS THE RELATIONSHIP OF THE POINTS OR LINES SHOWN HEREON TO TRUE BOUNDARY LOCATIONS



SHEET 1 OF 1