

SWING TIES

13948.TIF

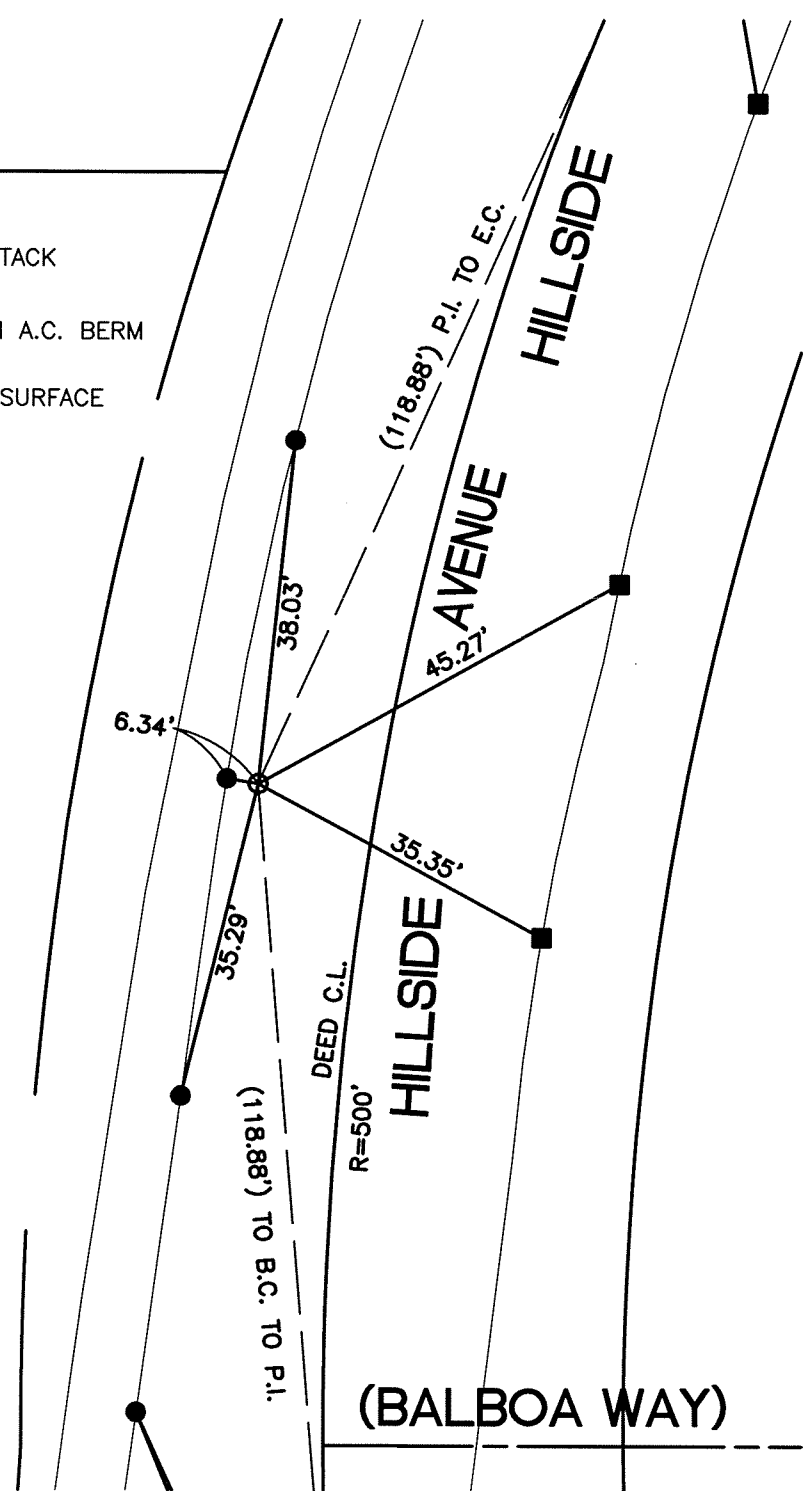
STREET: HILLSIDE AVENUE

X-STREET: P.I. NORTH OF ARBOR DRIVE
OFFICIAL USE ONLY

- REF: CRFB 1030/45
- -INDICATES FOUND LEAD & TACK IN T.C.
 - -INDICATES SET P.K. NAIL IN A.C. BERM
 - -INDICATES FD NOTHING AT SURFACE

SET PK NAIL & RIVERSIDE CITY SURVEYOR TAG FLUSH AFTER CONST.


SET PK NAIL & RIVERSIDE CITY SURVEYOR TAG FLUSH AT ALL C.L. POINTS FLUSH AFTER CONST.



SCALE: 1"=20'
DATE: 11/17/11
DRAWN BY: CURT
F.B.:
SEC: 32 T.2S.,R.5 W

OFFICIAL TIE PLAT
CITY OF RIVERSIDE

THESE TIES ARE FOR THE PURPOSE OF PERPETUATING THE FOUND MONUMENTATION. NO CLAIM IS MADE AS THE RELATIONSHIP OF THE POINTS OR LINES SHOWN HEREON TO TRUE BOUNDARY LOCATIONS



SHEET 1 OF 1