

SWING TIES

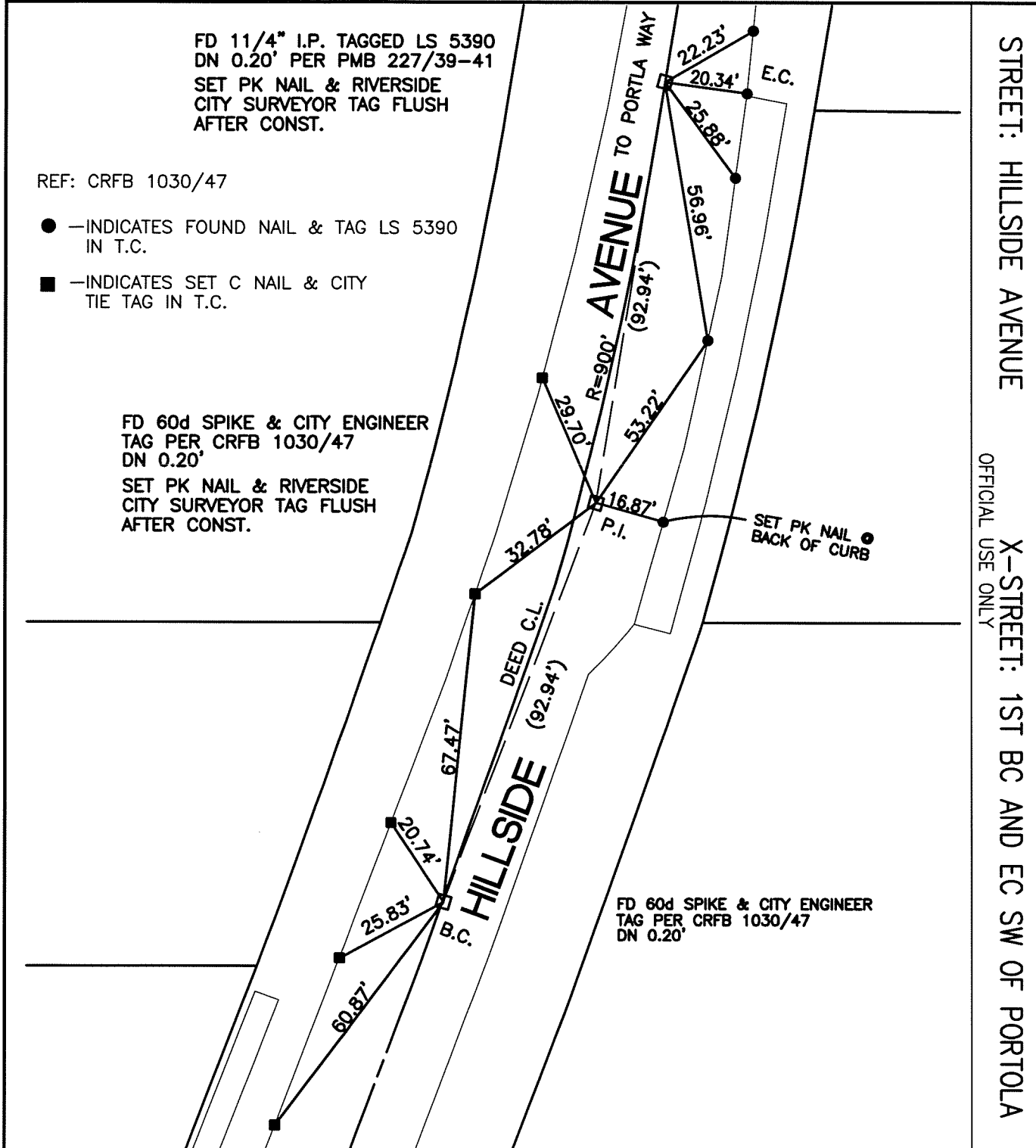
FD 11/4" I.P. TAGGED LS 5390
 DN 0.20' PER PMB 227/39-41
 SET PK NAIL & RIVERSIDE
 CITY SURVEYOR TAG FLUSH
 AFTER CONST.

REF: CRFB 1030/47

- —INDICATES FOUND NAIL & TAG LS 5390
IN T.C.
- —INDICATES SET C NAIL & CITY
TIE TAG IN T.C.

FD 60d SPIKE & CITY ENGINEER
 TAG PER CRFB 1030/47
 DN 0.20'
 SET PK NAIL & RIVERSIDE
 CITY SURVEYOR TAG FLUSH
 AFTER CONST.

FD 60d SPIKE & CITY ENGINEER
 TAG PER CRFB 1030/47
 DN 0.20'



13951.TIF

STREET: HILLSIDE AVENUE

OFFICIAL USE ONLY

X-STREET: 1ST BC AND EC SW OF PORTOLA

SCALE: 1"=30'

DATE: 11/17/11

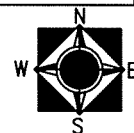
DRAWN BY: CURT

F.B.:

SEC: 32 T.2S.,R.5 W

OFFICIAL TIE PLAT CITY OF RIVERSIDE

THESE TIES ARE FOR THE PURPOSE OF PERPETUATING THE FOUND
 MONUMENTATION. NO CLAIM IS MADE AS THE RELATIONSHIP OF THE
 POINTS OR LINES SHOWN HEREON TO TRUE BOUNDARY LOCATIONS



SHEET 1 OF 1