

SWING TIES

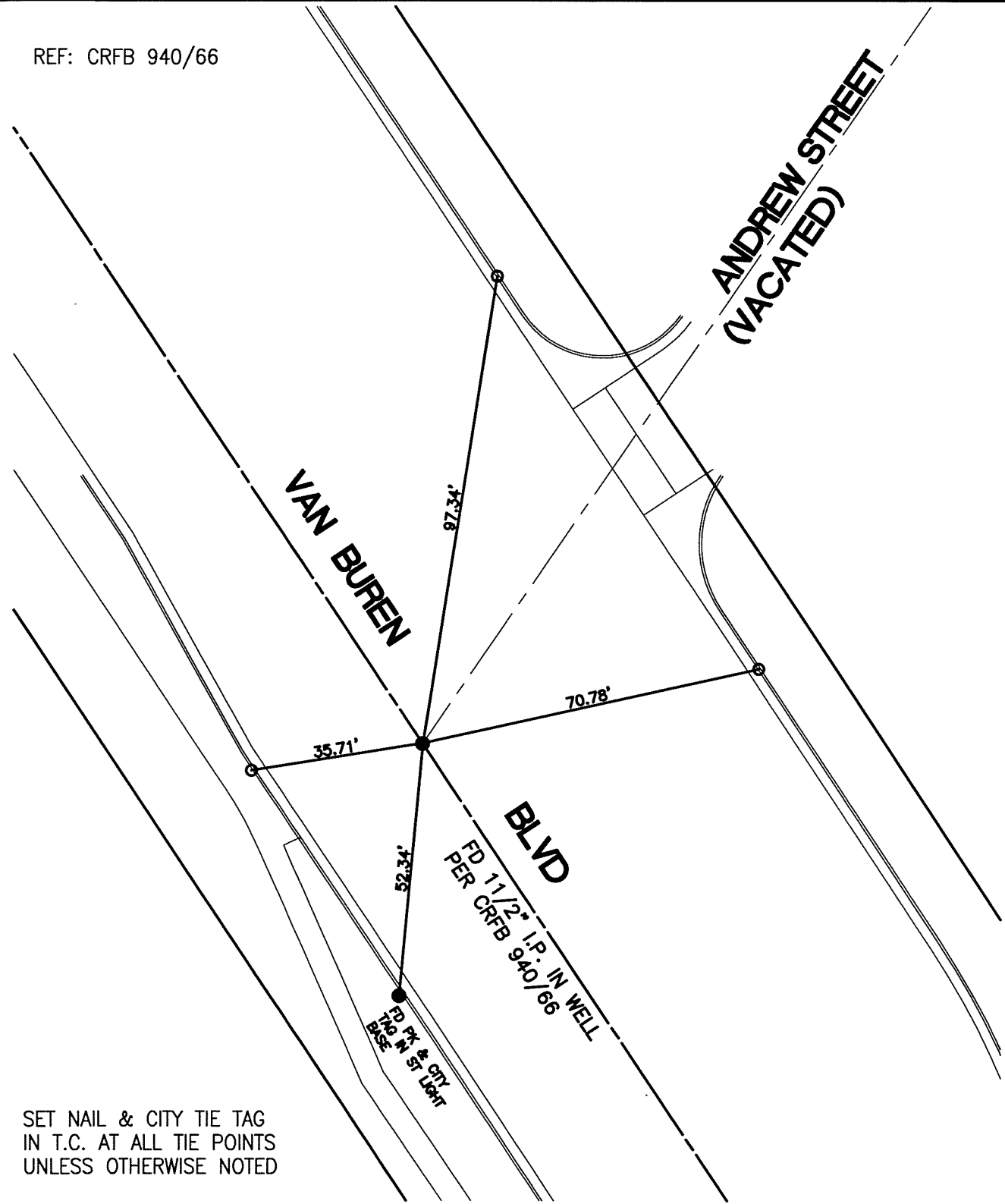
13903.TIF

STREET: VAN BUREN BLVD

OFFICIAL USE ONLY

X-STREET: ANDREW STREET - VACATED

REF: CRFB 940/66



SET NAIL & CITY TIE TAG
IN T.C. AT ALL TIE POINTS
UNLESS OTHERWISE NOTED

SCALE: 1"=30'
DATE: 7/02/12
DRAWN BY: CURT
F.B.:
SEC: 7, T.3S., R.5W

OFFICIAL TIE PLAT CITY OF RIVERSIDE

THESE TIES ARE FOR THE PURPOSE OF PERPETUATING THE FOUND
MONUMENTATION. NO CLAIM IS MADE AS THE RELATIONSHIP OF THE
POINTS OR LINES SHOWN HEREON TO TRUE BOUNDARY LOCATIONS



SHEET 1 OF 1