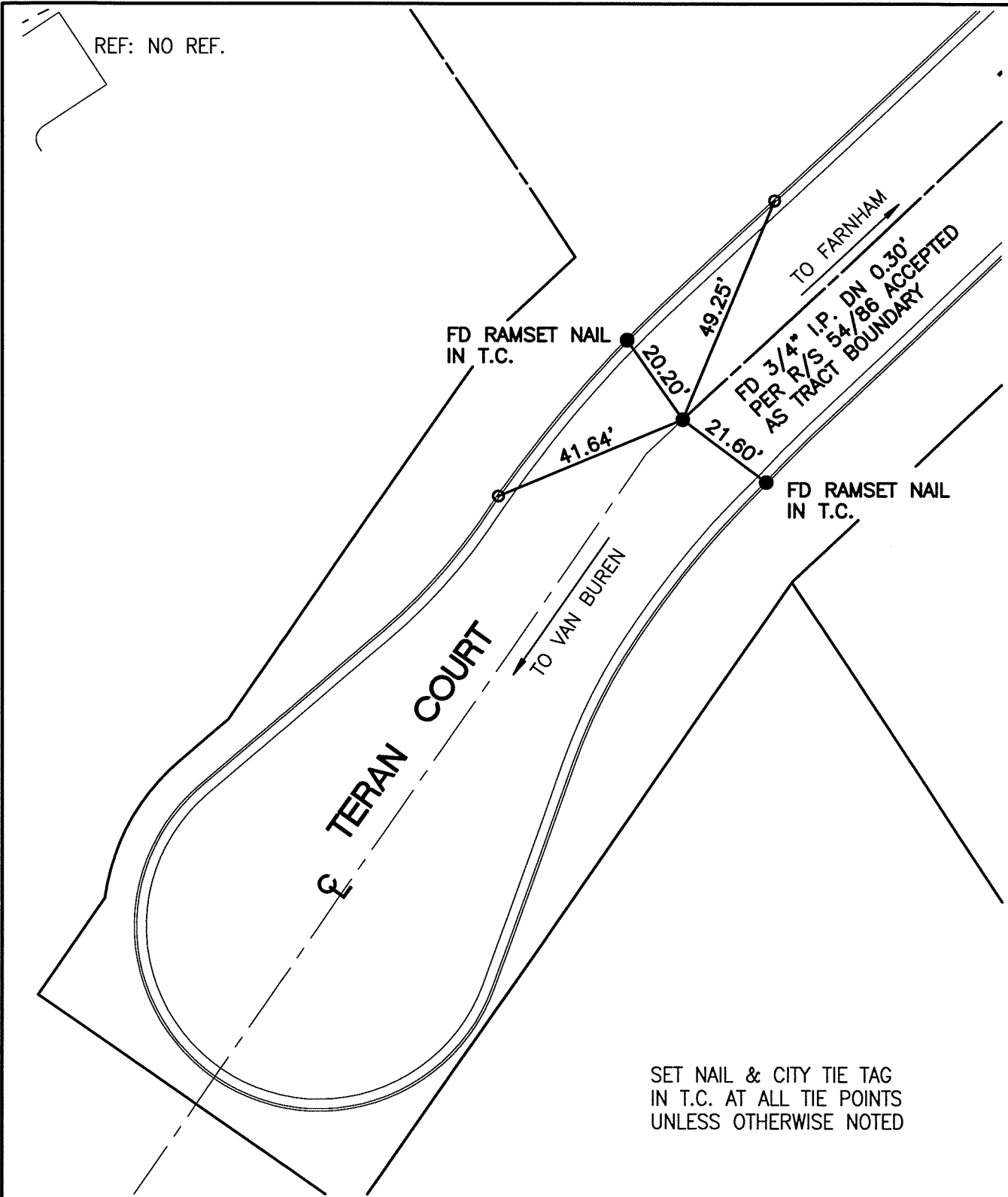


SWING TIES

13984.TIF

STREET: ANDREW STREET(OLD) X-STREET: TR BDY EAST OF VAN BUREN
 OFFICIAL USE ONLY



SET NAIL & CITY TIE TAG
 IN T.C. AT ALL TIE POINTS
 UNLESS OTHERWISE NOTED

SCALE: 1"=30'
DATE: 9/20/07
DRAWN BY: CURT
F.B.:
SEC: 7, T.3S., R.5W

OFFICIAL TIE PLAT
 CITY OF RIVERSIDE

THESE TIES ARE FOR THE PURPOSE OF PERPETUATING THE FOUND MONUMENTATION. NO CLAIM IS MADE AS THE RELATIONSHIP OF THE POINTS OR LINES SHOWN HEREON TO TRUE BOUNDARY LOCATIONS

SHEET 1 OF 1