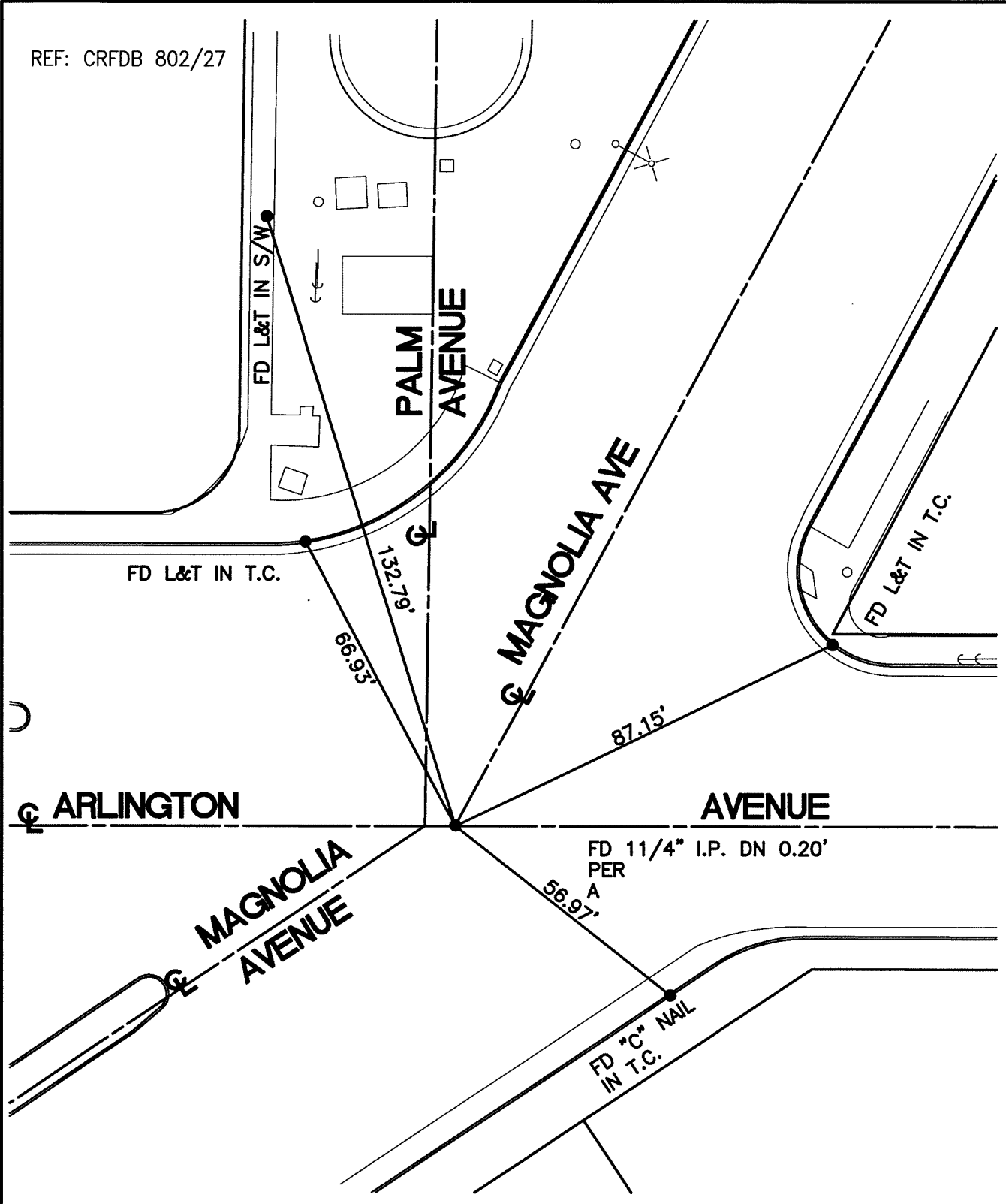


SWING TIES

13986.TIF

REF: CRFDB 802/27



STREET: MAGNOLIA AVENUE

OFFICIAL USE ONLY

X-STREET: ARLINGTON AVENUE

SCALE: 1"=30'
 DATE: 7/02/12
 DRAWN BY: CURT
 F.B.:
 SEC: 33 & 14 T.2S.,R.5W

OFFICIAL TIE PLAT CITY OF RIVERSIDE

THESE TIES ARE FOR THE PURPOSE OF PERPETUATING THE FOUND MONUMENTATION. NO CLAIM IS MADE AS THE RELATIONSHIP OF THE POINTS OR LINES SHOWN HEREON TO TRUE BOUNDARY LOCATIONS



SHEET 1 OF 1