

SWING TIES

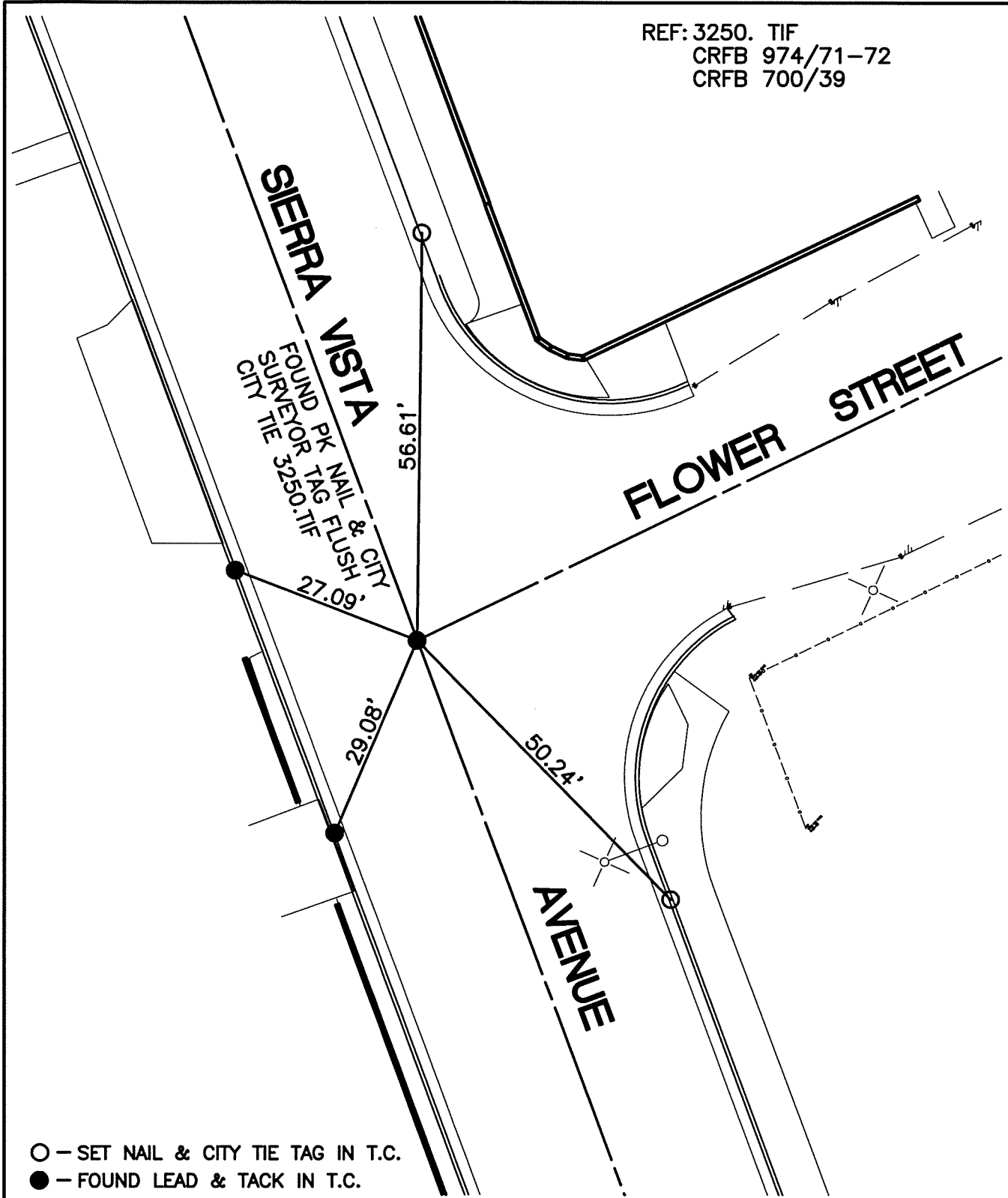
REF: 3250. TIF
 CRFB 974/71-72
 CRFB 700/39

14010.TIF

STREET: SIERRA VISTA AVENUE

OFFICIAL USE ONLY

X-STREET: FLOWER STREET



- - SET NAIL & CITY TIE TAG IN T.C.
- - FOUND LEAD & TACK IN T.C.

SCALE: 1"=20'

DATE: 8/20/12

DRAWN BY: CURT

F.B.:

SEC: 10 T.3S., R.6W

OFFICIAL TIE PLAT CITY OF RIVERSIDE

THESE TIES ARE FOR THE PURPOSE OF PERPETUATING THE FOUND MONUMENTATION. NO CLAIM IS MADE AS THE RELATIONSHIP OF THE POINTS OR LINES SHOWN HEREON TO TRUE BOUNDARY LOCATIONS



SHEET 1 OF 1