

# SWING TIES

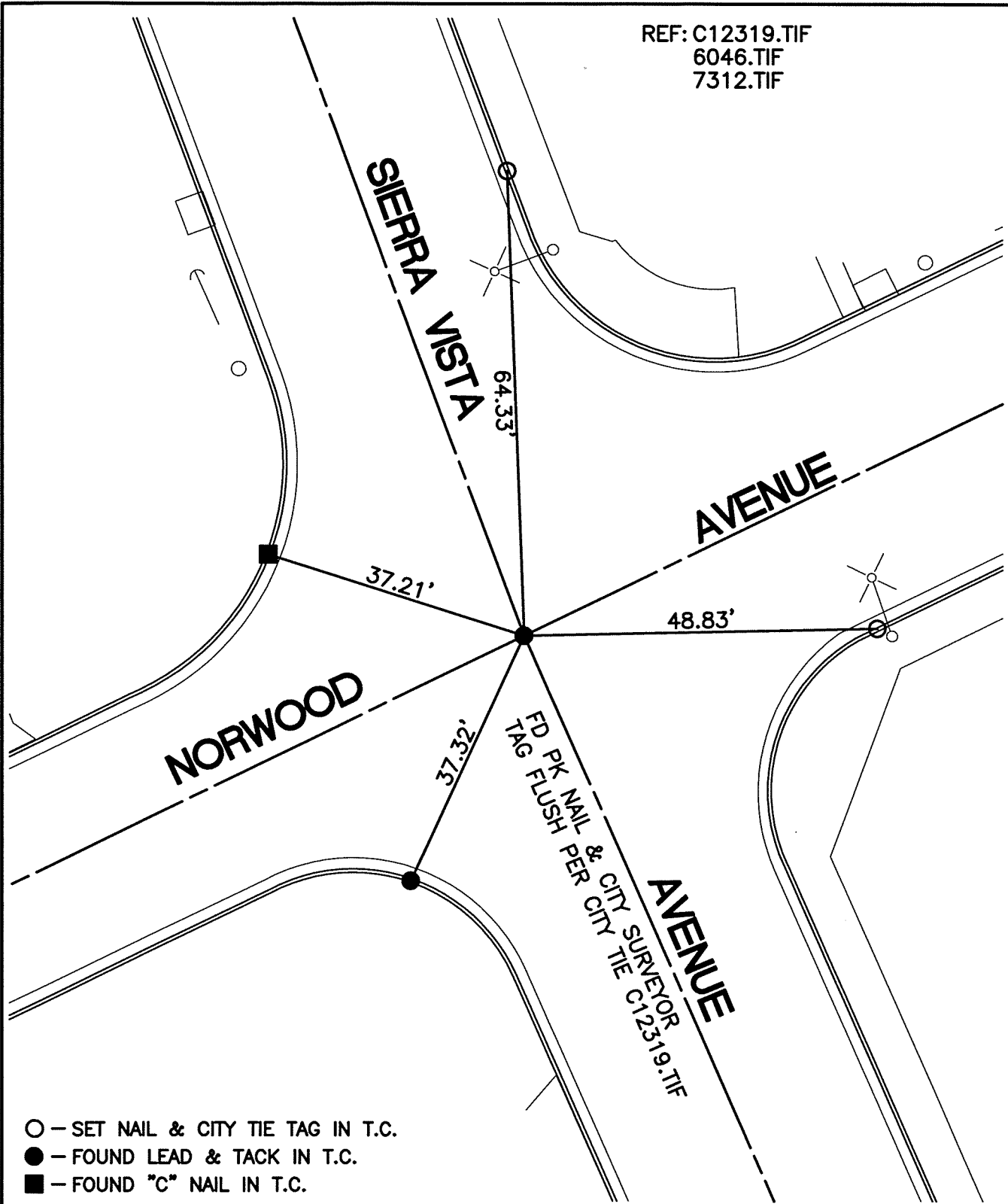
REF: C12319.TIF  
6046.TIF  
7312.TIF

14011.TIF

STREET: SIERRA VISTA AVENUE

OFFICIAL USE ONLY

X-STREET: NORWOOD AVENUE



- - SET NAIL & CITY TIE TAG IN T.C.
- - FOUND LEAD & TACK IN T.C.
- - FOUND "C" NAIL IN T.C.

SCALE: 1"=20'

DATE: 8/20/12

DRAWN BY: CURT

F.B.:

SEC: 10 T.3S., R.6W

## OFFICIAL TIE PLAT CITY OF RIVERSIDE

THESE TIES ARE FOR THE PURPOSE OF PERPETUATING THE FOUND MONUMENTATION. NO CLAIM IS MADE AS THE RELATIONSHIP OF THE POINTS OR LINES SHOWN HEREON TO TRUE BOUNDARY LOCATIONS



SHEET 1 OF 1