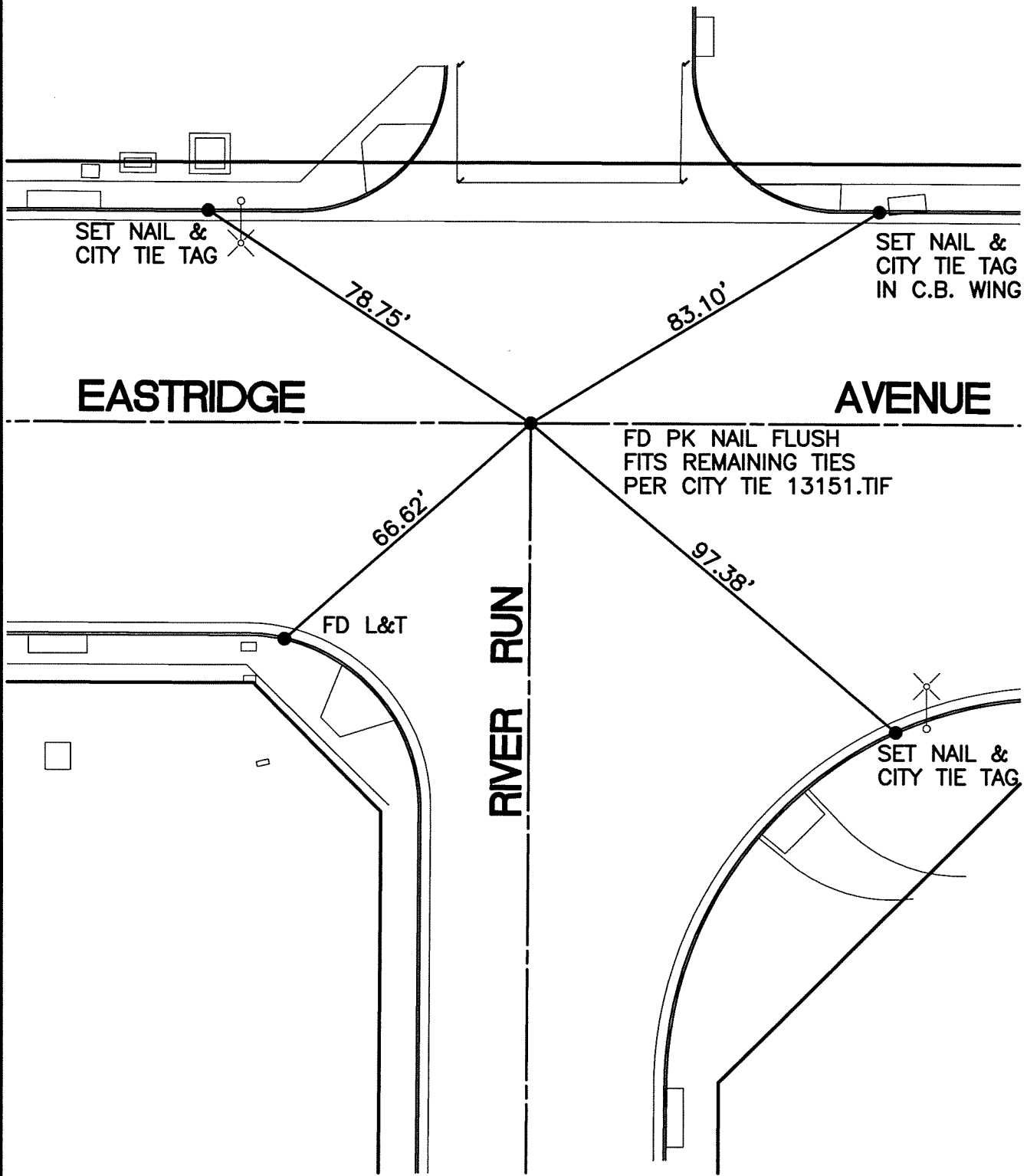


SWING TIES

REF: 13151.TIF

14012.TIF



STREET: EASTRIDGE AVENUE

OFFICIAL USE ONLY

X-STREET: RIVER RUN

SCALE: 1"=30'
DATE: 7/05/12
DRAWN BY: CURT
F.B.:
SEC: 3 & 9 T.3S.,R.4W

OFFICIAL TIE PLAT CITY OF RIVERSIDE

THESE TIES ARE FOR THE PURPOSE OF PERPETUATING THE FOUND MONUMENTATION. NO CLAIM IS MADE AS THE RELATIONSHIP OF THE POINTS OR LINES SHOWN HEREON TO TRUE BOUNDARY LOCATIONS



SHEET 1 OF 1