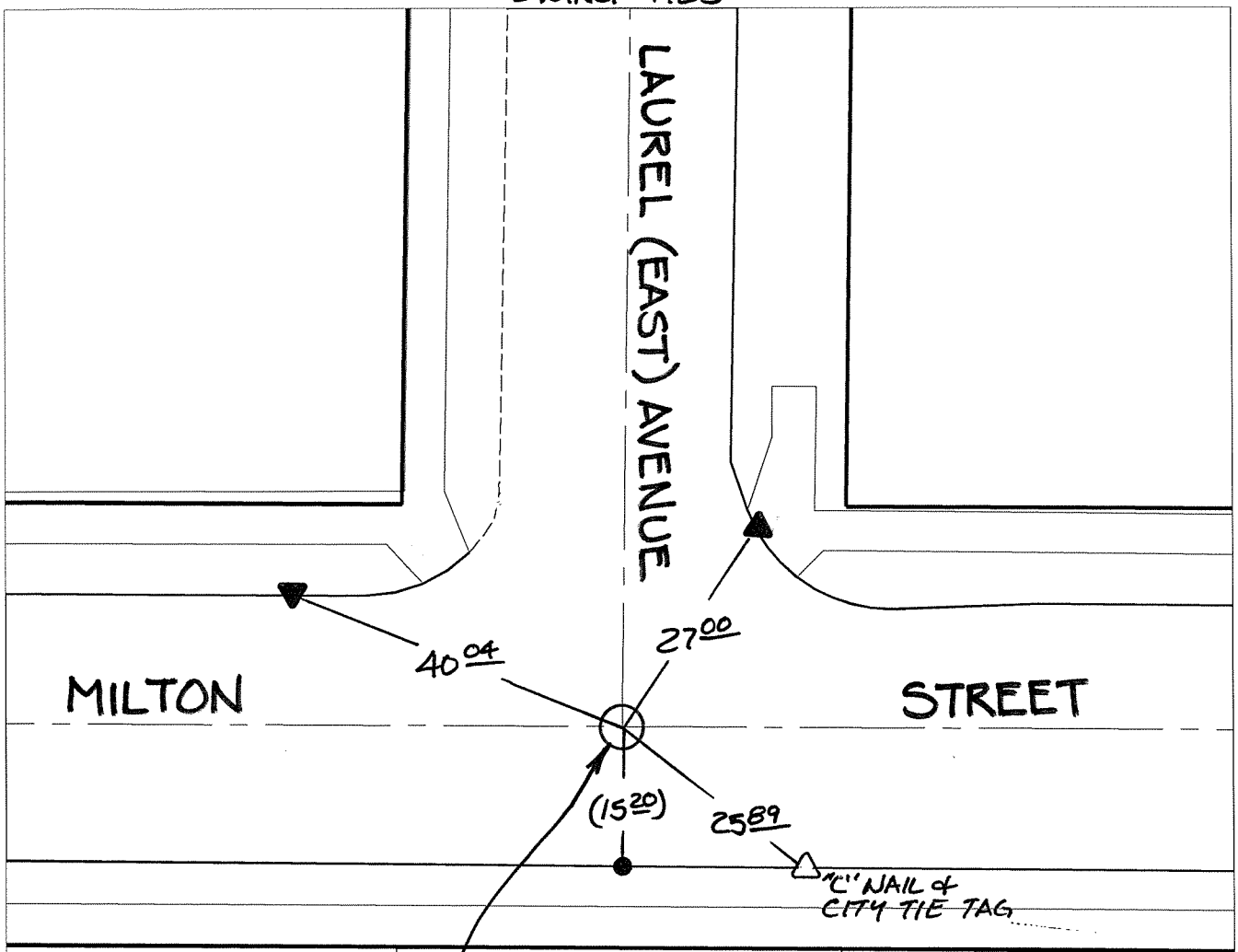


14048.TIF

Street: LAUREL (EAST) AVENUE X-Street: MILTON STREET  
OFFICIAL USE ONLY

SWING TIES



SET 3" NAIL & TIN X-TIES OVER S.M.H. LID FLUSH PER CITY TIE SHT. DATED 8-27-01

HISTORICAL DATA

- CITY TIE SHT. DATED 2-12-98
- CRFB 997/61
- CRFB 205/5

▲ FD P.K. NAIL ON T/C

- × FD. Ramset Nail on T/C
- FD. LD. & TK. on T/C
- FD. "C" Nail on T/C
- Set LD. & TK. on T/C

P.K. and City Engineer tag to be set @ surface after street construction is complete. (If possible)

Scale: 1" = 20'  
 Date: 06/26/12  
 Drawn by: pw  
 F.B.:  
 TR-Sec: T2SR5W-13

**OFFICIAL TIE PLAT**  
CITY OF RIVERSIDE

*These ties are for the purpose of perpetuating the found monumentation. No claim is made as to the relationship of the points or lines shown hereon to true boundary locations.*



Sheet 1 of 1  
Cadme MB: 25-2