

14049.T1E

Street: MILTON STREET

OFFICIAL USE ONLY X-Street: LAUREL (WEST) AVENUE

**HISTORICAL DATA**

-CITY TIE SH.T. DATED  
2-12-98

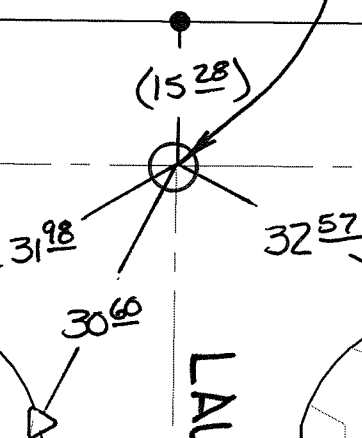
FD. 2<sup>d</sup> X-TIES FLUSH  
OVER M.H. LID RESET  
W/3<sup>d</sup> X-TIES FLUSH  
OVER M.H. LID

MILTON

STREET

LAUREL (WEST) AVENUE

( ) - INDICATES REC.  
DIST. PER. CITY  
TIE SH.T. DATED  
2-12-98



- ✕ FD. Ramset Nail on T/C      ● FD. LD. & TK. on T/C
- FD. "C" Nail on T/C      ○ Set LD. & TK. on T/C

P.K. and City Engineer tag to be set @  
surface after street construction is  
complete. (If possible)

Scale: 1" = 20'  
 Date: 06/28/12  
 Drawn by: pw  
 F.B.:  
 TR-Sec: T2SR5W-13

**OFFICIAL TIE PLAT**  
 CITY OF RIVERSIDE

*These ties are for the purpose of perpetuating the found  
 monumentation. No claim is made as to the relationship of  
 the points or lines shown hereon to true boundary locations.*



Sheet 1 of 1  
 Cadme MB: 25-2