

SWING TIES

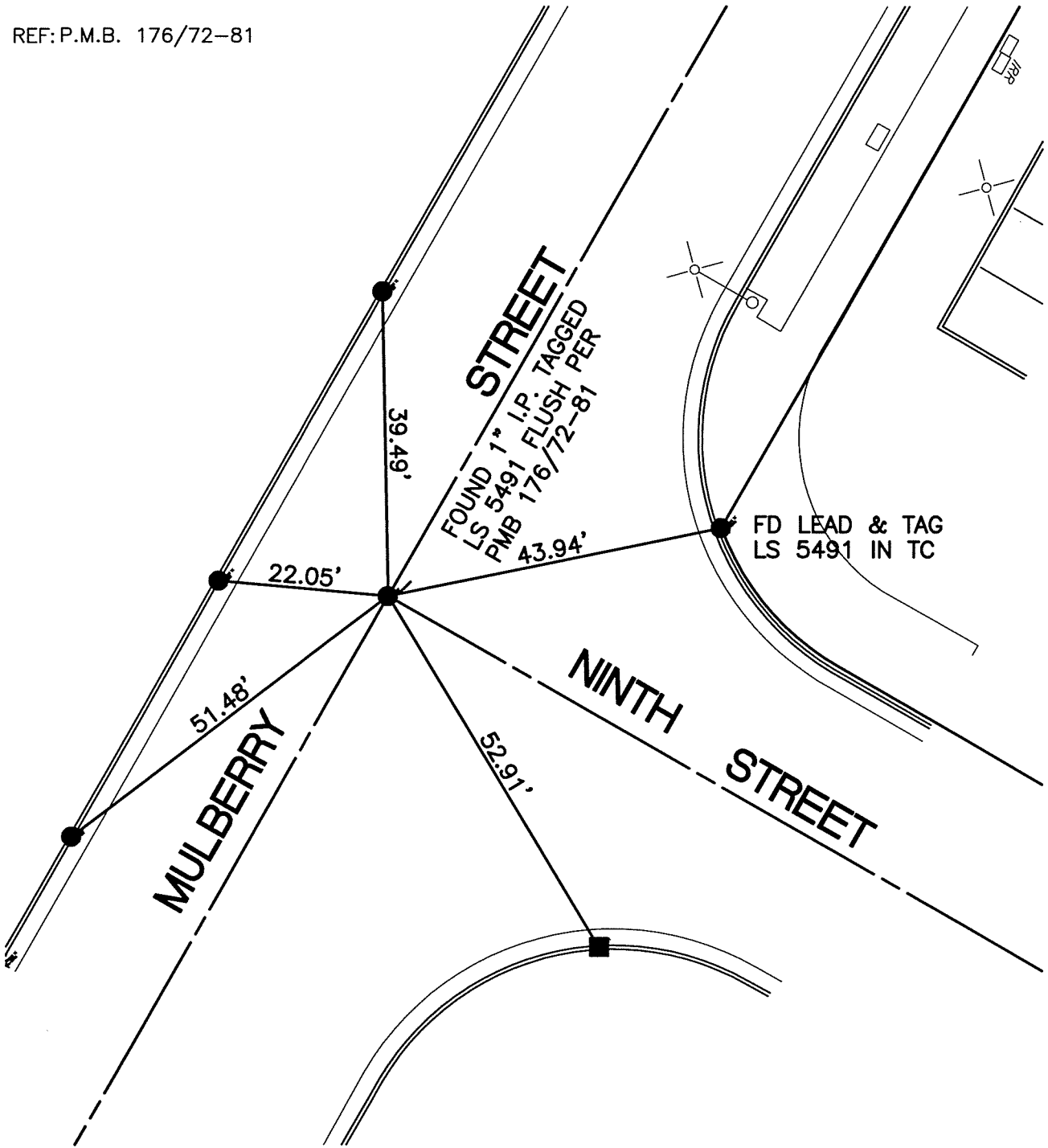
REF: P.M.B. 176/72-81

1405/171E

STREET: MULBERRY STREET

OFFICIAL USE ONLY

X-STREET: NINTH STREET



SET NAIL & CITY TIE TAG IN T.C.

- - FOUND LEAD & TACK IN T.C.
- - FOUND "C" NAIL IN T.C.

SCALE: 1"=20'
DATE: 8/27/12
DRAWN BY: CURT
F.B.:
SEC: 23 T.2S., R.5W

OFFICIAL TIE PLAT CITY OF RIVERSIDE

THESE TIES ARE FOR THE PURPOSE OF PERPETUATING THE FOUND MONUMENTATION. NO CLAIM IS MADE AS THE RELATIONSHIP OF THE POINTS OR LINES SHOWN HEREON TO TRUE BOUNDARY LOCATIONS



SHEET 1 OF 1