

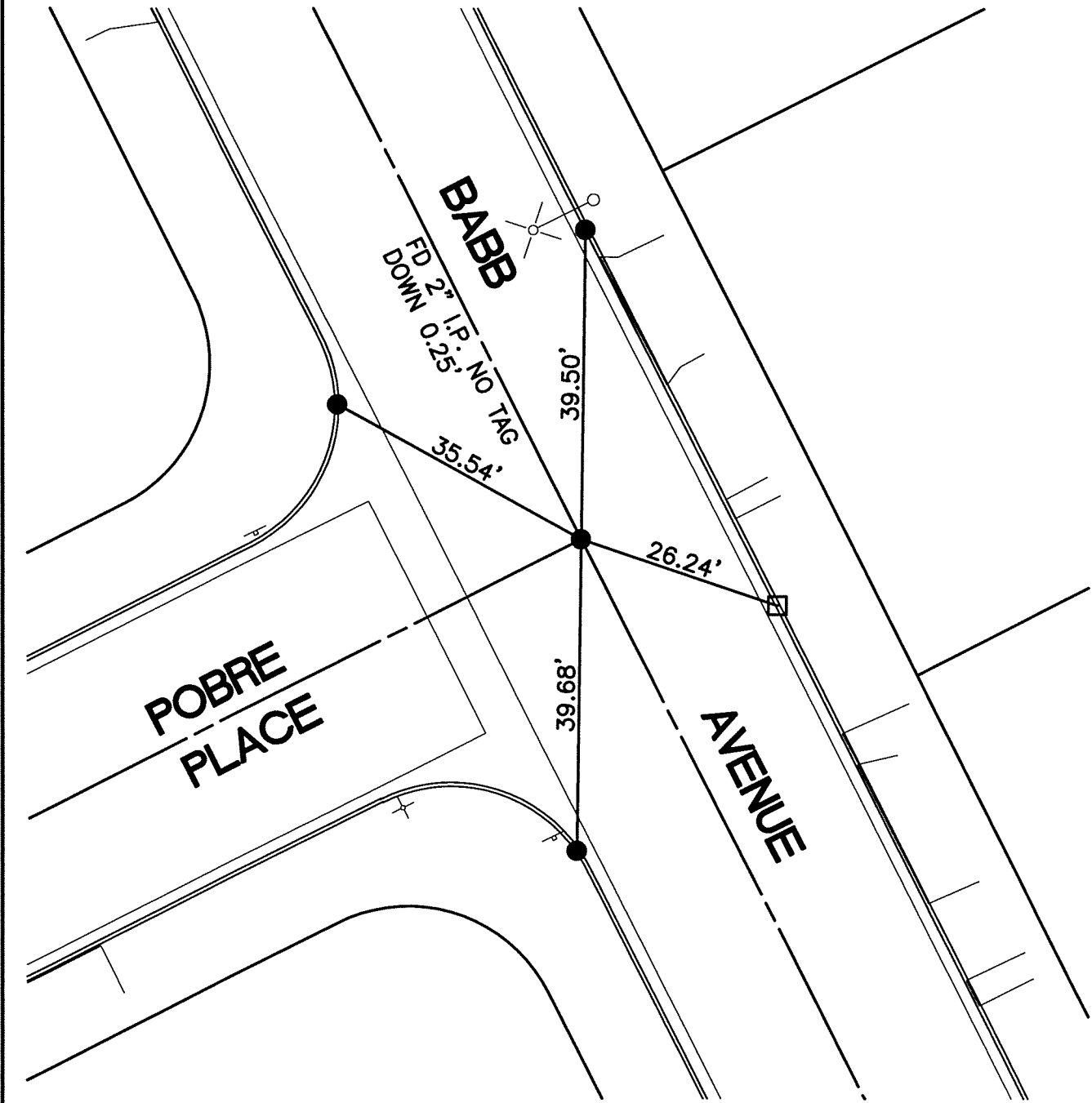
# TRANSIT TIES

REF: CRFB 738/69

140617JE

STREET: BABB AVENUE

X-STREET: POBRE PLACE  
OFFICIAL USE ONLY



- - FOUND LEAD & TACK IN T.C.
- - SET PK NAIL IN T.C.

SCALE: 1"=20'  
 DATE: 8/27/12  
 DRAWN BY: CURT  
 F.B.:  
 SEC: 1 T.3S., R.6W.

## OFFICIAL TIE PLAT CITY OF RIVERSIDE

THESE TIES ARE FOR THE PURPOSE OF PERPETUATING THE FOUND MONUMENTATION. NO CLAIM IS MADE AS THE RELATIONSHIP OF THE POINTS OR LINES SHOWN HEREON TO TRUE BOUNDARY LOCATIONS



SHEET 1 OF 1