

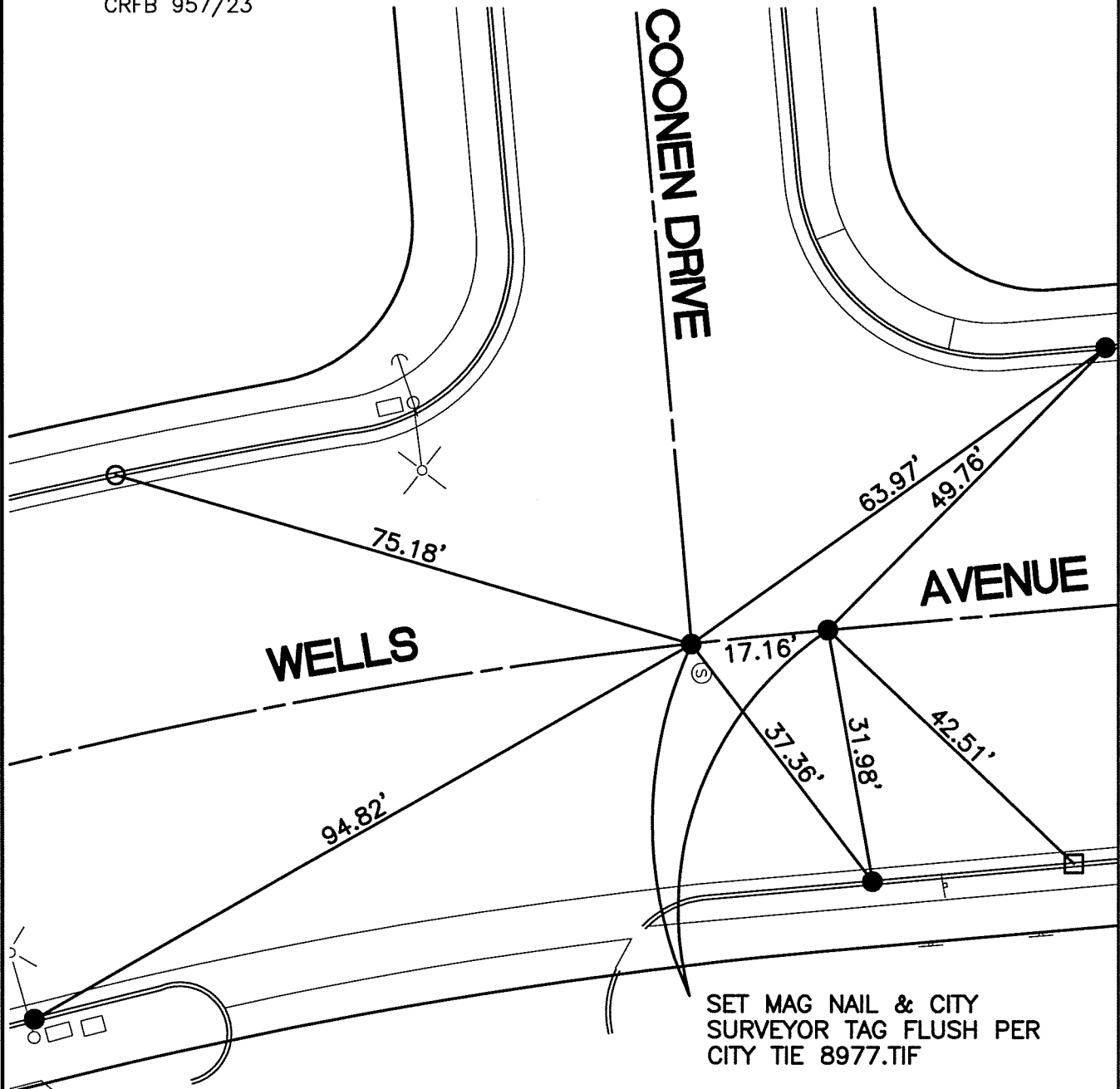
SWING TIES

REF: 8977.TIF
 CRFB 957/25-30
 CRFB 957/23

14064.TIF

STREET: WELLS AVENUE

X-STREET: COONEN DRIVE
 OFFICIAL USE ONLY



- - SET NAIL & CITY TIE TAG IN T.C.
- - FOUND LEAD & TACK IN T.C.
- - SET PK NAIL IN T.C.

SCALE: 1"=20'

DATE: 8/27/12

DRAWN BY: CURT

F.B.:

SEC: 1 T.3S., R.6W.

OFFICIAL TIE PLAT CITY OF RIVERSIDE

THESE TIES ARE FOR THE PURPOSE OF PERPETUATING THE FOUND MONUMENTATION. NO CLAIM IS MADE AS THE RELATIONSHIP OF THE POINTS OR LINES SHOWN HEREON TO TRUE BOUNDARY LOCATIONS



SHEET 1 OF 1