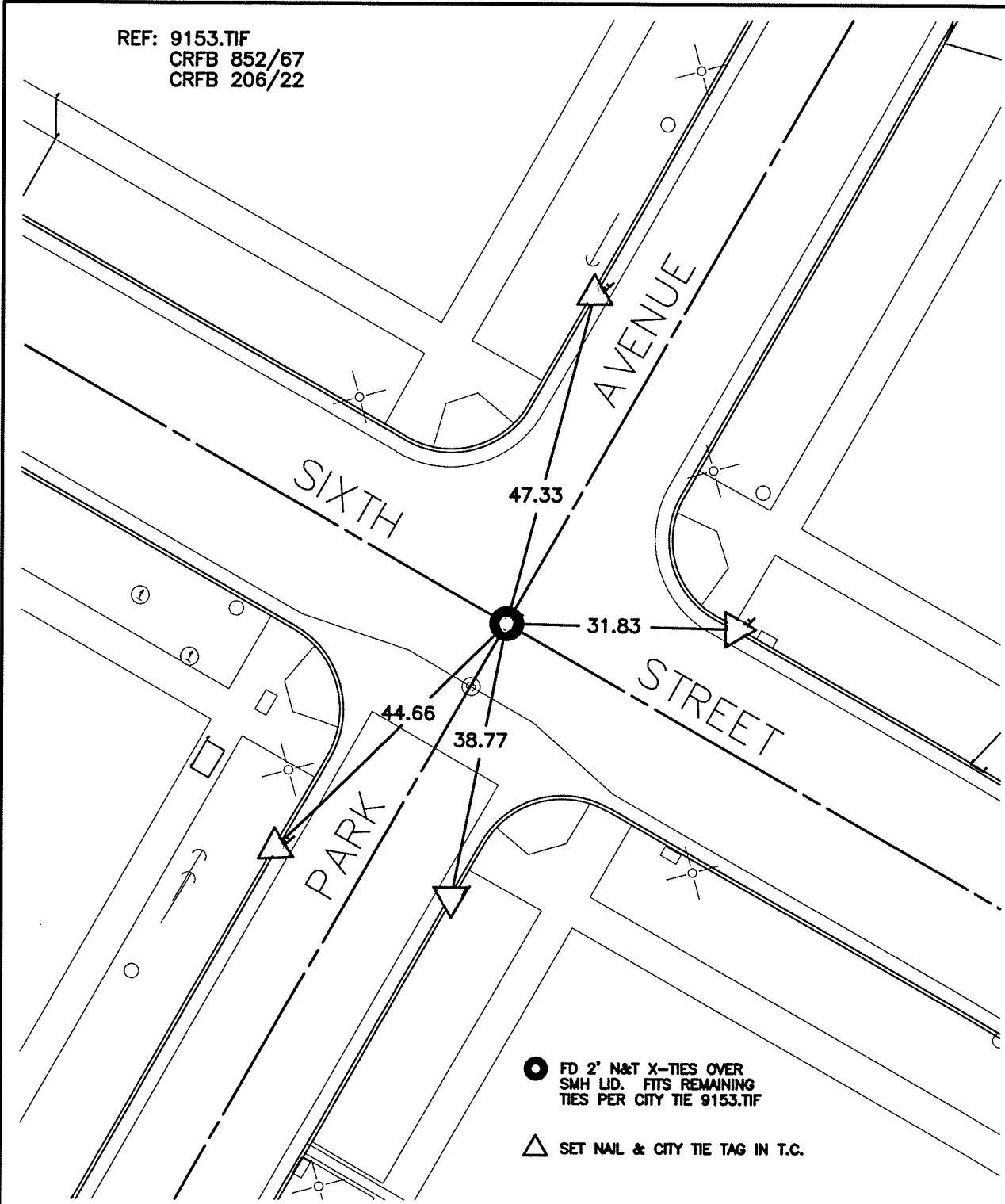


SWING TIES

REF: 9153.TIF
 CRFB 852/67
 CRFB 206/22



14065.TIF
 STREET: PARK AVENUE
 X-STREET: SIXTH STREET
 OFFICIAL USE ONLY

SCALE: 1"=20'
 DATE: 02/10/10
 DRAWN BY: L. Harris
 F.B.:
 SEC. 24 T.2S.,R.5W

OFFICIAL TIE PLAT
 CITY OF RIVERSIDE

THESE TIES ARE FOR THE PURPOSE OF PERPETUATING THE FOUND
 MONUMENTATION. NO CLAIM IS MADE AS THE RELATIONSHIP OF THE
 POINTS OR LINES SHOWN HEREON TO TRUE BOUNDARY LOCATIONS

SHEET 1 OF 1
 Cadme MB: 40-2