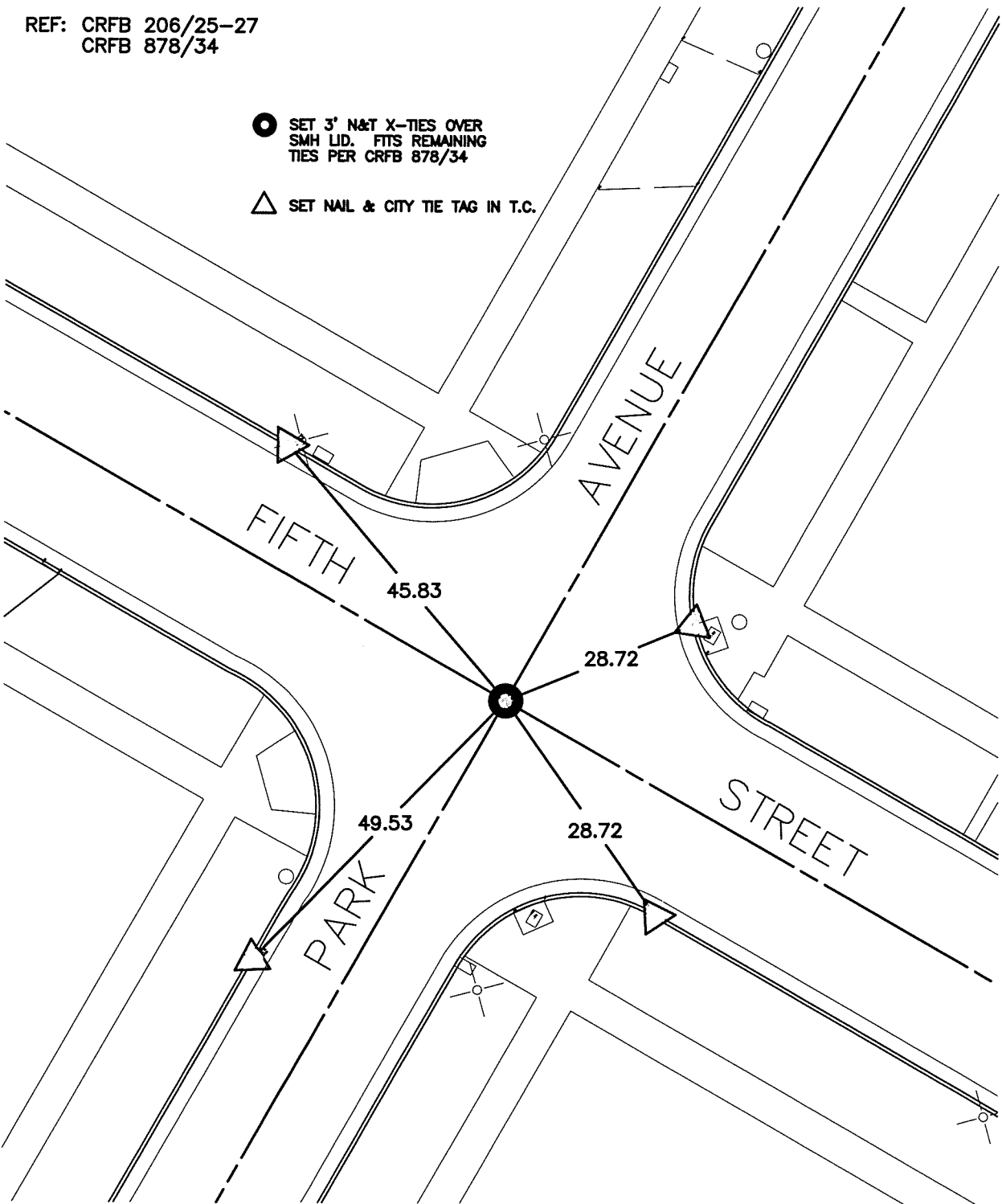


SWING TIES

REF: CRFB 206/25-27
CRFB 878/34

● SET 3" N&T X-TIES OVER
SMH LID. FITS REMAINING
TIES PER CRFB 878/34

△ SET NAIL & CITY TIE TAG IN T.C.



14066.71

STREET: FIFTH STREET


OFFICIAL USE ONLY

X-STREET: PARK AVENUE

SCALE: 1"=20'
DATE: 02-10-10
DRAWN BY: L. Harris
F.B.:
SEC 24 T.2S., R.5W.

OFFICIAL TIE PLAT
CITY OF RIVERSIDE

THESE TIES ARE FOR THE PURPOSE OF PERPETUATING THE FOUND MONUMENTATION. NO CLAIM IS MADE AS THE RELATIONSHIP OF THE POINTS OR LINES SHOWN HEREON TO TRUE BOUNDARY LOCATIONS



SHEET 1 OF 1
Cadme MB: 25-7