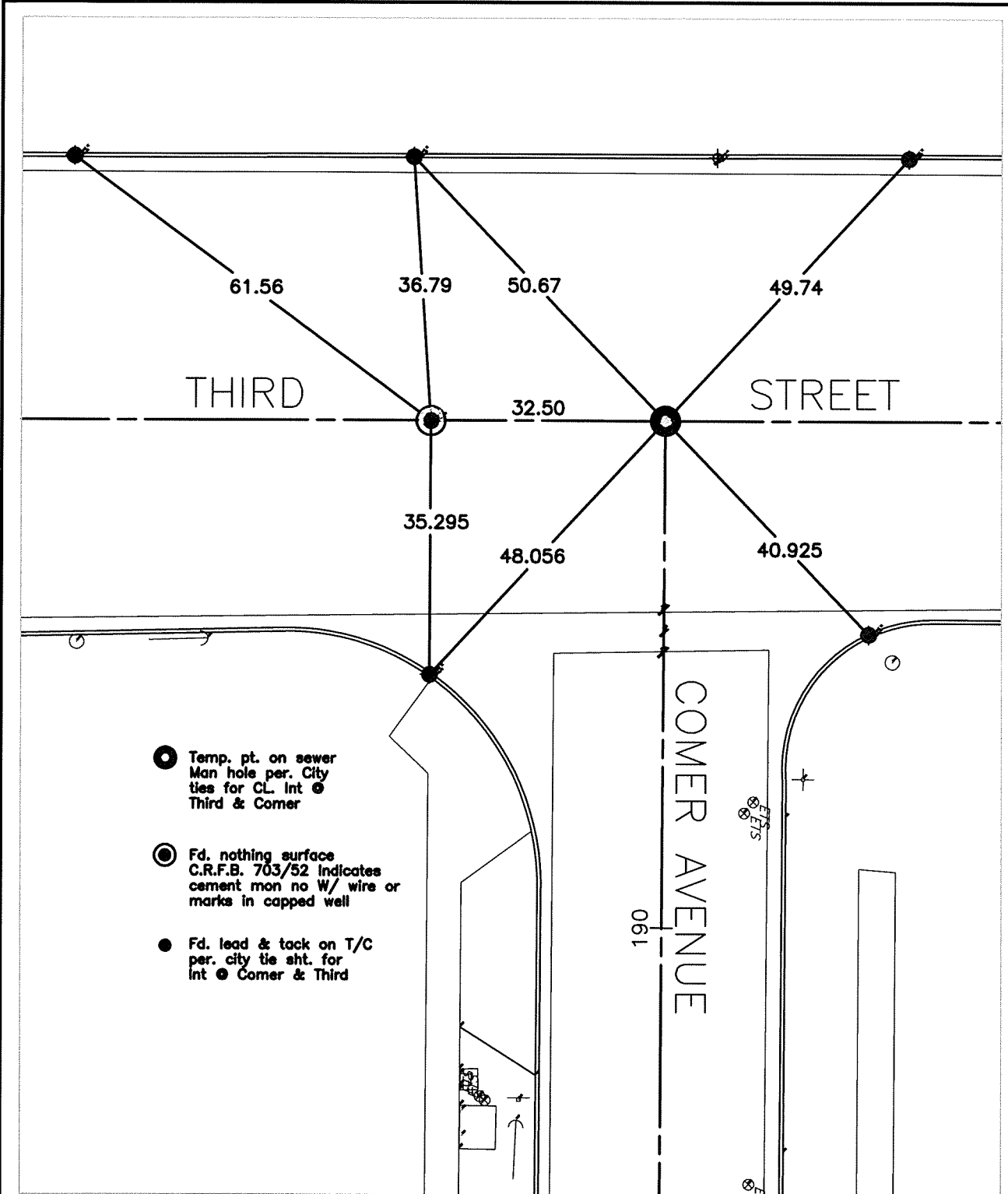


14067.711

STREET: THIRD STREET

STREET: X-STREET: COMER AVENUE  
OFFICIAL USE ONLY



SCALE: 1"=20'

DATE: 02-10-10

DRAWN BY: L. Harris

F.B.:

TR-SEC: T.2S., R.5W.-24

OFFICIAL TIE PLAT  
CITY OF RIVERSIDE

THESE TIES ARE FOR THE PURPOSE OF PERPETUATING THE FOUND MONUMENTATION. NO CLAIM IS MADE AS THE RELATIONSHIP OF THE POINTS OR LINES SHOWN HEREON TO TRUE BOUNDARY LOCATIONS

SHEET 1 OF 1

Cadme MB: 25-7