

14078 TIE

Street:

GRAMERCY PLACE

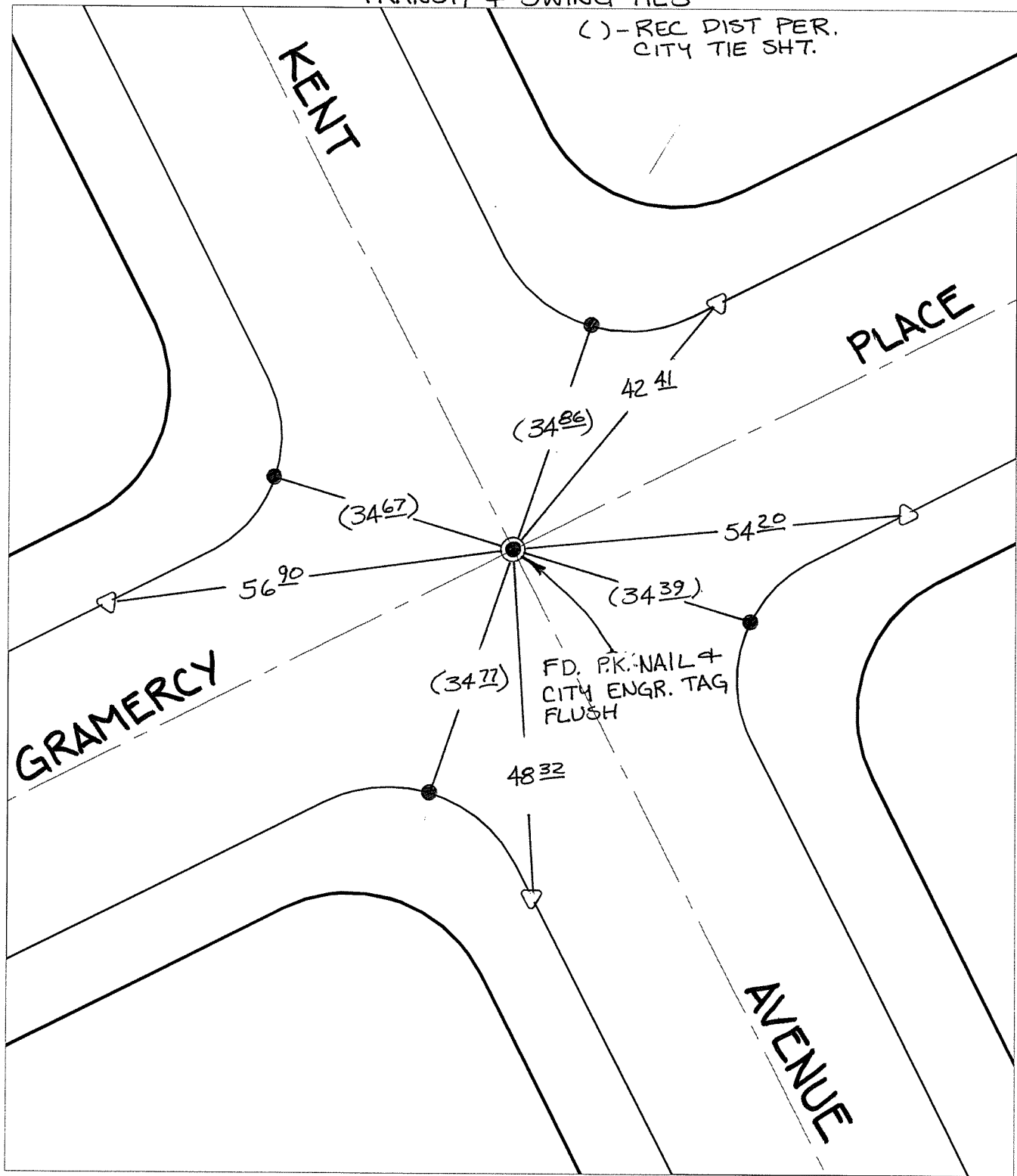
X-Street:

KENT AVENUE

OFFICIAL USE ONLY

TRANSIT + SWING TIES

( ) - REC DIST PER. CITY TIE SHT.



- ✕ FD. Ramset Nail on T/C    ● FD. LD. & TK. on T/C    P.K. and City Engineer tag to be set @ surface after street construction is complete. (If possible)
- FD. "C" Nail on T/C    ○ Set LD. & TK. on T/C

Scale: 1" = 20'  
 Date: 06/01/09  
 Drawn by: pw  
 F.B.:  
 TR-Sec: T3SR6W-1

## OFFICIAL TIE PLAT

### CITY OF RIVERSIDE

*These ties are for the purpose of perpetuating the found monumentation. No claim is made as to the relationship of the points or lines shown hereon to true boundary locations.*



Sheet 1 of 1  
 Cadme MB: 50-7