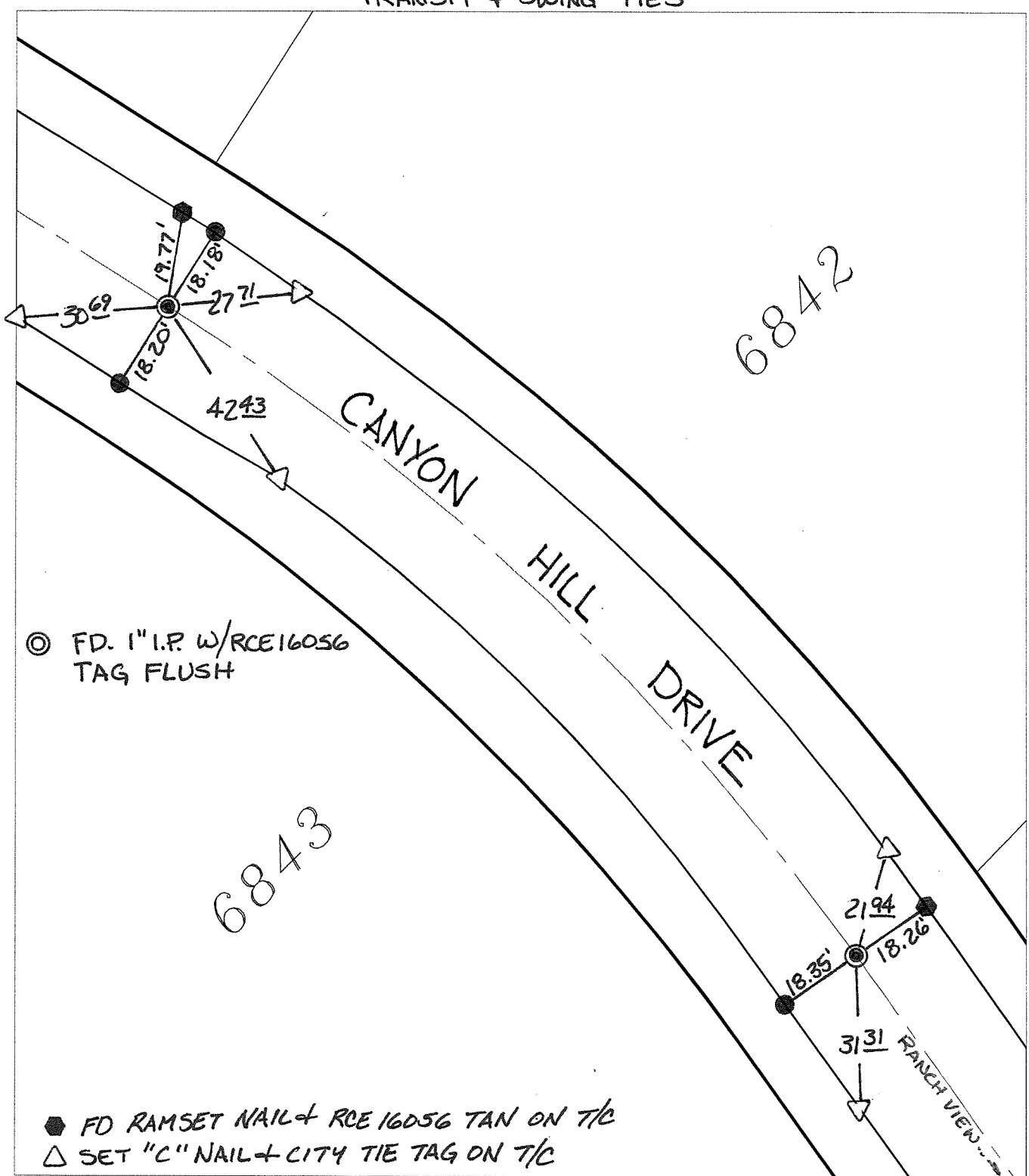


14088.TIF

Street: CANYON HILL DR BE & EC X-Street: NE OF RANCH VIEW RD  
OFFICIAL USE ONLY

TRANSIT + SWING TIES



⊙ FD. 1" I.P. W/RCE16056 TAG FLUSH

● FD RAMSET NAIL + RCE 16056 TAN ON T/C  
△ SET "C" NAIL + CITY TIE TAG ON T/C

- × FD. Ramset Nail on T/C
- FD. LD. & TK. on T/C
- FD. "C" Nail on T/C
- Set LD. & TK. on T/C

P.K. and City Engineer tag to be set @ surface after street construction is complete. (If possible)

Scale: 1" = 30'  
 Date: 01/23/12  
 Drawn by: pw  
 F.B.:  
 TR-Sec: T3SR5W-12

## OFFICIAL TIE PLAT

### CITY OF RIVERSIDE

*These ties are for the purpose of perpetuating the found monumentation. No claim is made as to the relationship of the points or lines shown hereon to true boundary locations.*



Sheet 1 of 1  
 Cadme MB: 70-4