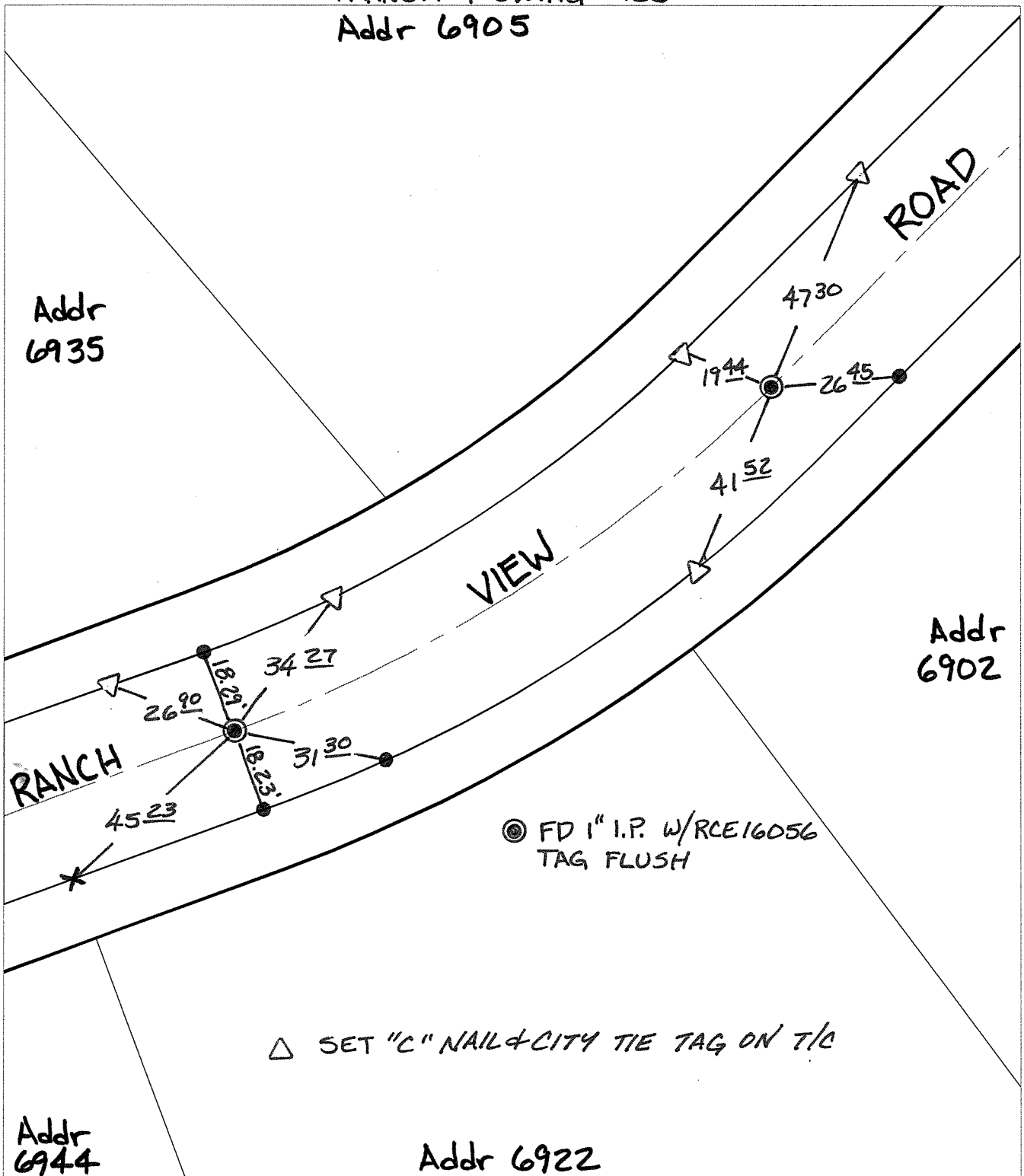


14091.TIF

Street: RANCH VIEW ROAD BC & EC X-Streets OF CANYON HILL DRIVE

OFFICIAL USE ONLY

TRANSIT & SWING TIES
Addr 6905



Addr 6935

Addr 6902

RANCH

VIEW

ROAD

● FD 1" I.P. W/RCE16056
TAG FLUSH

△ SET "C" NAIL & CITY TIE TAG ON T/C

Addr 6944

Addr 6922

- × FD. Ramset Nail on T/C ● FD. LD. & TK. on T/C
- FD. "C" Nail on T/C ○ Set LD. & TK. on T/C

P.K. and City Engineer tag to be set @ surface after street construction is complete. (If possible)

Scale: 1" = 30'
 Date: 01/20/12
 Drawn by: pw
 F.B.:
 TR-Sec: T3SR5W-12

OFFICIAL TIE PLAT

CITY OF RIVERSIDE

These ties are for the purpose of perpetuating the found monumentation. No claim is made as to the relationship of the points or lines shown hereon to true boundary locations.



Sheet 1 of 1
 Cadme MB: 70-6