

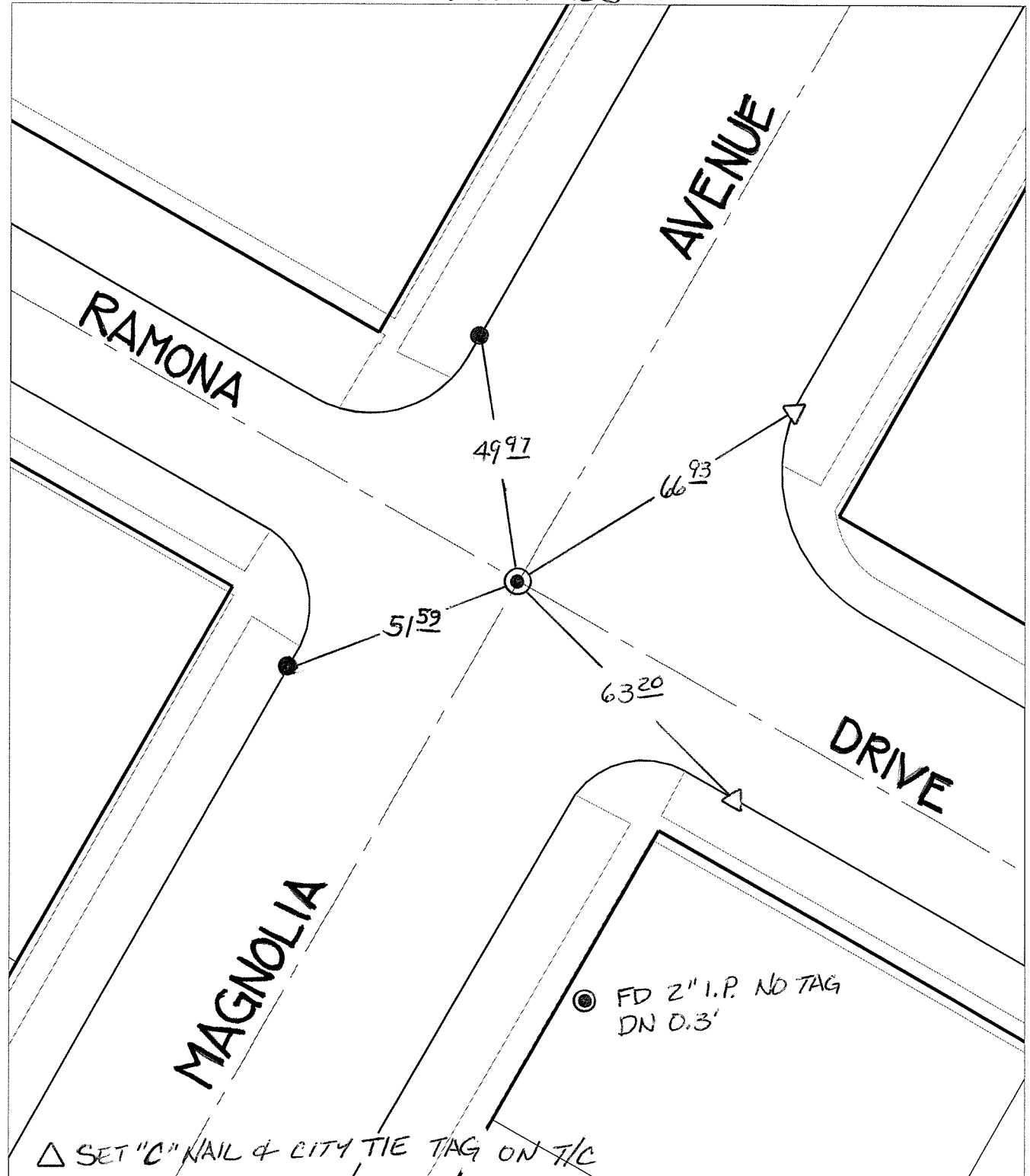
14108.TIF

Street: MAGNOLIA AVENUE

OFFICIAL USE ONLY

X-Street: RAMONA DRIVE

SWING TIES



- ✕ FD. Ramset Nail on T/C ● FD. LD. & TK. on T/C P.K. and City Engineer tag to be set @ surface after street construction is complete. (If possible)
- FD. "C" Nail on T/C ○ Set LD. & TK. on T/C

△ SET "C" NAIL & CITY TIE TAG ON T/C

OFFICIAL TIE PLAT

CITY OF RIVERSIDE



These ties are for the purpose of perpetuating the found monumentation. No claim is made as to the relationship of the points or lines shown hereon to true boundary locations.

Scale: 1" = 30'
 Date: 01/15/13
 Drawn by: pw
 F.B.:
 TR-Sec: T2SR5W-27

Sheet 1 of 1
 Cadme MB: 39-3