

14113.TIF

Street:

RIVERSIDE AVENUE

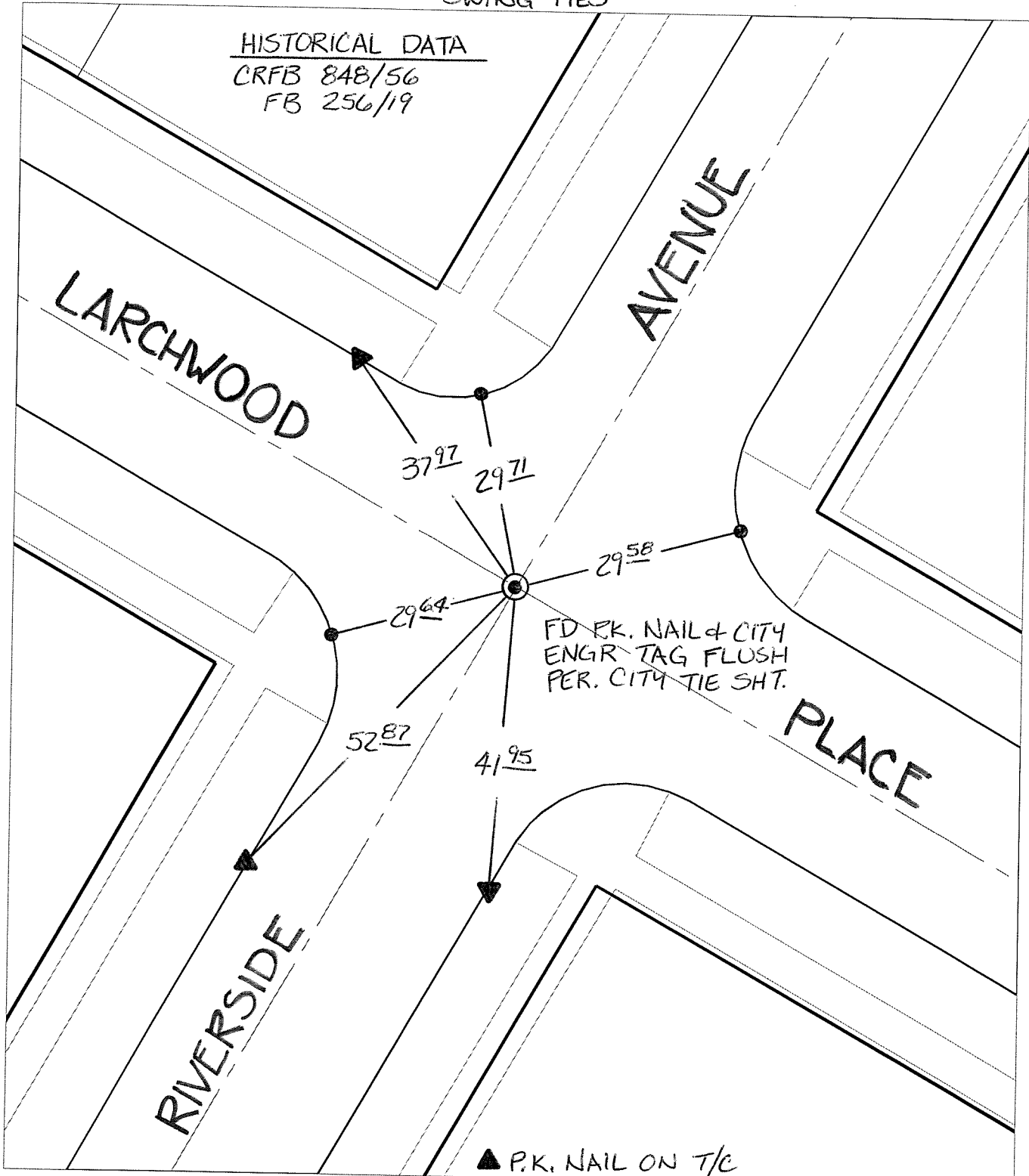
OFFICIAL USE ONLY

X-Street:

LARCHWOOD PLACE

SWING TIES

HISTORICAL DATA
CRFB 848/56
FB 256/19



FD PK. NAIL & CITY
ENGR TAG FLUSH
PER. CITY TIE SHT.

▲ P.K. NAIL ON T/C

- ✕ FD. Ramset Nail on T/C
- FD. LD. & TK. on T/C
- Set LD. & TK. on T/C
- FD. "C" Nail on T/C
- P.K. and City Engineer tag to be set @ surface after street construction is complete. (If possible)

Scale: 1" = 20'
 Date: 01/04/13
 Drawn by: pw
 F.B.:
 TR-Sec: T2SR5W-26

OFFICIAL TIE PLAT

CITY OF RIVERSIDE

These ties are for the purpose of perpetuating the found monumentation. No claim is made as to the relationship of the points or lines shown hereon to true boundary locations.



Sheet 1 of 1
Cadme MB: 39-5