

14122.T1E

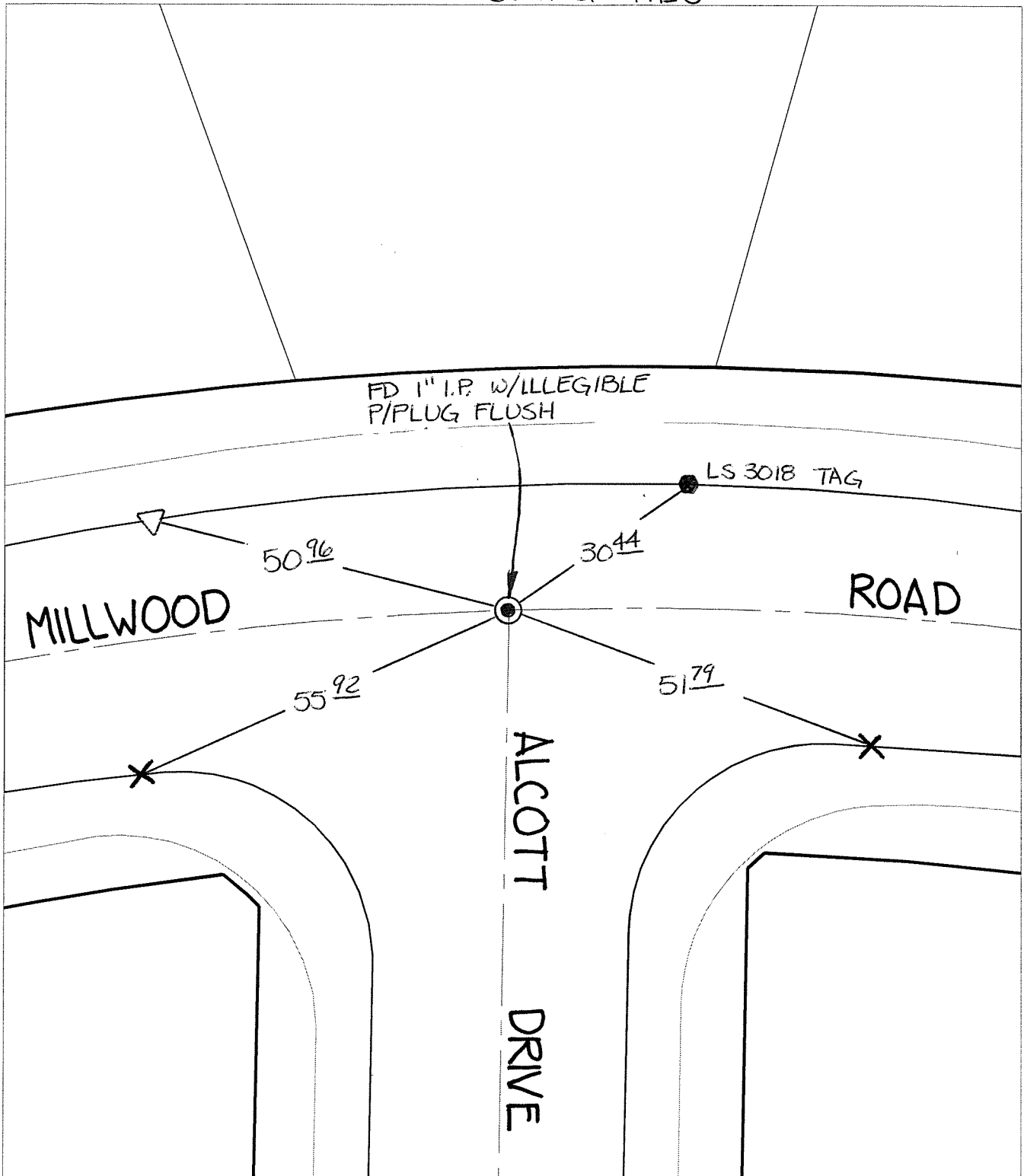
Street:

ALCOTT DRIVE

X-Street:  
OFFICIAL USE ONLY

MILLWOOD ROAD

SWING TIES



- ✕ FD. Ramset Nail on T/C
  - FD. LD. & TK. on T/C
  - FD. "C" Nail on T/C
  - Set LD. & TK. on T/C
- P.K. and City Engineer tag to be set @ surface after street construction is complete. (If possible)*

Scale: 1" = 20'

Date: 02/15/13

Drawn by: pw


F.B.:

TR-Sec: T3SR4W-6

## OFFICIAL TIE PLAT

### CITY OF RIVERSIDE

*These ties are for the purpose of perpetuating the found monumentation. No claim is made as to the relationship of the points or lines shown hereon to true boundary locations.*



Sheet 1 of 1

Cadme MB: 71-1