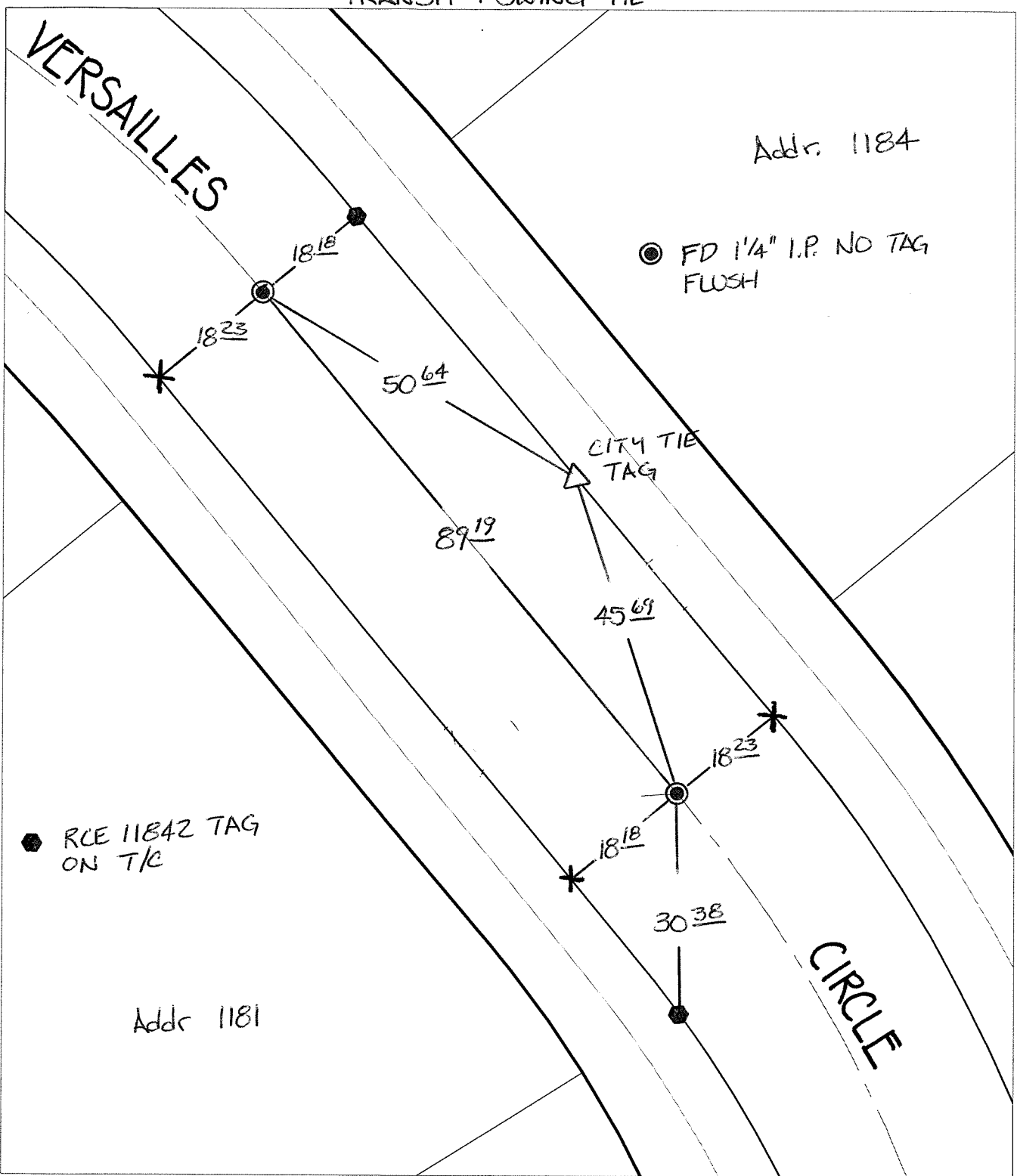


14123.T1E

Street: VERSAILLES CIRCLE EC & X-Street BC N. OF WILDING CIRCLE

OFFICIAL USE ONLY

TRANSIT & SWING TIE



Addr. 1184

● FD 1/4" I.P. NO TAG FLUSH

CITY TIE TAG

● RCE 11842 TAG ON T/C

Addr 1181

CIRCLE

- ✕ FD. Ramset Nail on T/C    ● FD. LD. & TK. on T/C    P.K. and City Engineer tag to be set @ surface after street construction is complete. (If possible)
- FD. "C" Nail on T/C    ○ Set LD. & TK. on T/C

Scale: 1" = 20'

Date: 03/01/13

Drawn by: pw

F.B.:

TR-Sec: T3SR4W-7

## OFFICIAL TIE PLAT

### CITY OF RIVERSIDE

*These ties are for the purpose of perpetuating the found monumentation. No claim is made as to the relationship of the points or lines shown hereon to true boundary locations.*



Sheet 1 of 1

Cadme MB: 71-4