

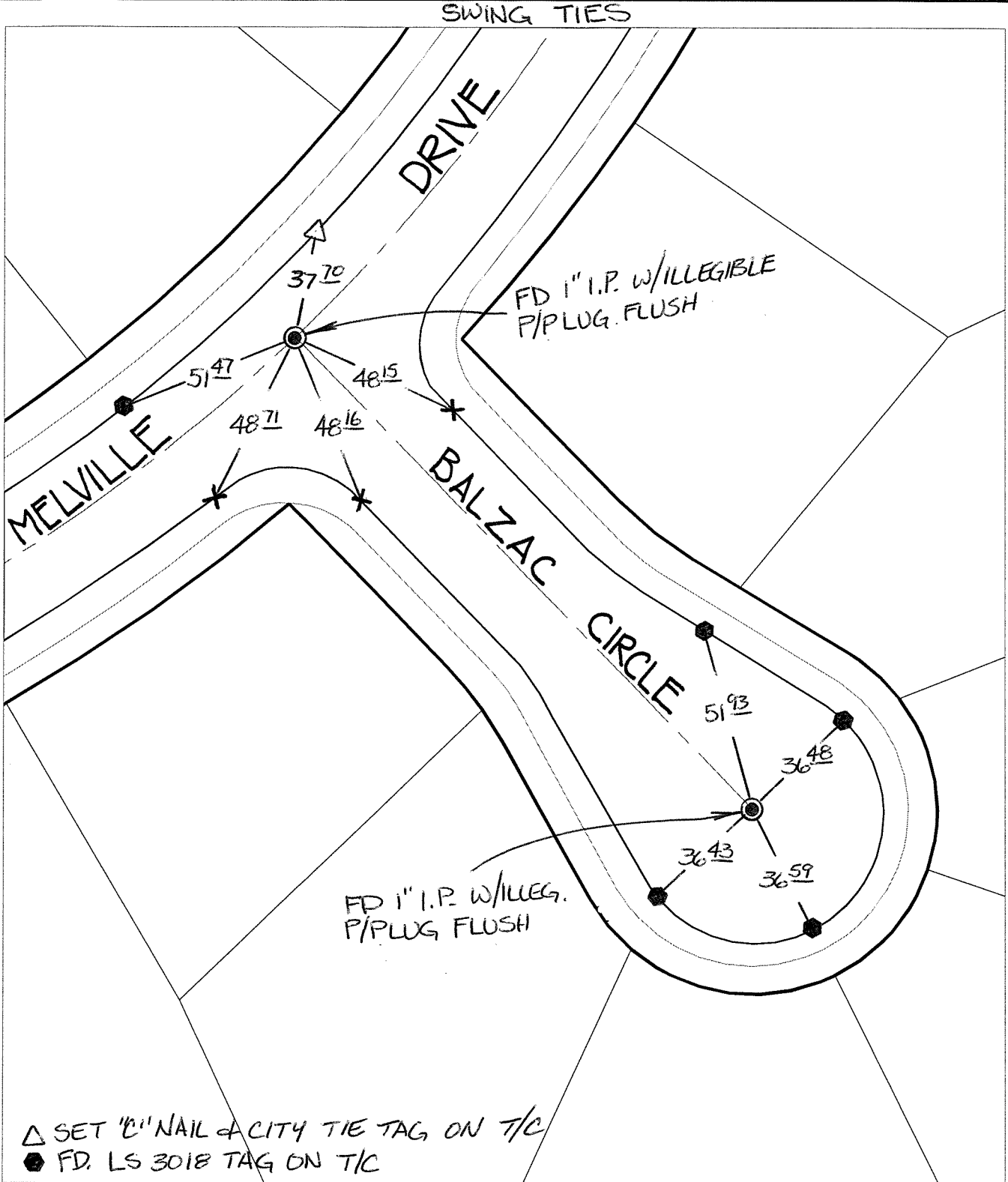
14129.T1F

Street:

BALZAC CIRCLE

X-Street:  
OFFICIAL USE ONLY

MELVILLE DRIVE



△ SET "C" NAIL & CITY TIE TAG ON T/C  
 ● FD. LS 3018 TAG ON T/C


- × FD. Ramset Nail on T/C      ● FD. LD. & TK. on T/C
- FD. "C" Nail on T/C        ○ Set LD. & TK. on T/C

P.K. and City Engineer tag to be set @ surface after street construction is complete. (If possible)

Scale: 1" = 40'  
 Date: 03/12/13  
 Drawn by: pw  
 F.B.:  
 TR-Sec: T3SR4W-6

**OFFICIAL TIE PLAT**  
**CITY OF RIVERSIDE**

*These ties are for the purpose of perpetuating the found monumentation. No claim is made as to the relationship of the points or lines shown hereon to true boundary locations.*



Sheet 1 of 1  
 Cadme MB: 71-2