

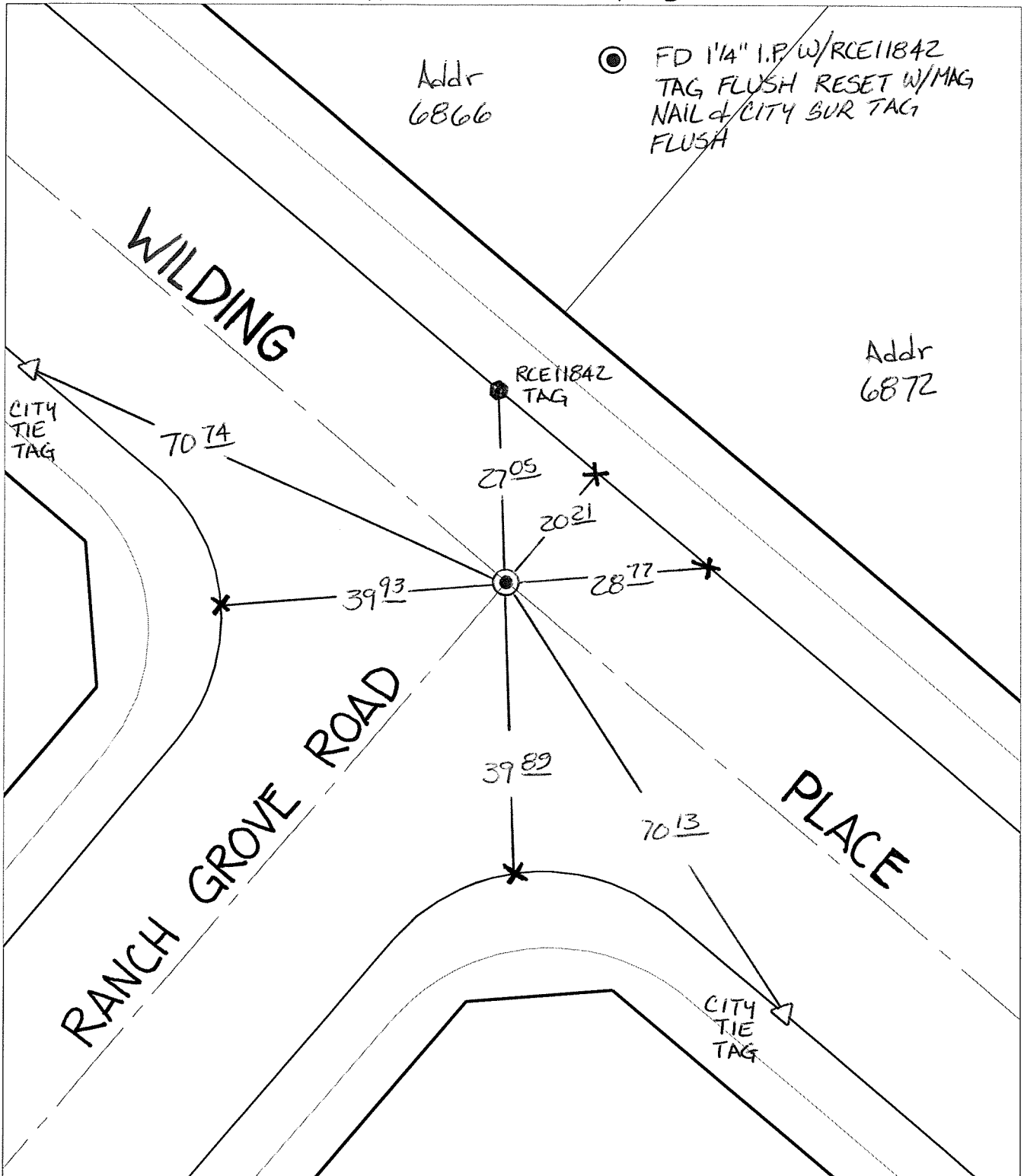
14130.TIF

Street:

WILDING PLACE

X-Street: RANCH GROVE ROAD
OFFICIAL USE ONLY

TRANSIT & SWING TIE



Addr
6866

● FD 1/4" I.P.W/RCE11842
TAG FLUSH RESET W/MAG
NAIL & CITY SUR TAG
FLUSH

Addr
6872

CITY
TIE
TAG

7074

2705

2021

3993

2877

3989

7013

PLACE

CITY
TIE
TAG

- ✕ FD. Ramset Nail on T/C
- FD. LD. & TK. on T/C
- FD. "C" Nail on T/C
- Set LD. & TK. on T/C

P.K. and City Engineer tag to be set @
surface after street construction is
complete. (If possible)

Scale: 1" = 20'

Date: 02/28/13

Drawn by: pw

F.B.:

TR-Sec: T3SR4W-7

OFFICIAL TIE PLAT

CITY OF RIVERSIDE

*These ties are for the purpose of perpetuating the found
monumentation. No claim is made as to the relationship of
the points or lines shown hereon to true boundary locations.*



Sheet 1 of 1

Cadme MB: 71-4