

14139.TIF

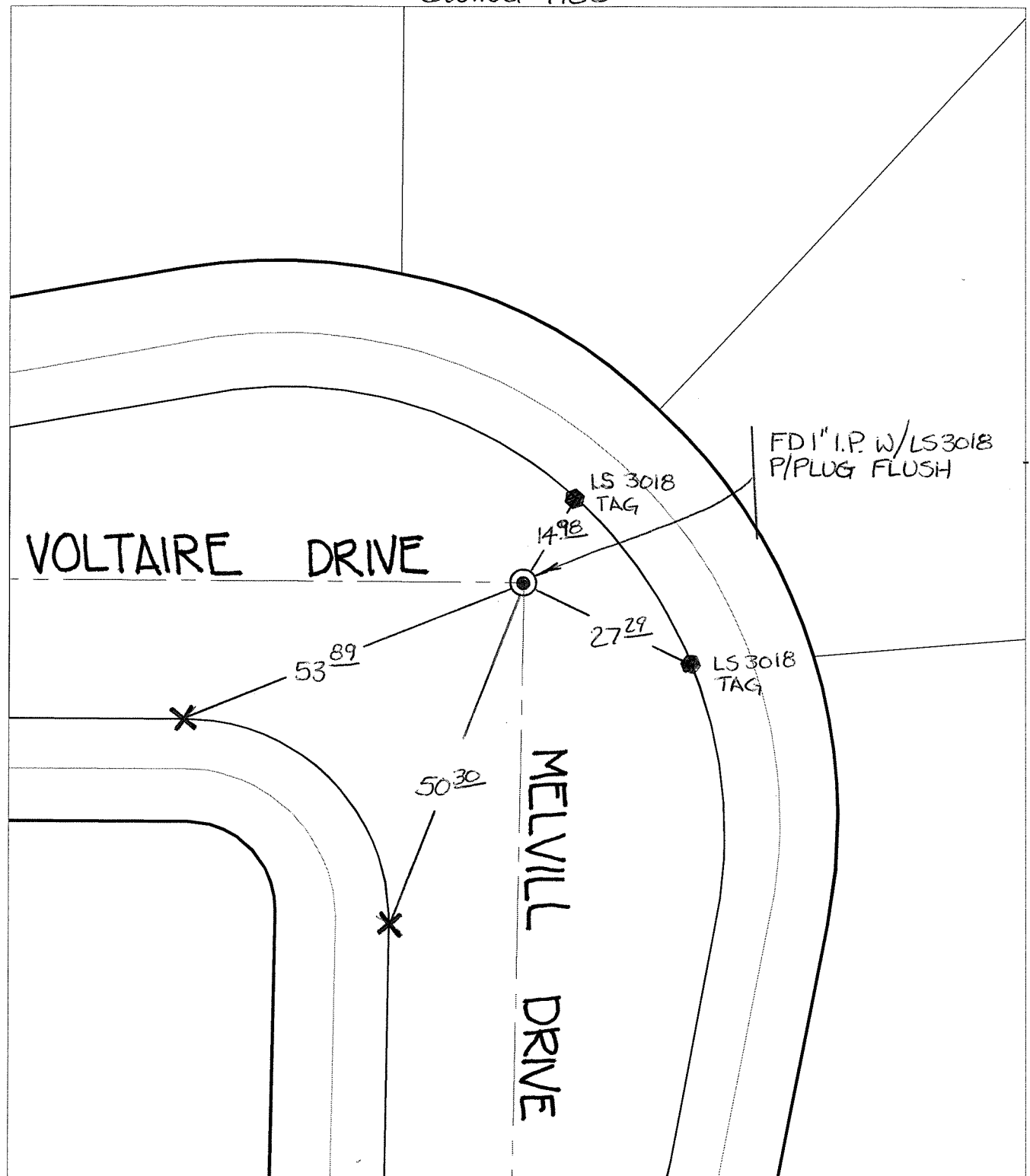
Street:

VOLTAIRE DRIVE

X-Street:  
OFFICIAL USE ONLY

MELVILLE DRIVE

SWING TIES




- ✕ FD. Ramset Nail on T/C    ● FD. LD. & TK. on T/C
- FD. "C" Nail on T/C    ○ Set LD. & TK. on T/C

*P.K. and City Engineer tag to be set @ surface after street construction is complete. (If possible)*

Scale: 1" = 20'  
 Date: 03/25/13  
 Drawn by: pw  
 F.B.:  
 TR-Sec: T3SR4W-6

**OFFICIAL TIE PLAT**  
**CITY OF RIVERSIDE**

*These ties are for the purpose of perpetuating the found monumentation. No claim is made as to the relationship of the points or lines shown hereon to true boundary locations.*



Sheet 1 of 1  
 Cadme MB: 71-2