

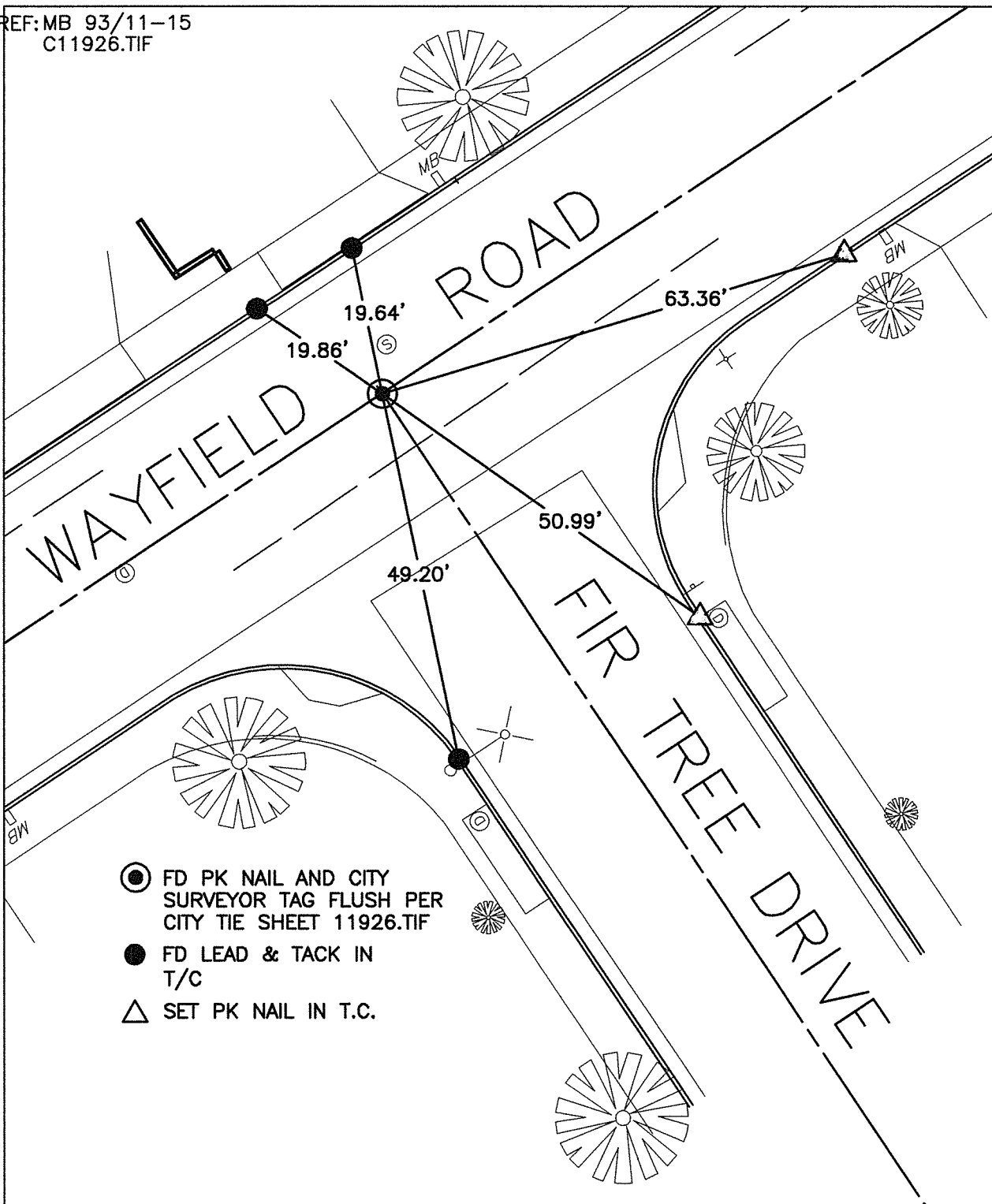
TRANSIT TIES

14184.TIF

STREET: WAYFIELD ROAD

OFFICIAL USE ONLY X-STREET: FIR TREE DRIVE

REF: MB 93/11-15
C11926.TIF

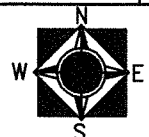


- ⊙ FD PK NAIL AND CITY SURVEYOR TAG FLUSH PER CITY TIE SHEET 11926.TIF
- FD LEAD & TACK IN T/C
- △ SET PK NAIL IN T.C.

SCALE: 1"=20'
DATE: 01/02/14
DRAWN BY: L. Harris
F.B.:
SEC: 14 T.3 S.,R.6 W.

OFFICIAL TIE PLAT CITY OF RIVERSIDE

THESE TIES ARE FOR THE PURPOSE OF PERPETUATING THE FOUND MONUMENTATION. NO CLAIM IS MADE AS THE RELATIONSHIP OF THE POINTS OR LINES SHOWN HEREON TO TRUE BOUNDARY LOCATIONS



SHEET 1 OF 1

Cadme MB: 79-3