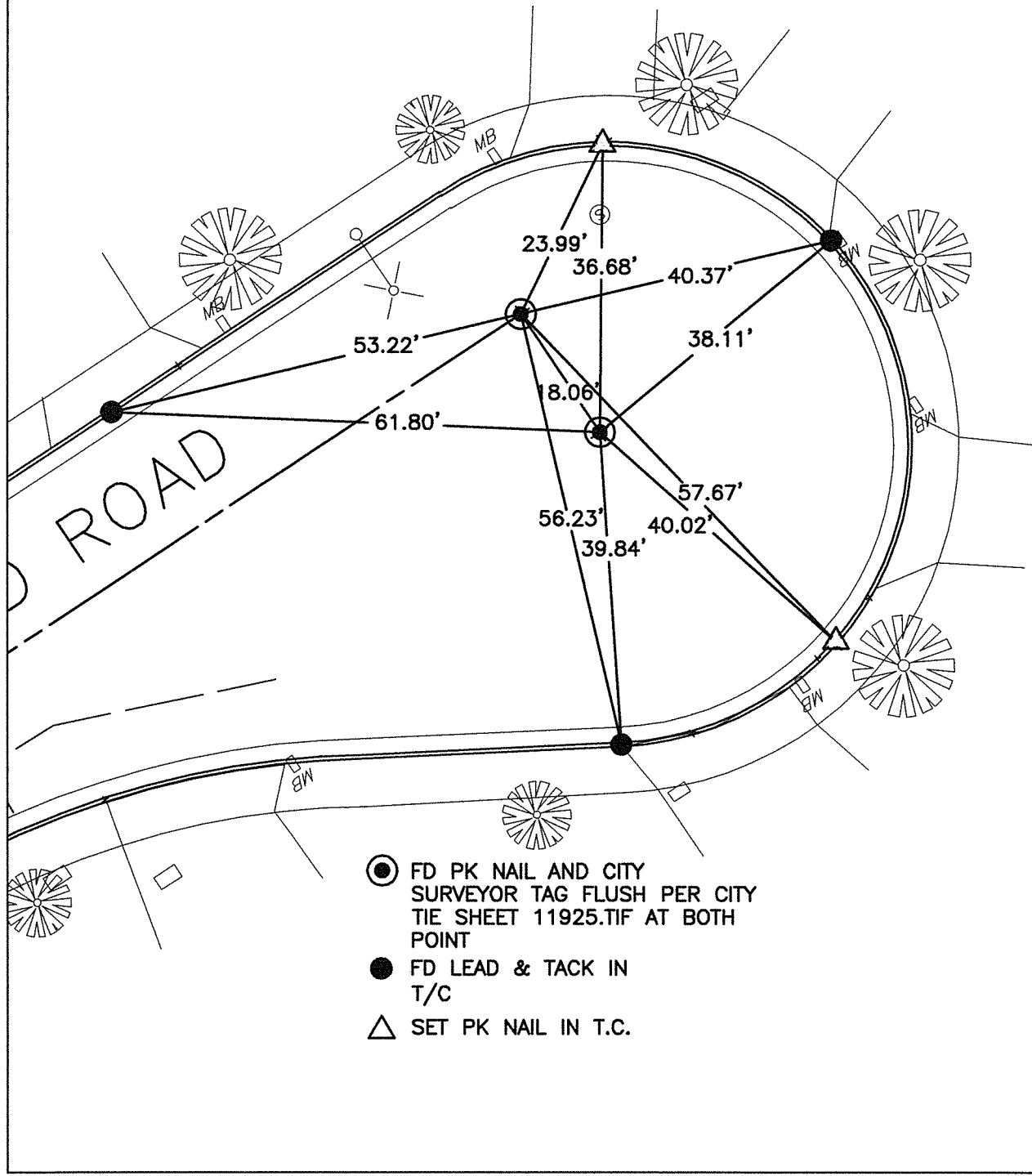


SWING TIES

REF: MB 93/11-15
C11925.TIF



14185.TIF
STREET: WAYFIELD ROAD

OFFICIAL USE ONLY
X-STREET: CUL-DE-SAC

SCALE: 1"=20'

DATE: 01/02/14

DRAWN BY: L. Harris

F.B.:

SEC: 14 T.3 S., R.6 W.

OFFICIAL TIE PLAT CITY OF RIVERSIDE

THESE TIES ARE FOR THE PURPOSE OF PERPETUATING THE FOUND MONUMENTATION. NO CLAIM IS MADE AS THE RELATIONSHIP OF THE POINTS OR LINES SHOWN HEREON TO TRUE BOUNDARY LOCATIONS



SHEET 1 OF 1

Cadme MB: 79-3