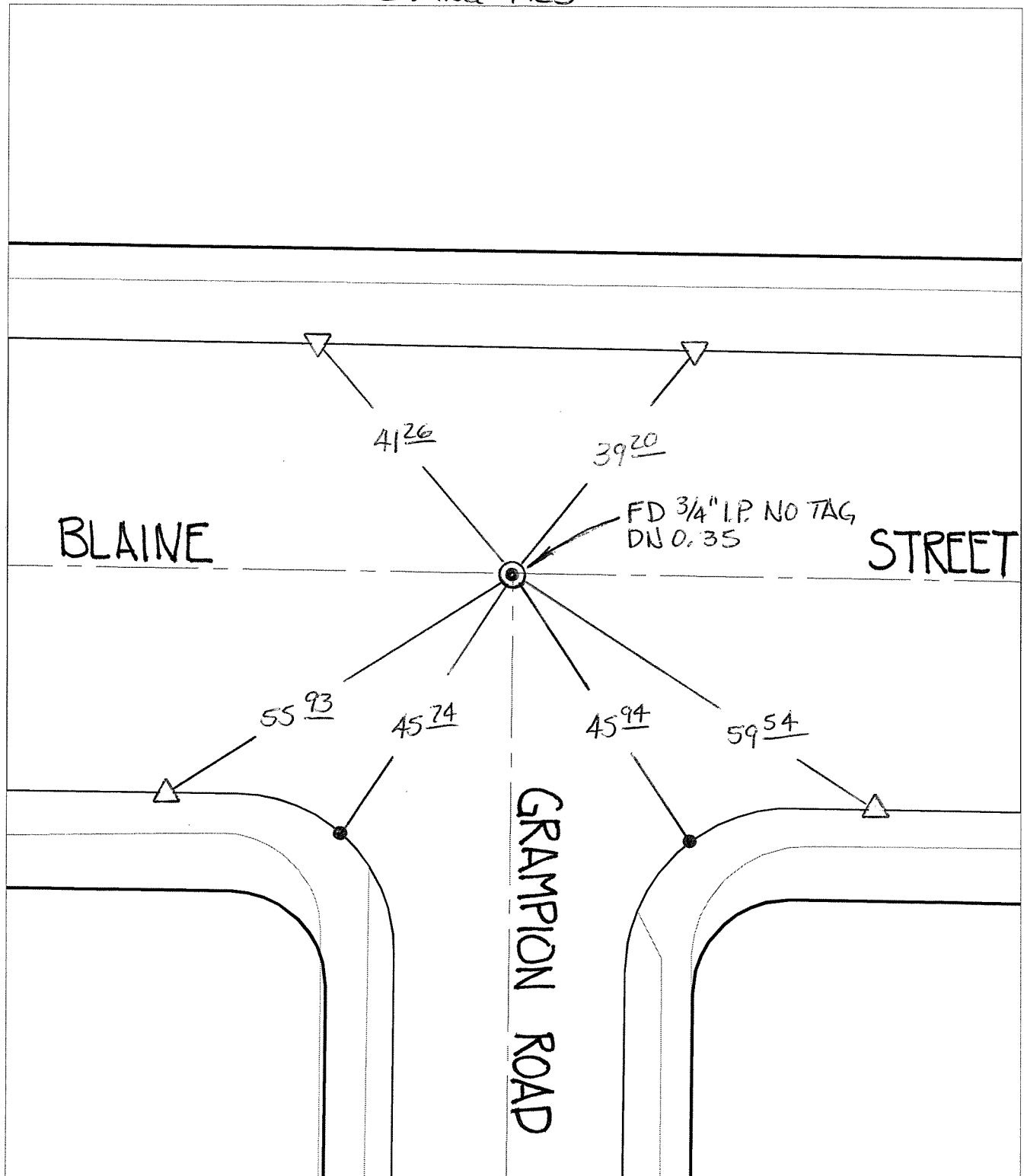


14196.TIF

Street: BLAINE STREET
X-Street: GRAMPION ROAD
OFFICIAL USE ONLY

SWING TIES




✕ FD. Ramset Nail on T/C ● FD. LD. & TK. on T/C P.K. and City Engineer tag to be set @
 ■ FD. "C" Nail on T/C ○ Set LD. & TK. on T/C surface after street construction is
 complete. (If possible)

Scale: 1" = 20'
 Date: 04/12/13
 Drawn by: pw
 F.B.:
 TR-Sec: T2SR4W-20

OFFICIAL TIE PLAT
CITY OF RIVERSIDE

*These ties are for the purpose of perpetuating the found
 monumentation. No claim is made as to the relationship of
 the points or lines shown hereon to true boundary locations.*



Sheet 1 of 1
 Cadme MB: 27-8