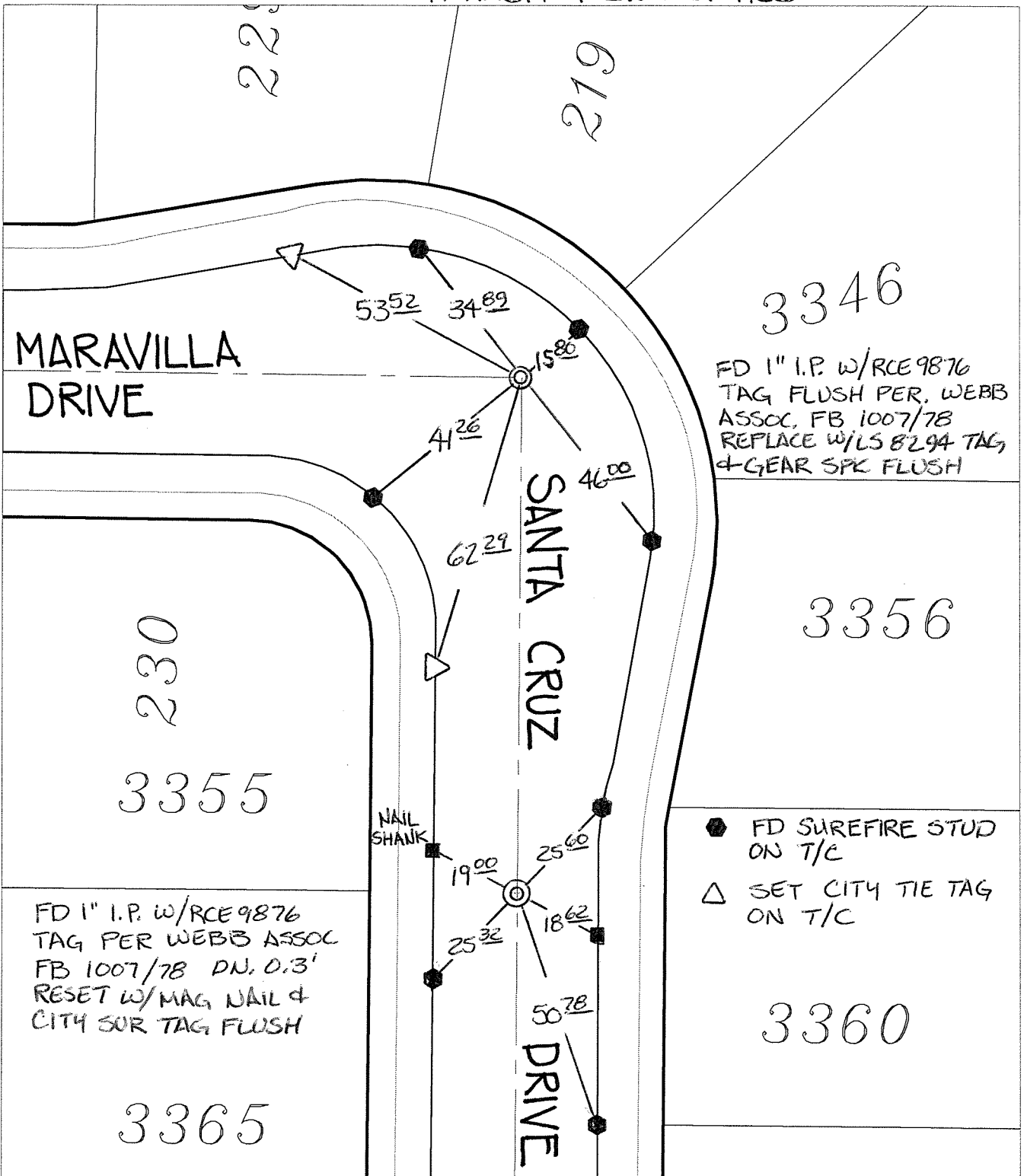


14202.T1F

Street: MARAVILLA DRIVE X-Street: SANTA CRUZ DRIVE  
OFFICIAL USE ONLY

TRANSIT + SWING TIES



FD 1" I.P. w/RCE 9876  
TAG FLUSH PER. WEBB  
ASSOC, FB 1007/78  
REPLACE W/LS 8294 TAG,  
4-GEAR SPK FLUSH

FD 1" I.P. w/RCE 9876  
TAG PER WEBB ASSOC  
FB 1007/78 DN. 0.3'  
RESET W/MAG NAIL &  
CITY SUR TAG FLUSH

- FD SUREFIRE STUD ON T/C
- △ SET CITY TIE TAG ON T/C

- × FD. Ramset Nail on T/C
- FD. LD. & TK. on T/C
- FD. "C" Nail on T/C
- Set LD. & TK. on T/C

P.K. and City Engineer tag to be set @ surface after street construction is complete. (If possible)

Scale: 1" = 30'  
 Date: 04/18/13  
 Drawn by: pw  
 F.B.:  
 TR-Sec: T2SR4W-20

## OFFICIAL TIE PLAT

### CITY OF RIVERSIDE

*These ties are for the purpose of perpetuating the found monumentation. No claim is made as to the relationship of the points or lines shown hereon to true boundary locations.*



Sheet 1 of 1  
 Cadme MB: 27-8