

14236.TIF

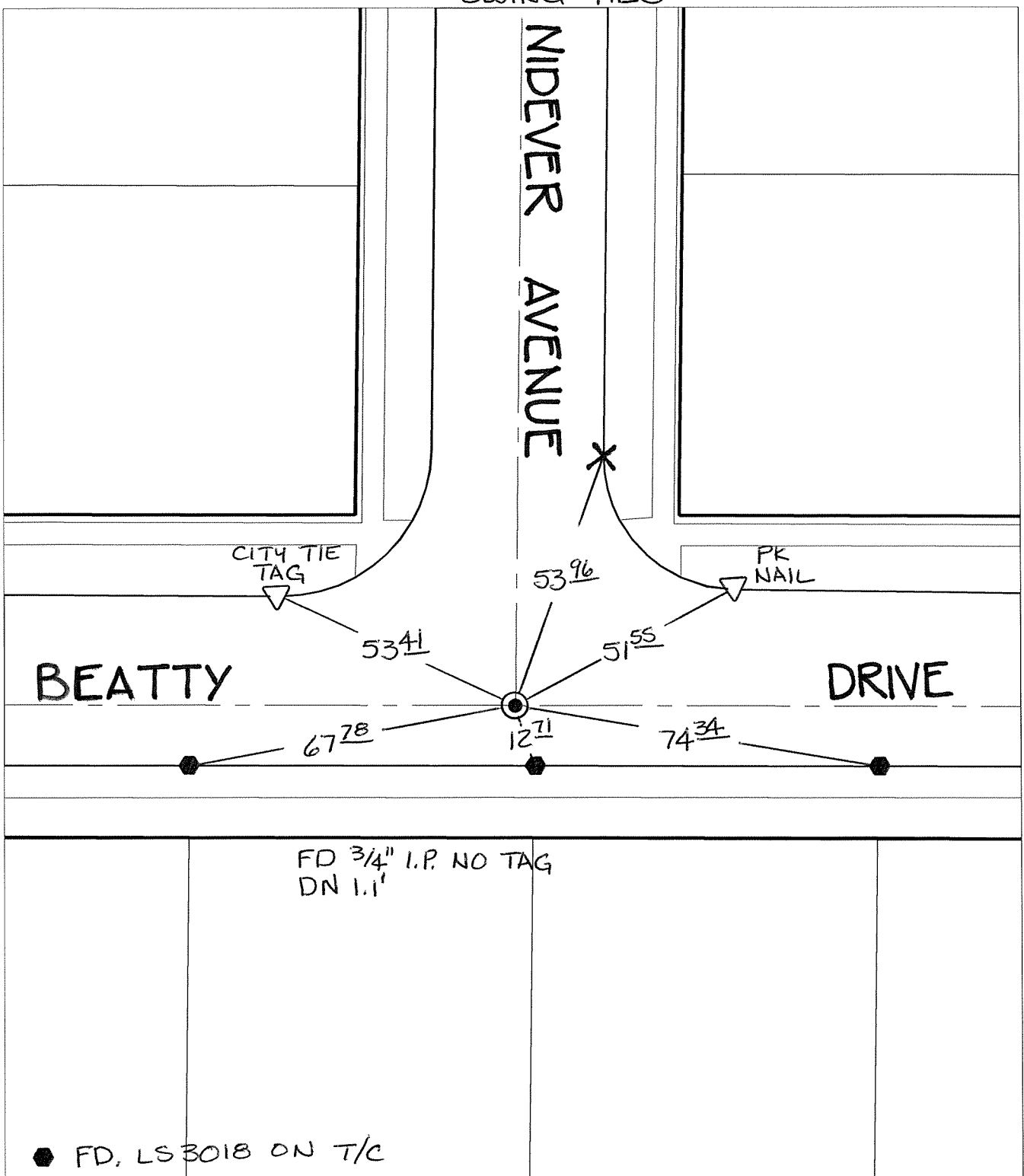
Street: BEATTY DRIVE
NIDEVER AVENUE
X-Street: NIDEVER AVENUE
OFFICIAL USE ONLY

SWING TIES

NIDEVER AVENUE

BEATTY

DRIVE



CITY TIE TAG

PK NAIL

53.41

53.96

51.55

67.78

12.71

74.34

FD 3/4" I.P. NO TAG
DN 1.1"

● FD, LS 3018 ON T/C

- ✕ FD. Ramset Nail on T/C
 - FD. LD. & TK. on T/C
 - FD. "C" Nail on T/C
 - Set LD. & TK. on T/C
- P.K. and City Engineer tag to be set @ surface after street construction is complete. (If possible)

Scale: 1" = 30'

Date: 05/20/14

Drawn by: pw

F.B.:

TR-Sec: T2SR5W-33

OFFICIAL TIE PLAT
CITY OF RIVERSIDE

These ties are for the purpose of perpetuating the found monumentation. No claim is made as to the relationship of the points or lines shown hereon to true boundary locations.

Sheet 1 of 1

Cadme MB: 52-2