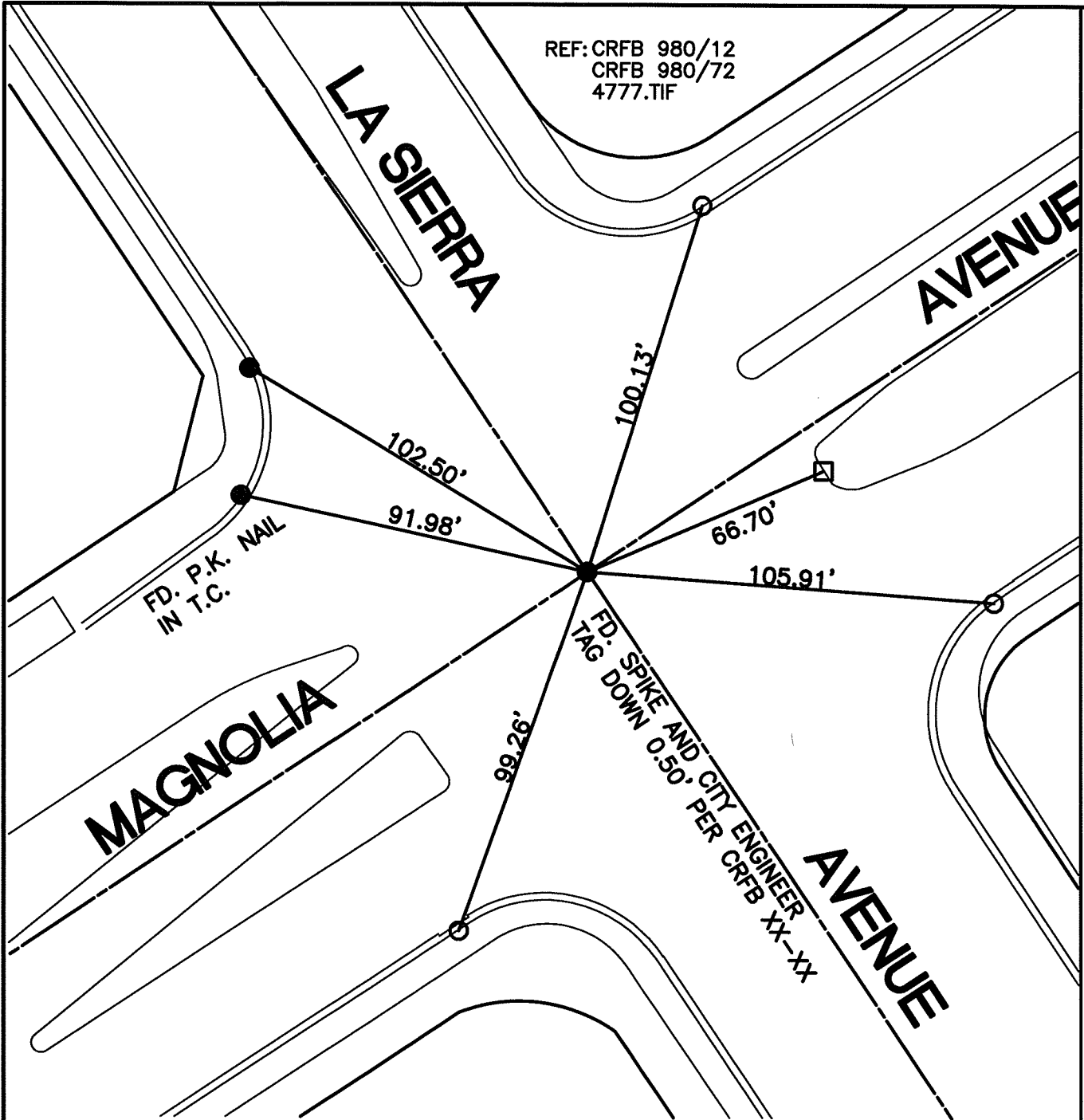


SWING TIES



14269.TIF

STREET: LA SIERRA AVENUE

OFFICIAL USE ONLY

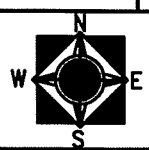
X-STREET: MAGNOLIA AVENUE

- - SET NAIL & CITY TIE TAG IN T.C.
- - FOUND LEAD & TACK IN T.C.
- - SET PK NAIL IN T.C.

SCALE: 1"=40'
 DATE: 10/23/13
 DRAWN BY: CURT
 F.B.:
 SEC: 14 T.3S.,R.6W

OFFICIAL TIE PLAT CITY OF RIVERSIDE

THESE TIES ARE FOR THE PURPOSE OF PERPETUATING THE FOUND MONUMENTATION. NO CLAIM IS MADE AS THE RELATIONSHIP OF THE POINTS OR LINES SHOWN HEREON TO TRUE BOUNDARY LOCATIONS



SHEET 1 OF 1