

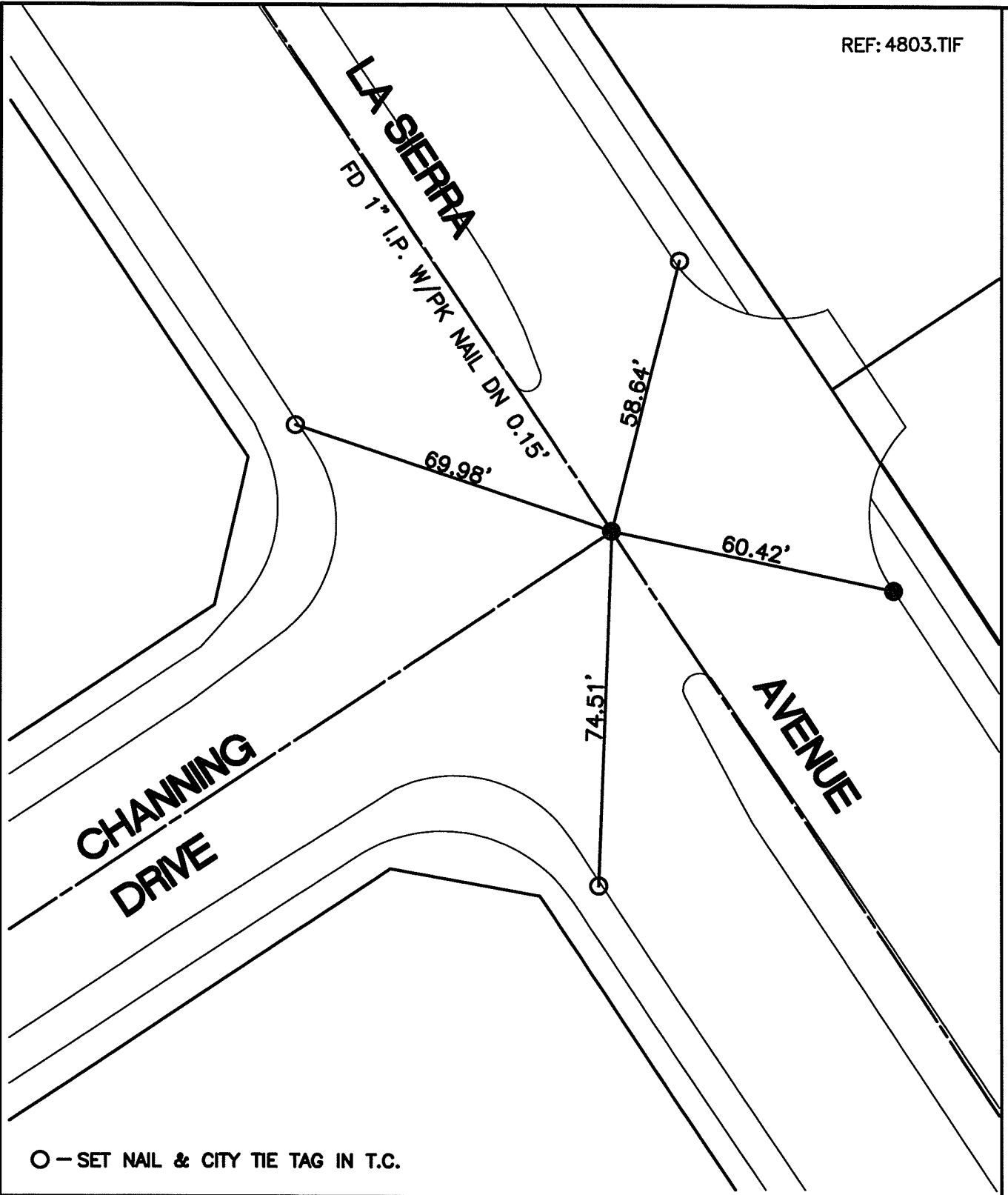
SWING TIES

REF: 4803.TIF

14270.TIF

STREET: LA SIERRA AVENUE

OFFICIAL USE ONLY
X-STREET: CHANNING DRIVE



○ - SET NAIL & CITY TIE TAG IN T.C.

SCALE: 1"=30'
 DATE: 10/23/13
 DRAWN BY: CURT
 F.B.:
 SEC: 14 T.3S.,R.6W

OFFICIAL TIE PLAT CITY OF RIVERSIDE

THESE TIES ARE FOR THE PURPOSE OF PERPETUATING THE FOUND MONUMENTATION. NO CLAIM IS MADE AS THE RELATIONSHIP OF THE POINTS OR LINES SHOWN HEREON TO TRUE BOUNDARY LOCATIONS



SHEET 1 OF 1