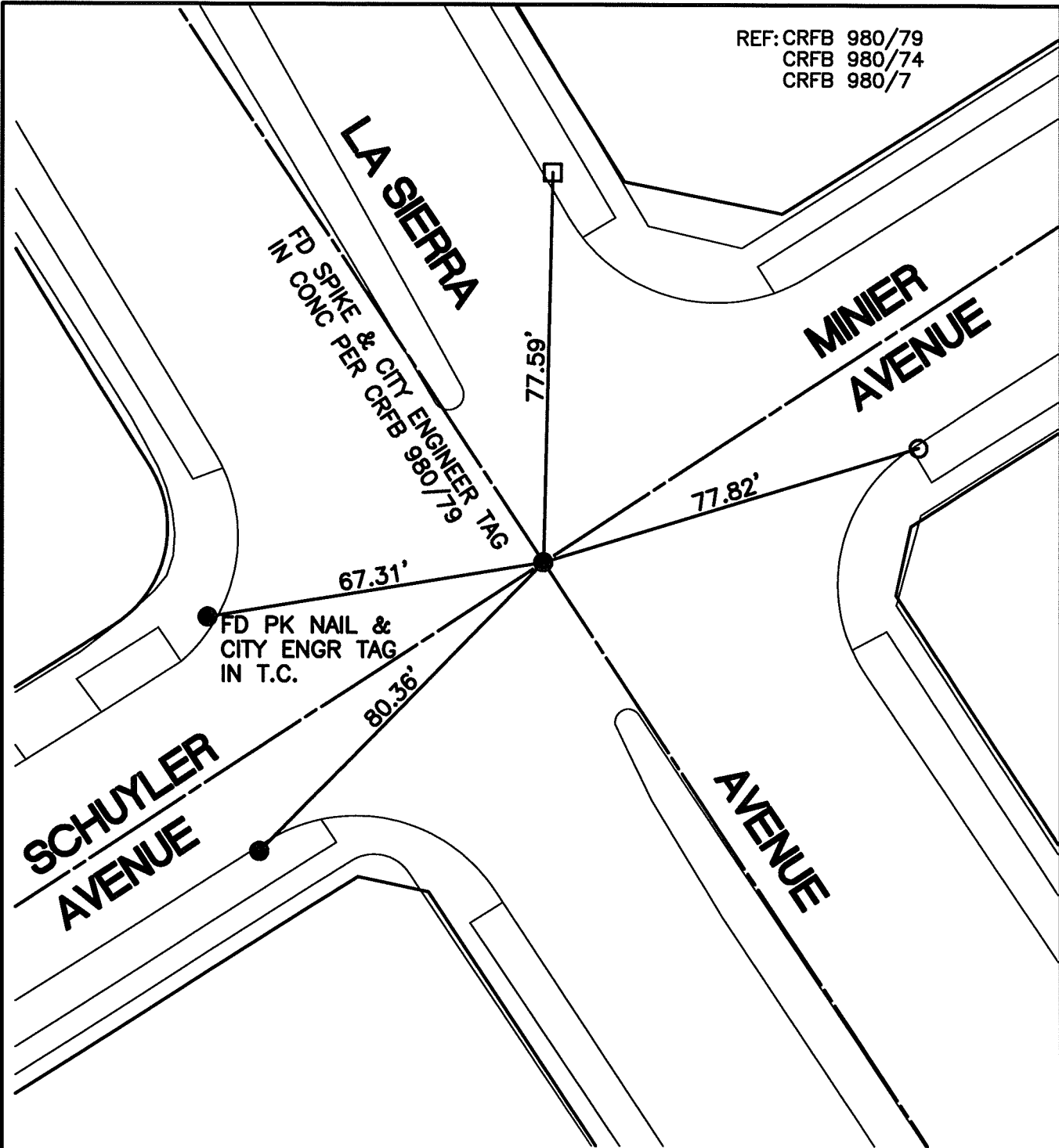


# SWING TIES

REF: CRFB 980/79  
 CRFB 980/74  
 CRFB 980/7



14275.TIF

STREET: LA SIERRA AVENUE

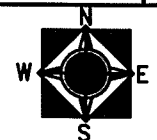
OFFICIAL USE ONLY  
 X-STREET: MINIER & SCHUYLER AVE

- - SET NAIL & CITY TIE TAG IN T.C.
- - FOUND LEAD & TACK IN T.C.
- - SET PK NAIL IN T.C.

SCALE: 1"=30'  
 DATE: 10/23/13  
 DRAWN BY: CURT  
 F.B.:  
 SEC: 14 T.3S.,R.6W

## OFFICIAL TIE PLAT CITY OF RIVERSIDE

THESE TIES ARE FOR THE PURPOSE OF PERPETUATING THE FOUND MONUMENTATION. NO CLAIM IS MADE AS THE RELATIONSHIP OF THE POINTS OR LINES SHOWN HEREON TO TRUE BOUNDARY LOCATIONS



SHEET 1 OF 1