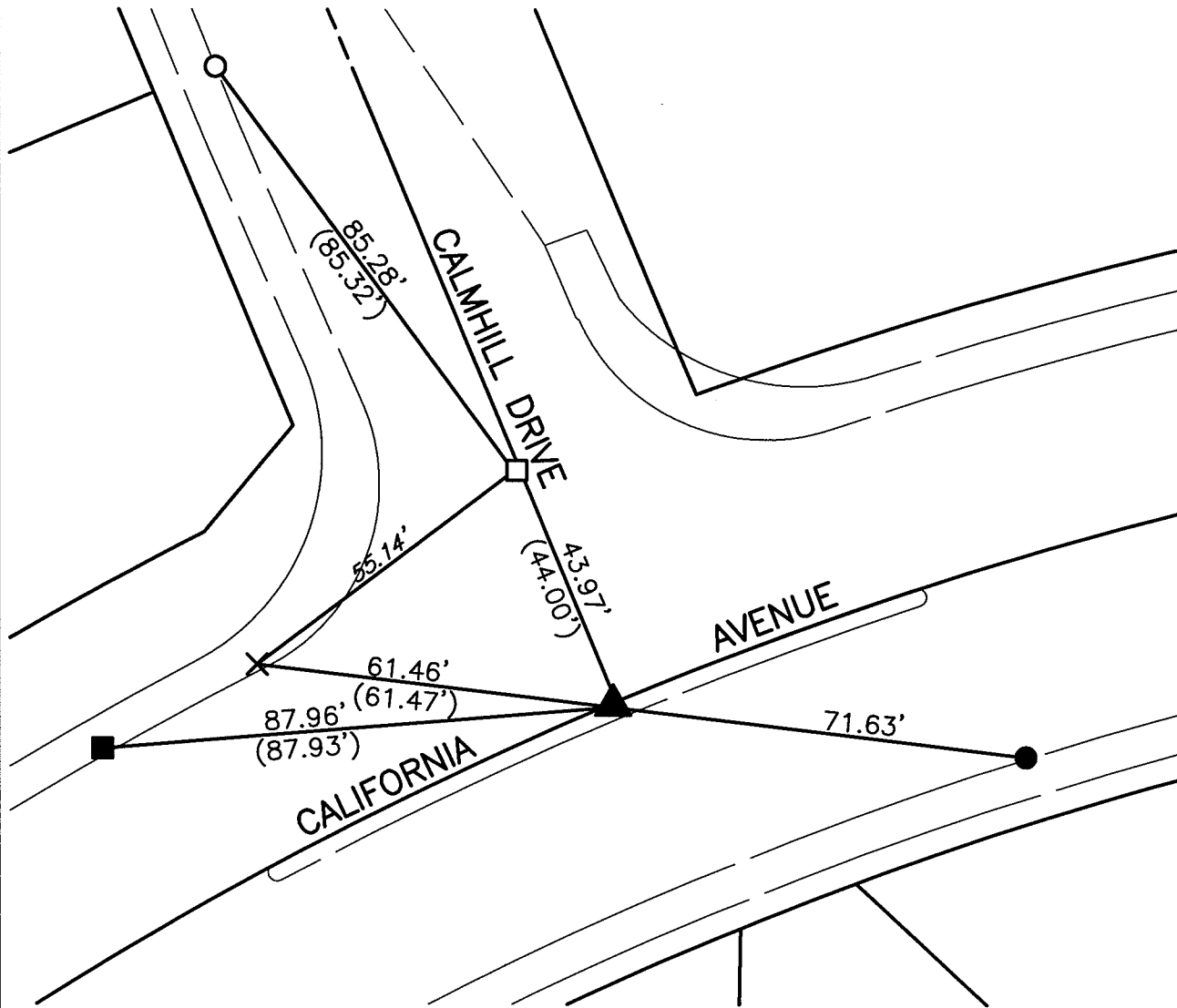


SWING TIES

REF: (XX.XX) INDICATES RECORD DISTANCE PER 1093.TIF




- - FD 1-1/4" O.D. IRON PIPE, EMPTY, FLUSH
- ▲ - FD PK NAIL AND WASHER STAMPED "RIVERSIDE CITY ENGINEER", FLUSH
- - FOUND LEAD & TACK IN T.C.
- - FOUND "C" NAIL "SHANK" IN T.C.
- - FD TACK AND TAG STAMPED "RCE 16056"
- × - FOUND RAMSET STUD IN T.C.

14279.TIF
 STREET: CALIFORNIA AVENUE
 X-STREET: CALMHILL DRIVE
 OFFICIAL USE ONLY

SCALE: 1"=30'
 DATE: 2/2/15
 DRAWN BY: JDF
 F.B.:
 SEC: 12 T.3S., R.6W

OFFICIAL TIE PLAT
CITY OF RIVERSIDE

THESE TIES ARE FOR THE PURPOSE OF PERPETUATING THE FOUND MONUMENTATION. NO CLAIM IS MADE AS THE RELATIONSHIP OF THE POINTS OR LINES SHOWN HEREON TO TRUE BOUNDARY LOCATIONS



SHEET 1 OF 1