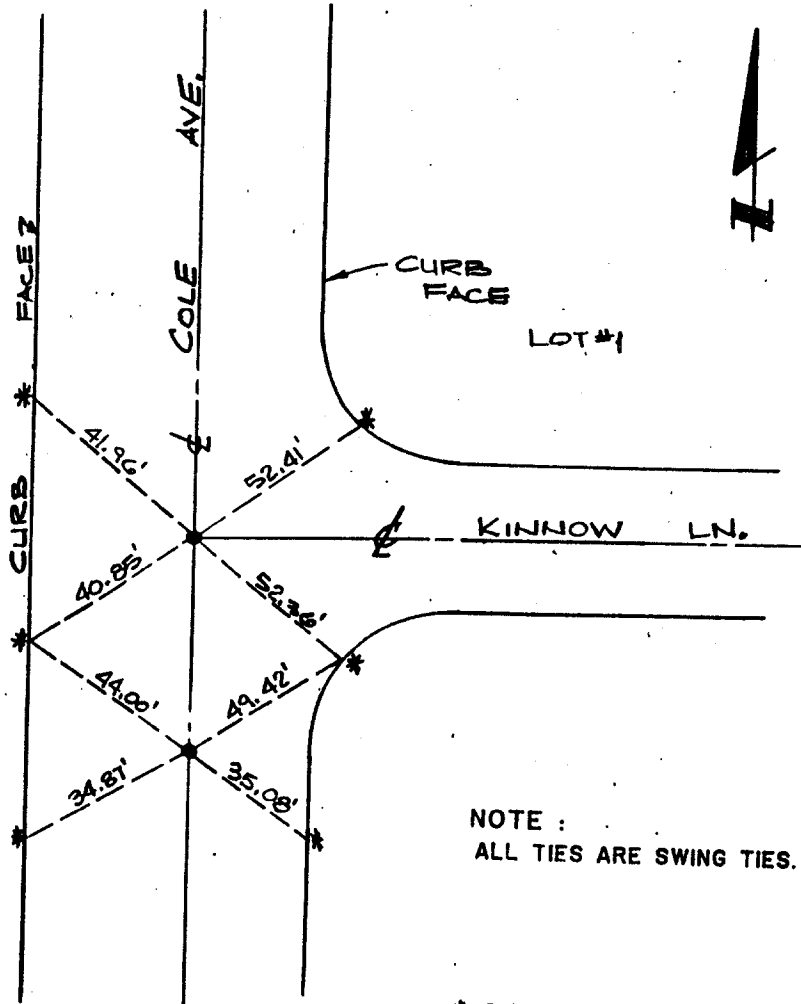


1428.717

Sheet 1 of 13



NOTE :
ALL TIES ARE SWING TIES.

- * SET RAMSET NAIL IN CURB
- SET 1" IRON PIPE, TAGGED LS 5306

TRACT NO. 19958-1
CENTERLINE TIES

SOUTHLAND ENGINEERING
2501 RUBIDOUX BLVD. SUITE B
RIVERSIDE, CALIFORNIA, 92509
PH. (714) 788-8488

Scale: N.T.S. Date: OCT. 1988

COLE AVE. @ Kinnow Ln

Street: COLE AVE
X-Street: KINNOW LN.
OFFICIAL USE ONLY

- × FD. Ramset Nail on T/C
- FD. LD. & TK. on T/C
- FD. "C" Nail on T/C
- Set LD. & TK. on T/C

Scale:
Date:
Drawn by:
W.O.:
F.B.:

OFFICIAL TIE PLAT CITY OF RIVERSIDE

These ties are for the purpose of perpetuating the found monumentation. No claim is made as to the relationship of the points or lines shown hereon to true boundary locations.

Sheet 1 of 1
File No.: