

SWING TIES

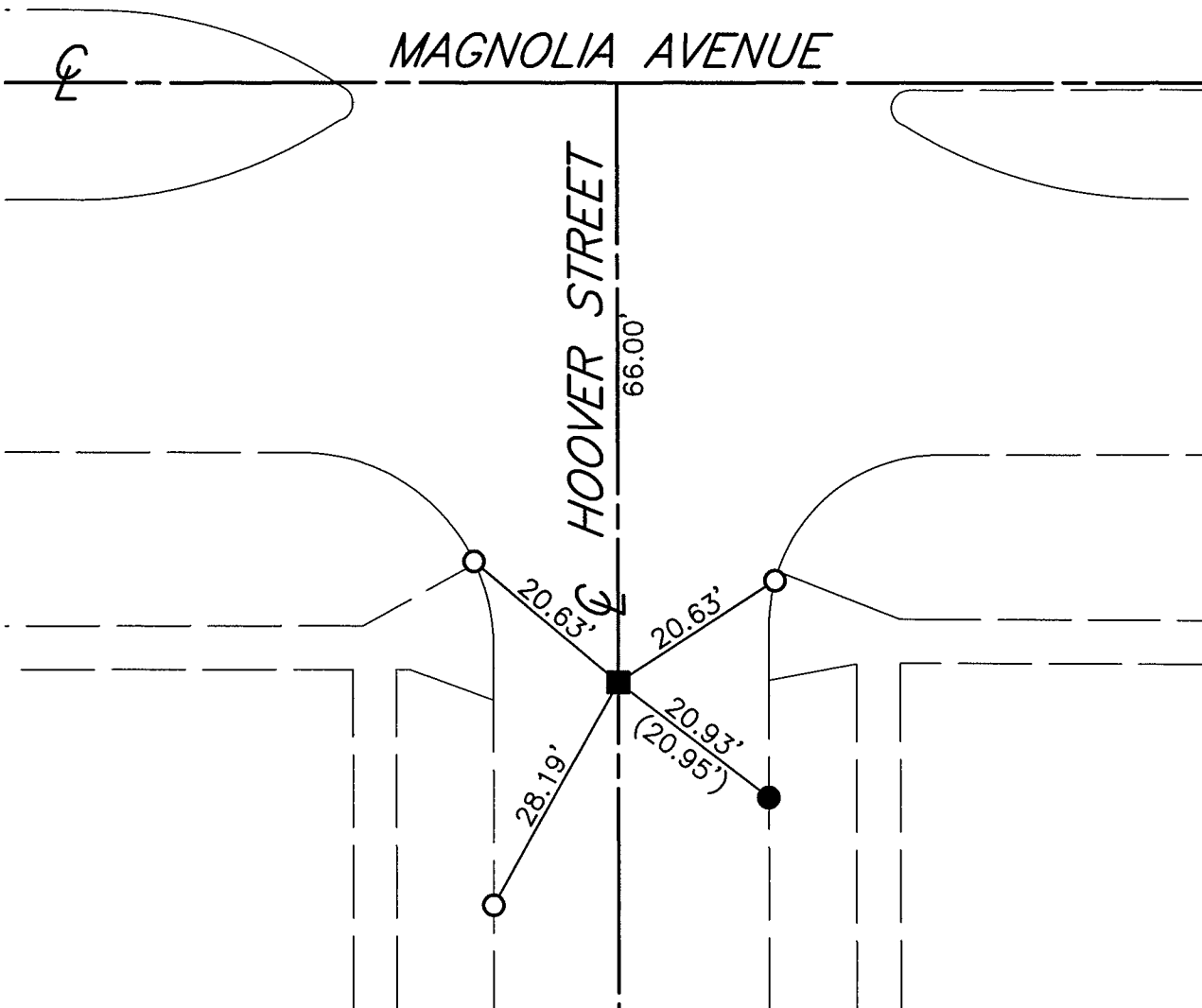
REF: (XX.XX) INDICATES RECORD DISTANCE PER 5540.TIF
 FB 615/33

14285.TIF

STREET: MAGNOLIA AVENUE

OFFICIAL USE ONLY

X-STREET: HOOVER STREET



- - SET NAIL & CITY TIE TAG IN T.C.
- - FOUND LEAD & TACK IN T.C.
- - FOUND 1-1/4" I.P. DOWN 0.3'

SCALE:	1"=20'
DATE:	4/9/15
DRAWN BY:	JDF
F.B.:	
SEC: T.3S., R.5W SEC. 4	

OFFICIAL TIE PLAT CITY OF RIVERSIDE

THESE TIES ARE FOR THE PURPOSE OF PERPETUATING THE FOUND MONUMENTATION. NO CLAIM IS MADE AS THE RELATIONSHIP OF THE POINTS OR LINES SHOWN HEREON TO TRUE BOUNDARY LOCATIONS

