

# SWING TIES

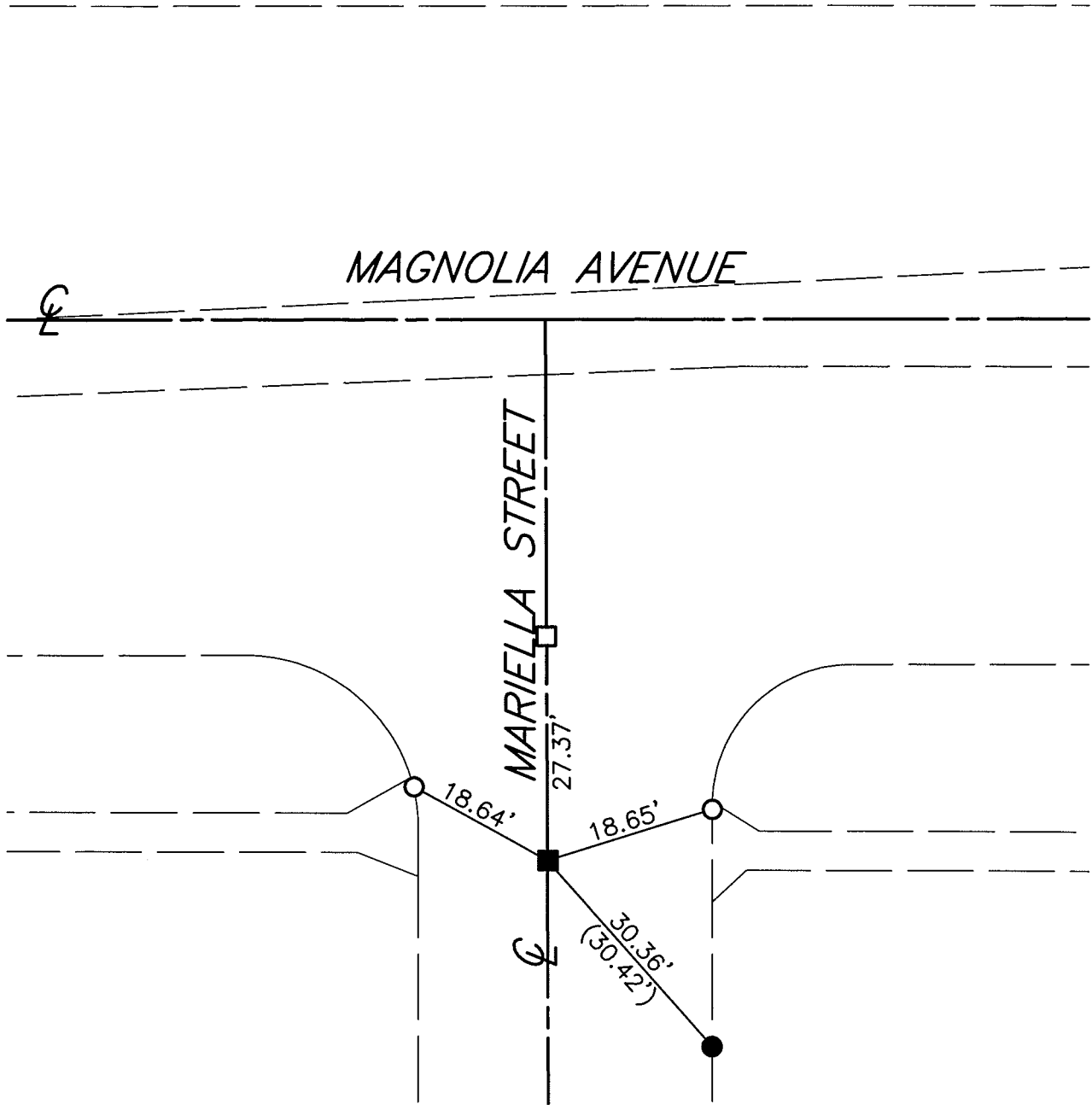
REF: (XX.XX) INDICATES RECORD DISTANCE PER 5152.TIF

14286.TIF

STREET: MAGNOLIA AVENUE

OFFICIAL USE ONLY

X-STREET: MARIELLA STREET



- - SET MAG NAIL IN GUTTER
- - SET NAIL & CITY TIE TAG IN T.C.
- - FOUND LEAD & TACK IN T.C.
- - FOUND PK NAIL AND WASHER STAMPED "RIVERSIDE CITY ENGINEER"

SCALE:	1"=20'
DATE:	4/9/15
DRAWN BY:	JDF
F.B.:	
SEC:	T.3S., R.5W SEC. 4

## OFFICIAL TIE PLAT CITY OF RIVERSIDE

THESE TIES ARE FOR THE PURPOSE OF PERPETUATING THE FOUND MONUMENTATION. NO CLAIM IS MADE AS THE RELATIONSHIP OF THE POINTS OR LINES SHOWN HEREON TO TRUE BOUNDARY LOCATIONS

