

SWING TIES

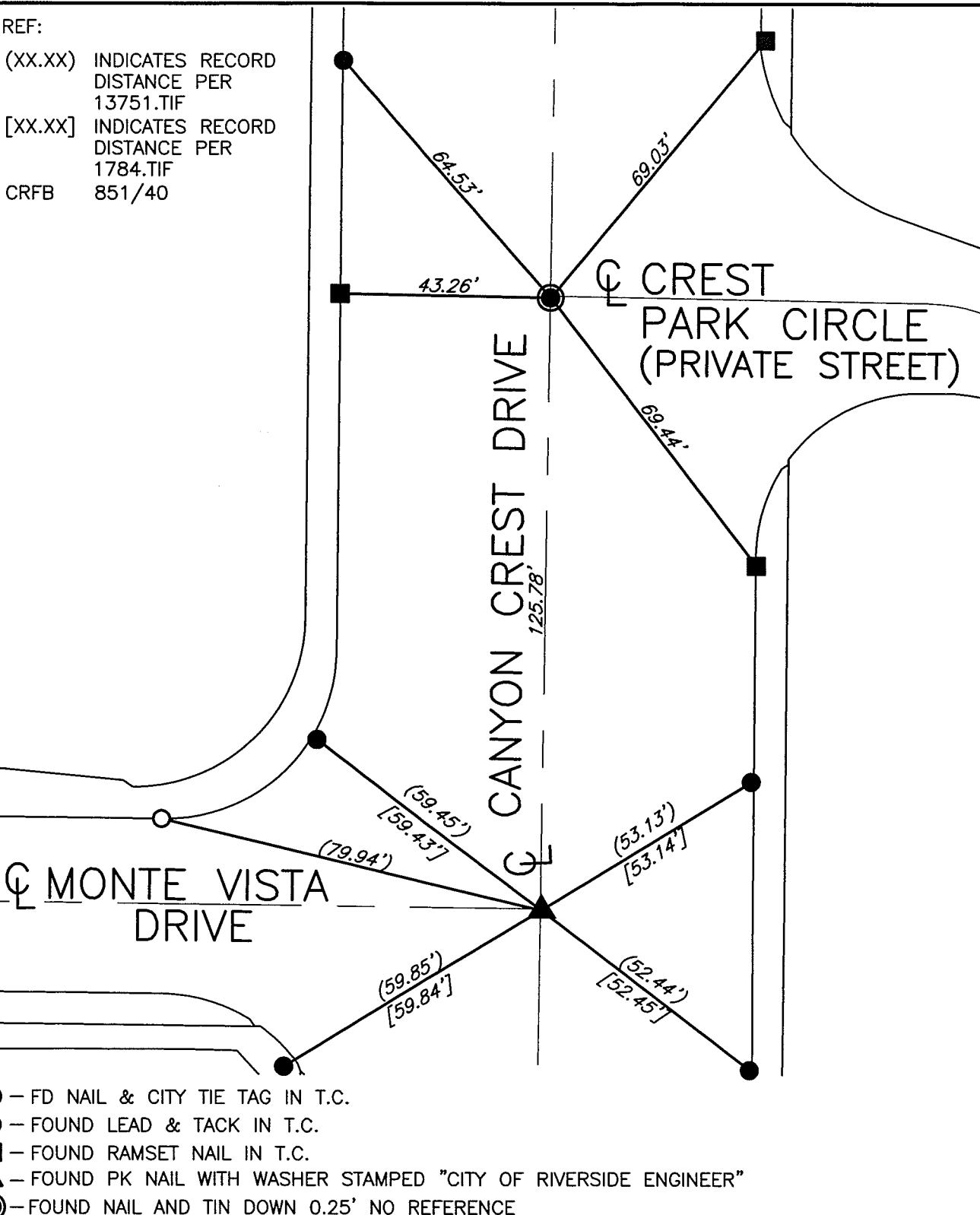
14287.TIF

REF:

(XX.XX) INDICATES RECORD DISTANCE PER 13751.TIF

[XX.XX] INDICATES RECORD DISTANCE PER 1784.TIF

CRFB 851/40



STREET: CANYON CREST DRIVE

OFFICIAL USE ONLY

X-STREET: CREST PARK CIRCLE N'LY AND MONTE VISTA DRIVE

- - FD NAIL & CITY TIE TAG IN T.C.
- - FOUND LEAD & TACK IN T.C.
- - FOUND RAMSET NAIL IN T.C.
- ▲ - FOUND PK NAIL WITH WASHER STAMPED "CITY OF RIVERSIDE ENGINEER"
- - FOUND NAIL AND TIN DOWN 0.25' NO REFERENCE

SCALE: 1"=30'

DATE: 4/1/15

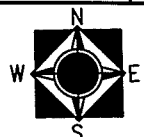
DRAWN BY: JDF

F.B.:

SEC: 31/32 T.2S., R.4W

OFFICIAL TIE PLAT CITY OF RIVERSIDE

THESE TIES ARE FOR THE PURPOSE OF PERPETUATING THE FOUND MONUMENTATION. NO CLAIM IS MADE AS THE RELATIONSHIP OF THE POINTS OR LINES SHOWN HEREON TO TRUE BOUNDARY LOCATIONS



SHEET 1 OF 1