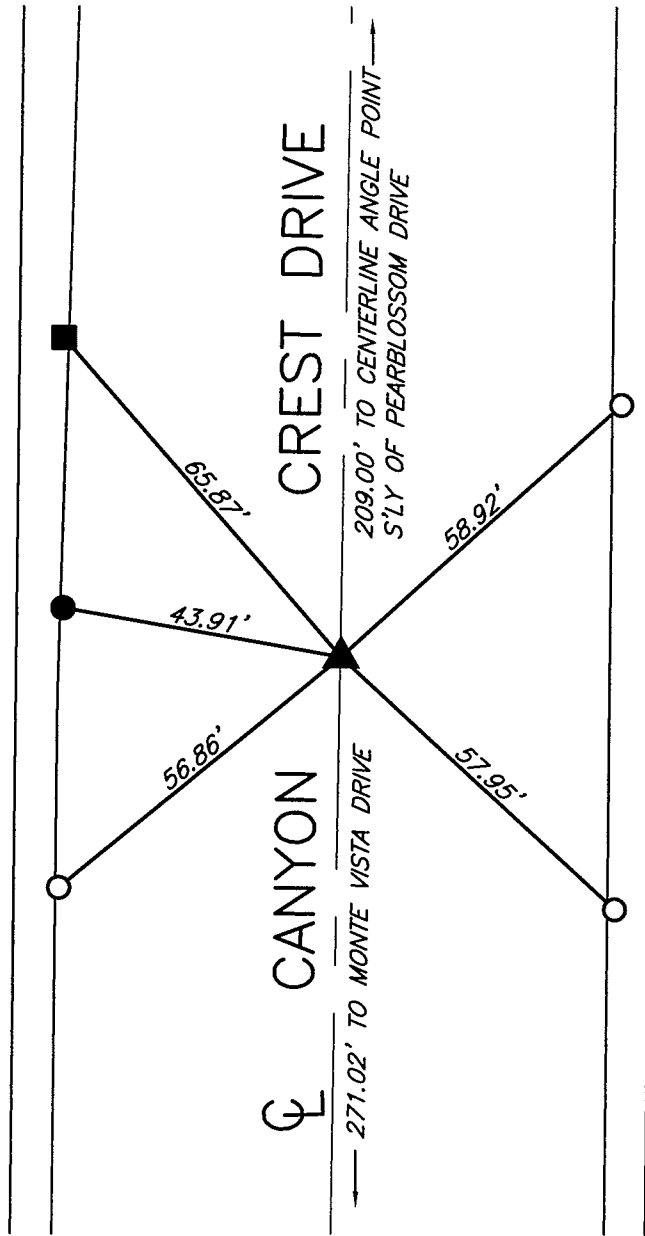


# SWING TIES

REF:  
NO REFERENCES



14288.T1E  
STREET: CANYON CREST DRIVE  
X-STREET: .  
OFFICIAL USE ONLY

- - SET NAIL AND CITY TIE TAG IN T.C.
- - FOUND LEAD & TACK IN T.C.
- - FOUND P.K. NAIL IN T.C. - B.M. H8K3
- ▲ - FOUND 1-1/2" BRASS DISC STAMPED "UCR LS 4430"

SCALE: 1"=30'  
DATE: 4/1/15  
DRAWN BY: JDF  
F.B.:  
SEC: 31/32 T.2S., R.4W

## OFFICIAL TIE PLAT CITY OF RIVERSIDE

THESE TIES ARE FOR THE PURPOSE OF PERPETUATING THE FOUND MONUMENTATION. NO CLAIM IS MADE AS THE RELATIONSHIP OF THE POINTS OR LINES SHOWN HEREON TO TRUE BOUNDARY LOCATIONS



SHEET 1 OF 1