

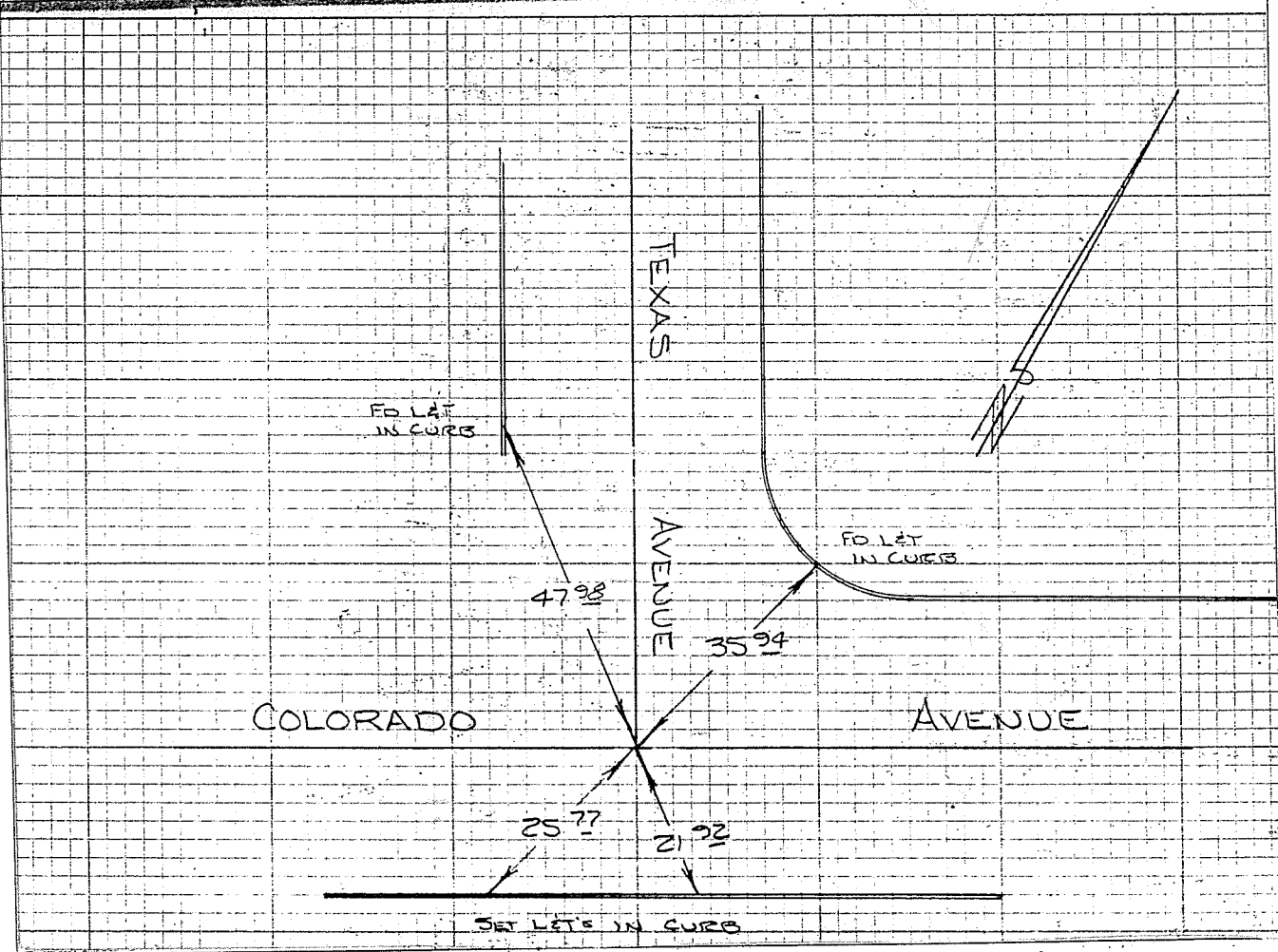
14311.TIF

Street: COLORADO AVE.

X-Street: TEXAS AVE.

OFFICIAL USE ONLY

HISTORICAL DATA FB. U.2/34	TRANSIT TIES	CREW STEELE MORGAN JORDAN  5-12-68 FB 855/14
-------------------------------	--------------	--



- ✕ FD. Ramset Nail on T/C
- FD. LD. & TK. on T/C
- FD. "C" Nail on T/C
- Set LD. & TK. on T/C

Scale:  
 Date:  
 Drawn by:  
 W.O.:  
 F.B.:

## OFFICIAL TIE PLAT

### CITY OF RIVERSIDE

*These ties are for the purpose of perpetuating the found monumentation. No claim is made as to the relationship of the points or lines shown hereon to true boundary locations.*

Sheet 1 of 1  
 File No.: