

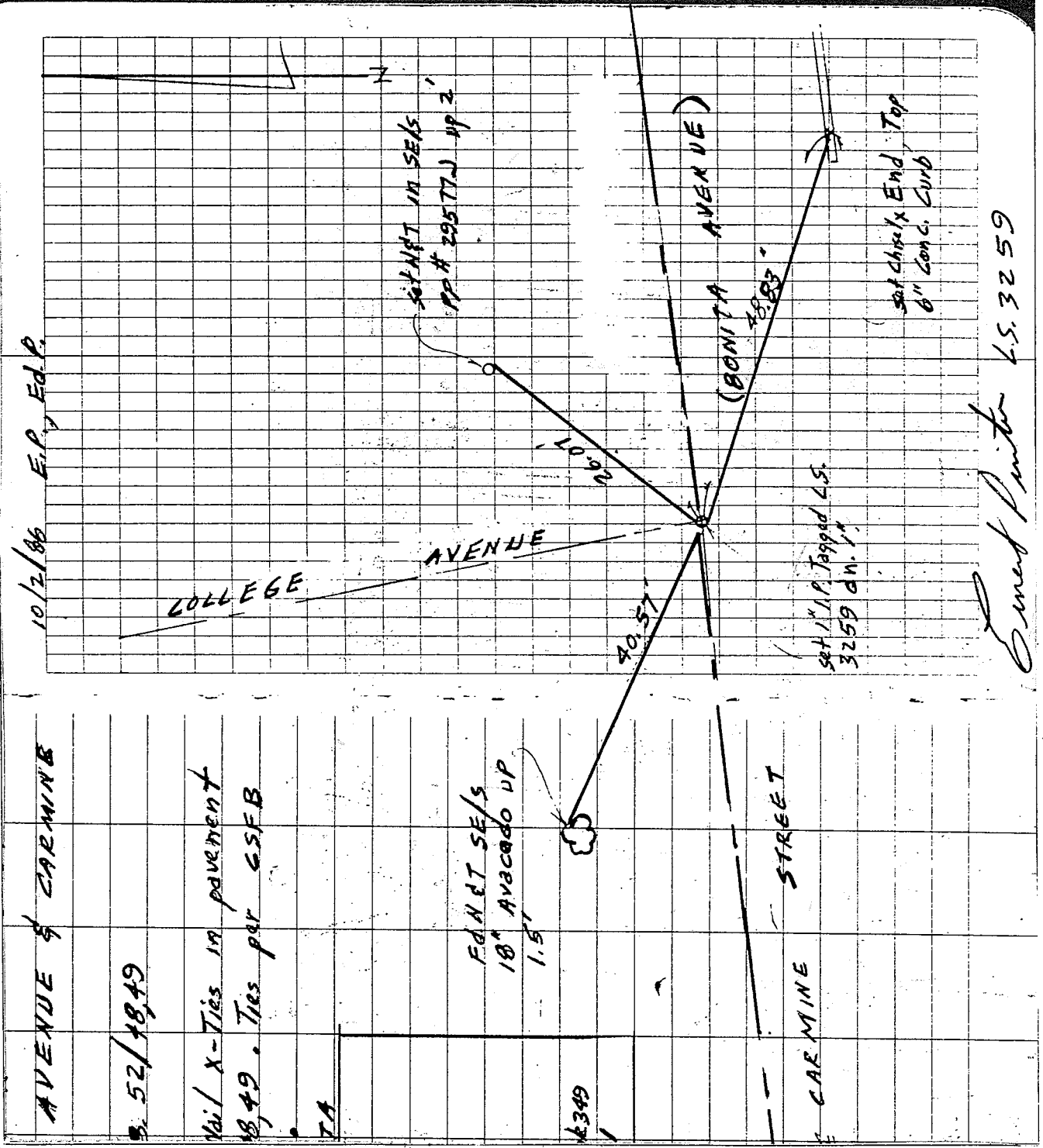
14314.TIF

Street: COLLEGE AVE.

X-Street: CARMINE ST.

OFFICIAL USE ONLY

CARMINE DR.



10/2/86 E.P. Ed.P.

SET IN SEALS
PP # 29577J UP 2

set chisel End Top
6" Conc. Club

652357
Ernest Pinter

set 1/4" P. Tagged 45.
3259 d.n. 1"

AVENUE & CARMINE

\$ 52/18,49

1/4" X-Ties in pavement
18,49 Ties per GSFB

FUND SE/S
18" AVACADO UP
1.5"

6349

STREET

CARMINE

- ✕ FD. Ramset Nail on T/C
- FD. "C" Nail on T/C

- FD. LD. & TK. on T/C
- Set LD. & TK. on T/C

Scale:
Date:
Drawn by:
W.O.:
F.B.:

OFFICIAL TIE PLAT
CITY OF RIVERSIDE

These ties are for the purpose of perpetuating the found monumentation. No claim is made as to the relationship of the points or lines shown hereon to true boundary locations.

Sheet 1 of 1
File No.: