

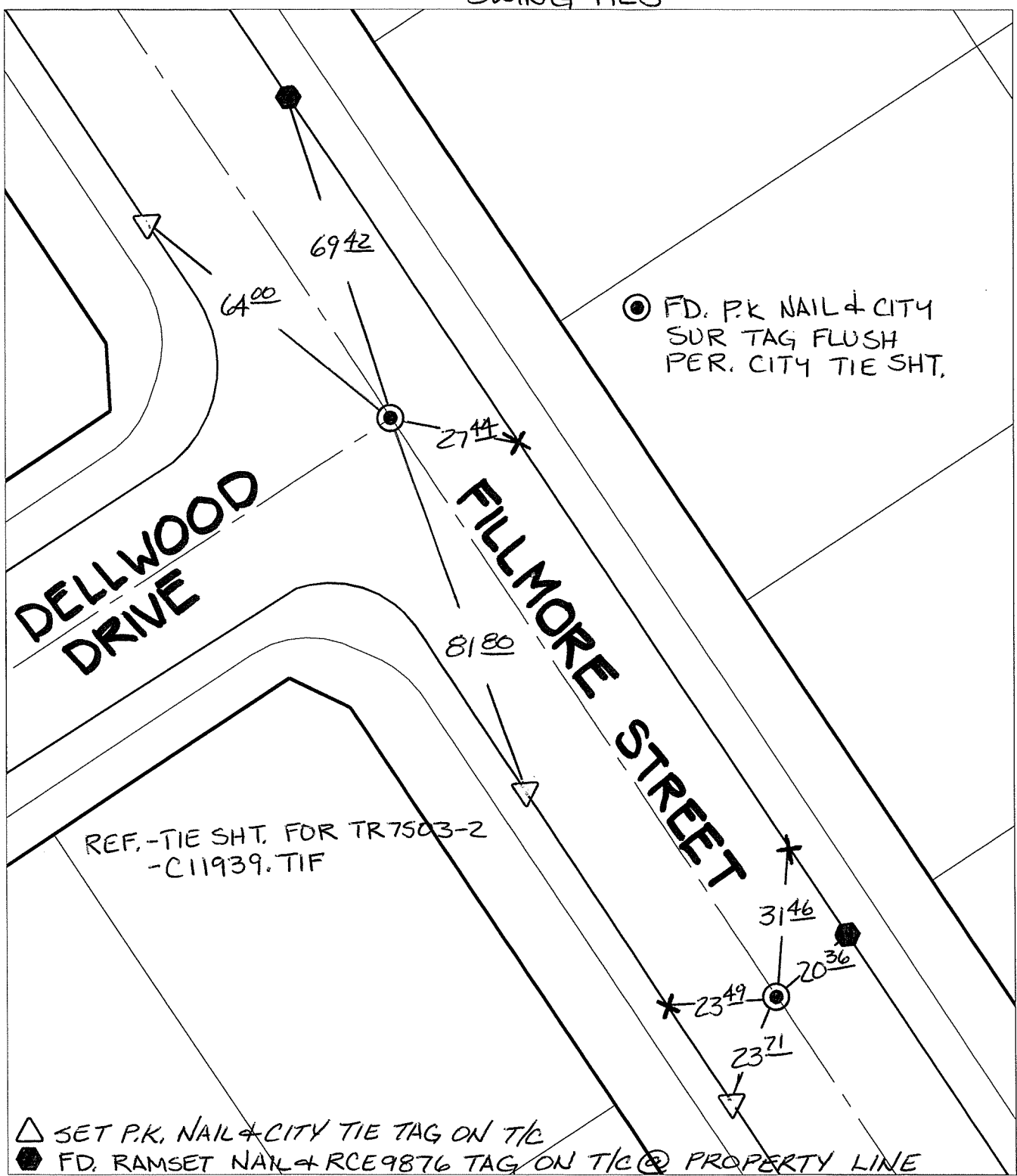
14318.T1F

Street: DELLWOOD DRIVE

X-Street: OFFICIAL USE ONLY

FILLMORE STREET

SWING TIES



⊙ FD. P.K NAIL & CITY SUR TAG FLUSH PER. CITY TIE SHT.

REF.-TIE SHT. FOR TR7503-2 -C11939.TIF

△ SET P.K. NAIL & CITY TIE TAG ON T/C
 ● FD. RAMSET NAIL & RCE9876 TAG ON T/C @ PROPERTY LINE


× FD. Ramset Nail on T/C ● FD. LD. & TK. on T/C
 ■ FD. "C" Nail on T/C ○ Set LD. & TK. on T/C

P.K. and City Engineer tag to be set @ surface after street construction is complete. (If possible)

Scale: 1" = 30'
 Date: 07/25/15
 Drawn by: pw
 F.B.:
 TR-Sec: T3SR6W-23

OFFICIAL TIE PLAT
CITY OF RIVERSIDE

These ties are for the purpose of perpetuating the found monumentation. No claim is made as to the relationship of the points or lines shown hereon to true boundary locations.



Sheet 1 of 1
 Cadme MB: 94-2