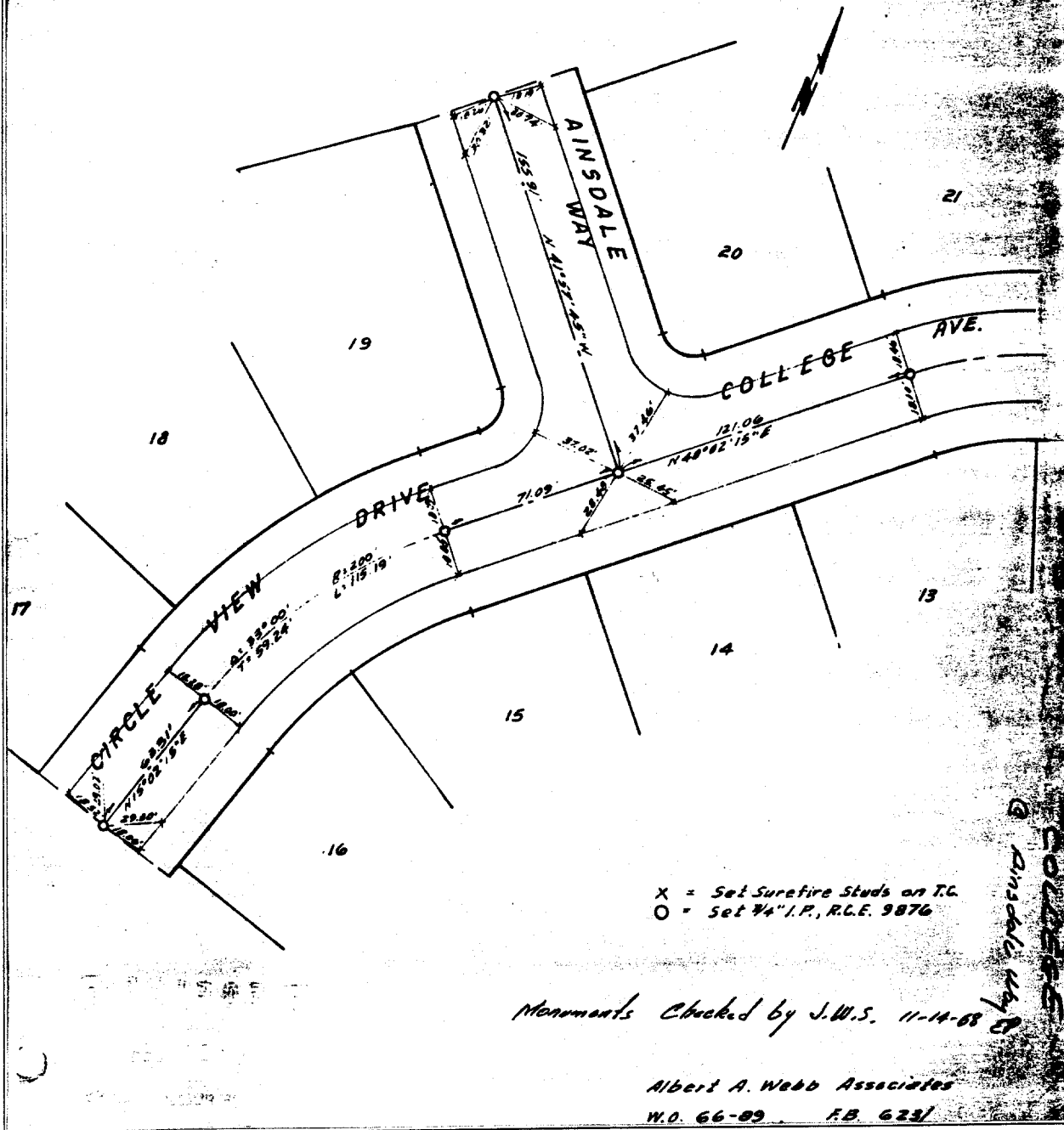


1432. 11A

TRACT No. 3761

Being a Subdivision of a portion of Sec. 9, T.35., R.6.W. of the Rancho La Sierra per map book 6, page 70 & a portion of lot 25 of Tract No. 2612 per map book 47/53-56 and a portion of lot C (Bargain Place) of Tract No. 2368 per M.B. 44/40-41 all Records of Riverside County, California.



X = Set Surefire Studs on T.C.
 O = Set 1/4" I.P., R.C.E. 9876

Monuments Checked by J.W.S. 11-14-68

Albert A. Webb Associates
 W.O. 66-89 F.B. 623/

- ✕ FD. Ramset Nail on T/C
- FD. LD. & TK. on T/C
- FD. "C" Nail on T/C
- Set LD. & TK. on T/C

Street: COLLEGE
 X-Street: ANSDALE WAY
 OFFICIAL USE ONLY

Scale:
 Date:
 Drawn by:
 W.O.:
 F.B.:

OFFICIAL TIE PLAT
CITY OF RIVERSIDE
 These ties are for the purpose of perpetuating the found monumentation. No claim is made as to the relationship of the points or lines shown hereon to true boundary locations.

Sheet 1 of 1
 File No.: