

14320.TIE

Street:

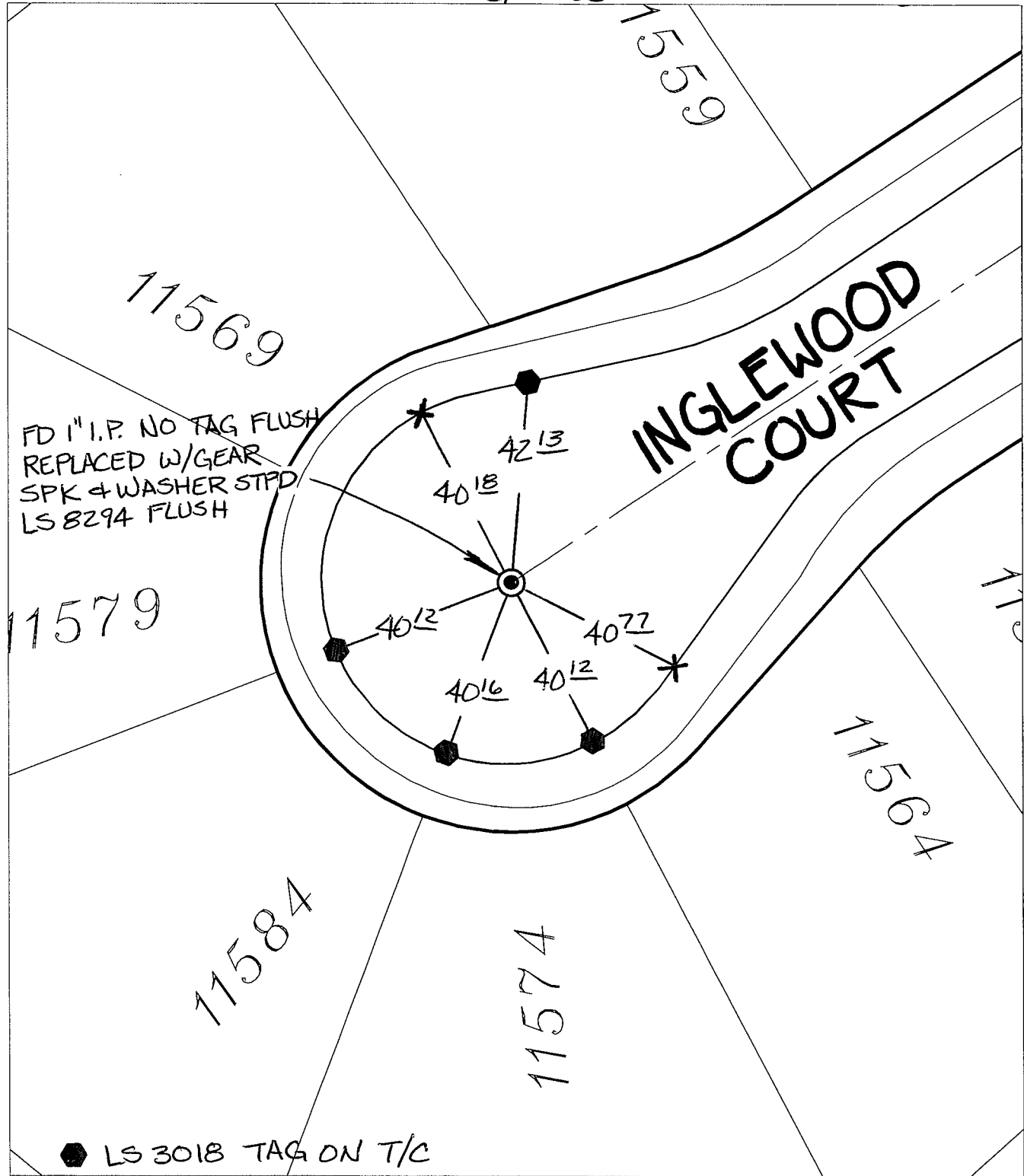
INGLEWOOD COURT

OFFICIAL USE ONLY

X-Street:

CUL-DE-SAC

SWING TIES



FD 1" I.P. NO TAG FLUSH  
REPLACED W/GEAR  
SPK & WASHER STPD  
LS 8294 FLUSH

● LS 3018 TAG ON T/C

- ✕ FD. Ramset Nail on T/C      ● FD. LD. & TK. on T/C
- FD. "C" Nail on T/C      ○ Set LD. & TK. on T/C

P.K. and City Engineer tag to be set @  
surface after street construction is  
complete. (If possible)

Scale: 1" = 30'  
 Date: 06/10/15  
 Drawn by: pw  
 F.B.:  
 TR-Sec: T3SR6W-23

## OFFICIAL TIE PLAT

### CITY OF RIVERSIDE

*These ties are for the purpose of perpetuating the found  
 monumentation. No claim is made as to the relationship of  
 the points or lines shown hereon to true boundary locations.*



Sheet 1 of 1  
 Cadme MB: 94-2