

14324.TIF

Street:

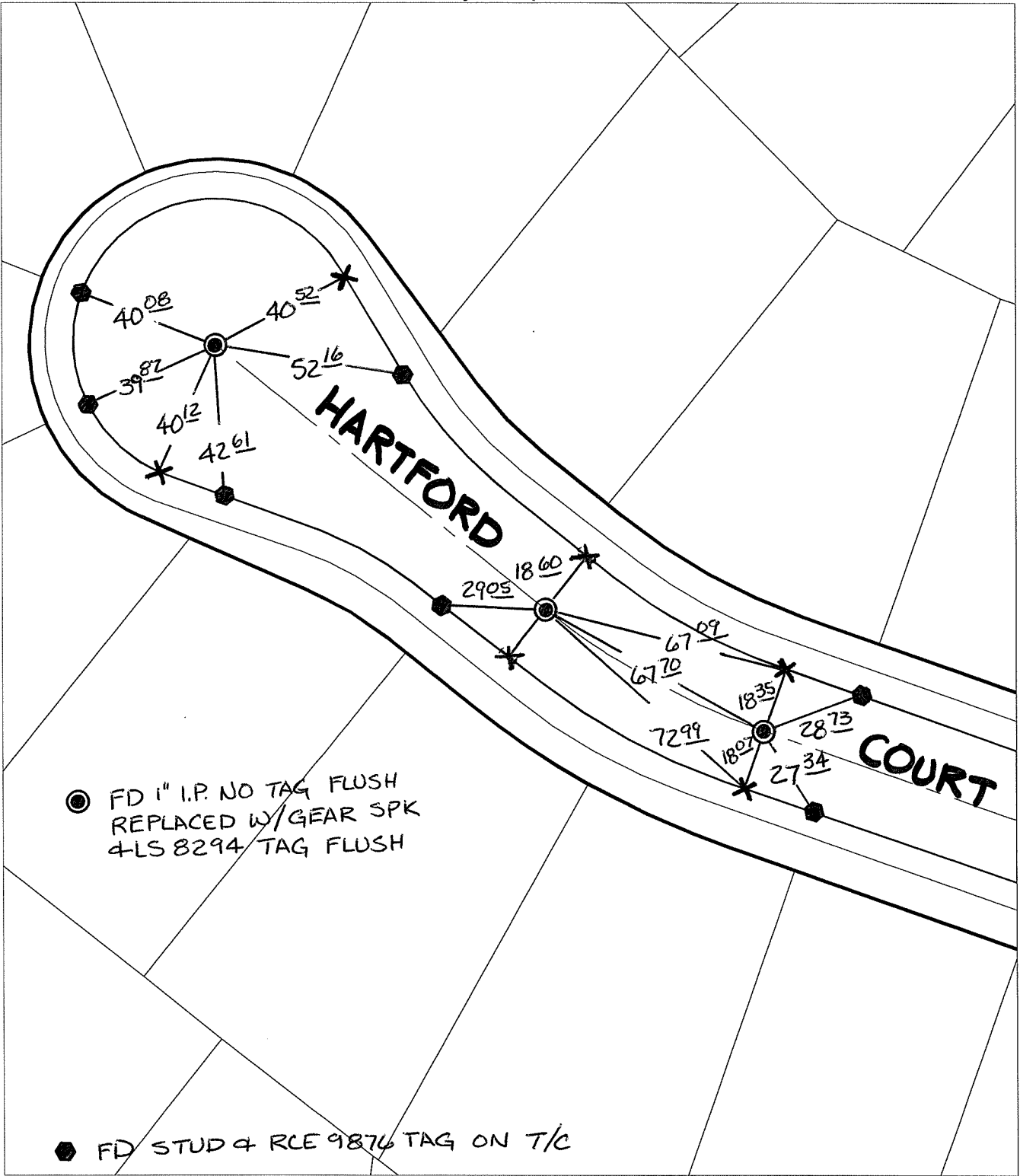
HARTFORD COURT

X-Street:

CUL-DE-SAC

OFFICIAL USE ONLY

SWING TIES



● FD 1" I.P. NO TAG FLUSH
 REPLACED W/GEAR SPK
 4LS 8294 TAG FLUSH

● FD STUD & RCE 9876 TAG ON T/C


- ✕ FD. Ramset Nail on T/C
- FD. LD. & TK. on T/C
- FD. "C" Nail on T/C
- Set LD. & TK. on T/C

P.K. and City Engineer tag to be set @
 surface after street construction is
 complete. (If possible)

Scale: 1" = 40'
 Date: 07/08/15
 Drawn by: pw
 F.B.:
 TR-Sec: T3SR6W-23

OFFICIAL TIE PLAT
CITY OF RIVERSIDE

*These ties are for the purpose of perpetuating the found
 monumentation. No claim is made as to the relationship of
 the points or lines shown hereon to true boundary locations.*



Sheet 1 of 1
 Cadme MB: 94-1