

14326.TIF

Street:

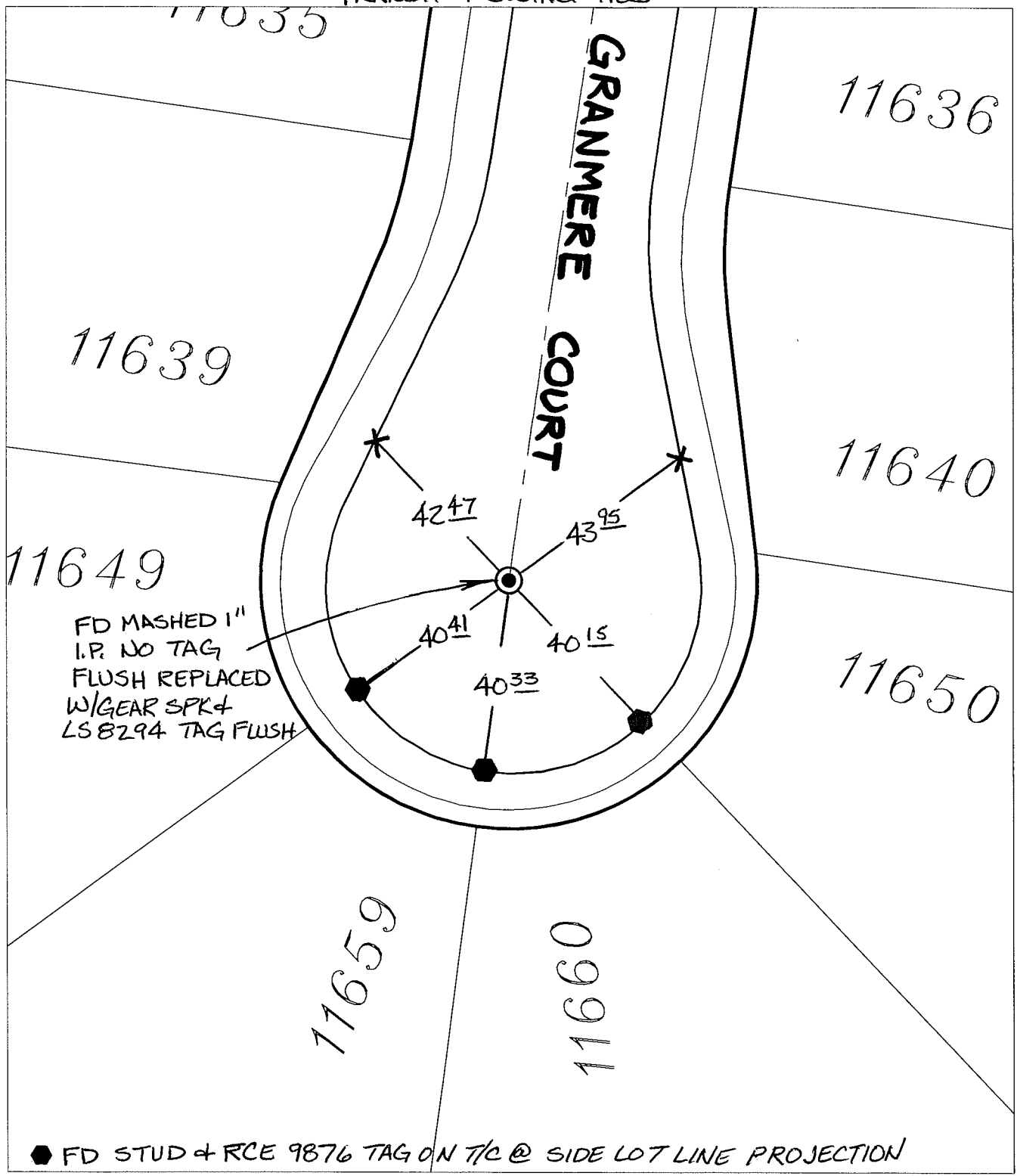
GRANMERE COURT

OFFICIAL USE ONLY

X-Street:

CUL-DE-SAC

TRANSIT & SWING TIES



- ✕ FD. Ramset Nail on T/C
- FD. LD. & TK. on T/C
- Set LD. & TK. on T/C
- FD. "C" Nail on T/C
- P.K. and City Engineer tag to be set @ surface after street construction is complete. (If possible)

Scale: 1" = 30'

Date: 07/09/15

Drawn by: pw

F.B.:

TR-Sec: T3SR6W-23

**OFFICIAL TIE PLAT**  
CITY OF RIVERSIDE

*These ties are for the purpose of perpetuating the found monumentation. No claim is made as to the relationship of the points or lines shown hereon to true boundary locations.*

Sheet 1 of 1

Cadme MB: 94-1