

14327.T1E

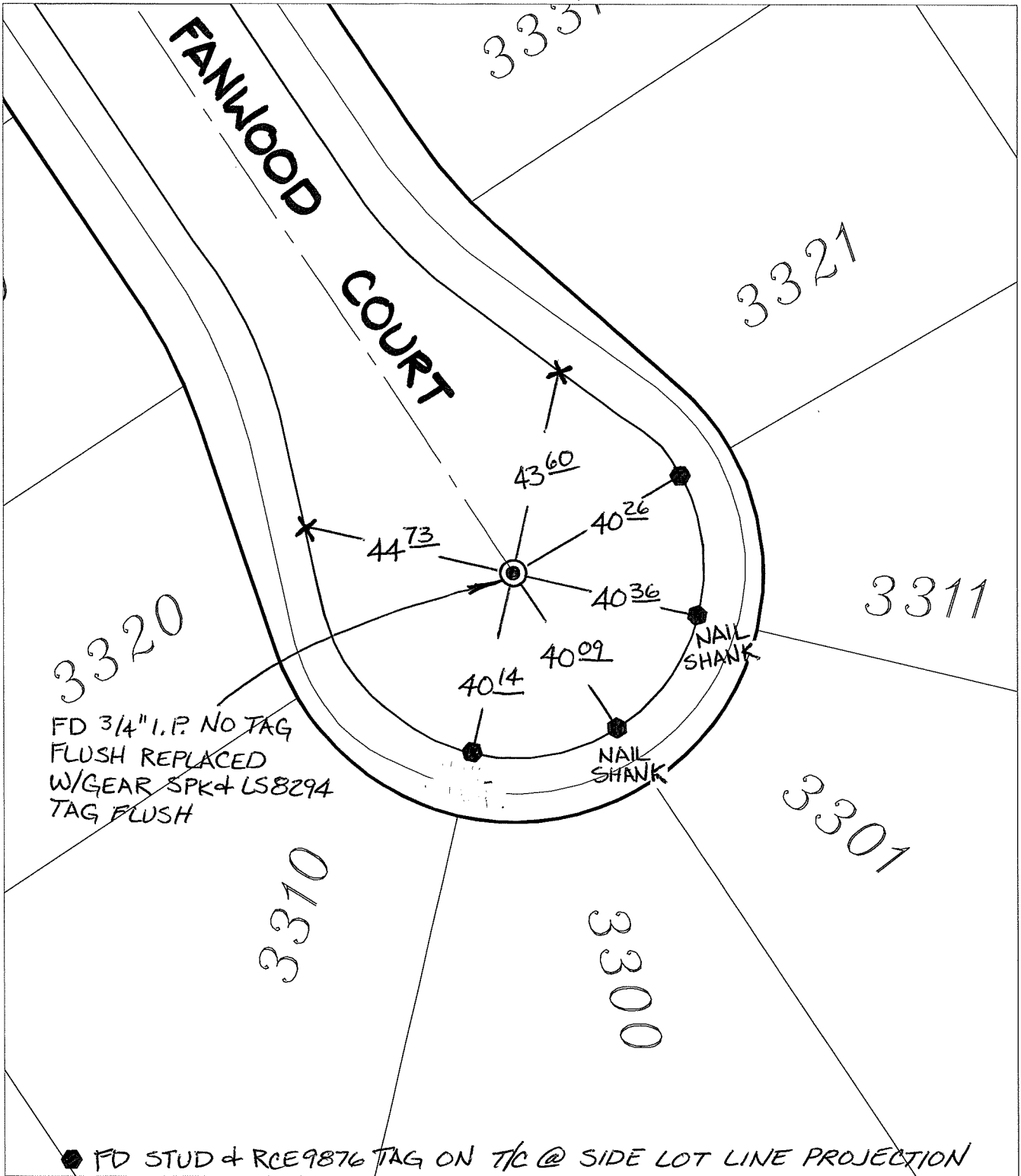
Street:

FANWOOD COURT

X-Street:
OFFICIAL USE ONLY

CUL-DE-SAC

TRANSIT & SWING TIES



FD 3/4" I.P. NO TAG
FLUSH REPLACED
W/GEAR SPK & LS8294
TAG FLUSH

● FD STUD & RCE9876 TAG ON T/C @ SIDE LOT LINE PROJECTION

- ✕ FD. Ramset Nail on T/C
- FD. LD. & TK. on T/C
- FD. "C" Nail on T/C
- Set LD. & TK. on T/C

P.K. and City Engineer tag to be set @ surface after street construction is complete. (If possible)

Scale: 1" = 30'

Date: 07/09/15

Drawn by: pw

F.B.:

TR-Sec: T3SR6W-23

OFFICIAL TIE PLAT

CITY OF RIVERSIDE

These ties are for the purpose of perpetuating the found monumentation. No claim is made as to the relationship of the points or lines shown hereon to true boundary locations.



Sheet 1 of 1

Cadme MB: 94-2